

GEF-7 Programming Directions Overview

Expanded Constituency Workshop

Saint Lucia – May 28, 2019

Milena Gonzalez Vasquez and Sarah Wyatt
Global Programs Unit (GPU)

The Global Environment Facility (GEF) is...

1- Financial Mechanism of the Environmental Multilateral Agreements

2- Global Partnership

183 countries

GEF Focal Point



18 Implementing Agencies



+ Private sector, Academic institutions...

3- Massive Track record of projects

- GEF created in **1991**
- **Over \$17.9 billion in grants + \$93.2 billion in co-financing**
- More than **4500 projects in 170 countries.**

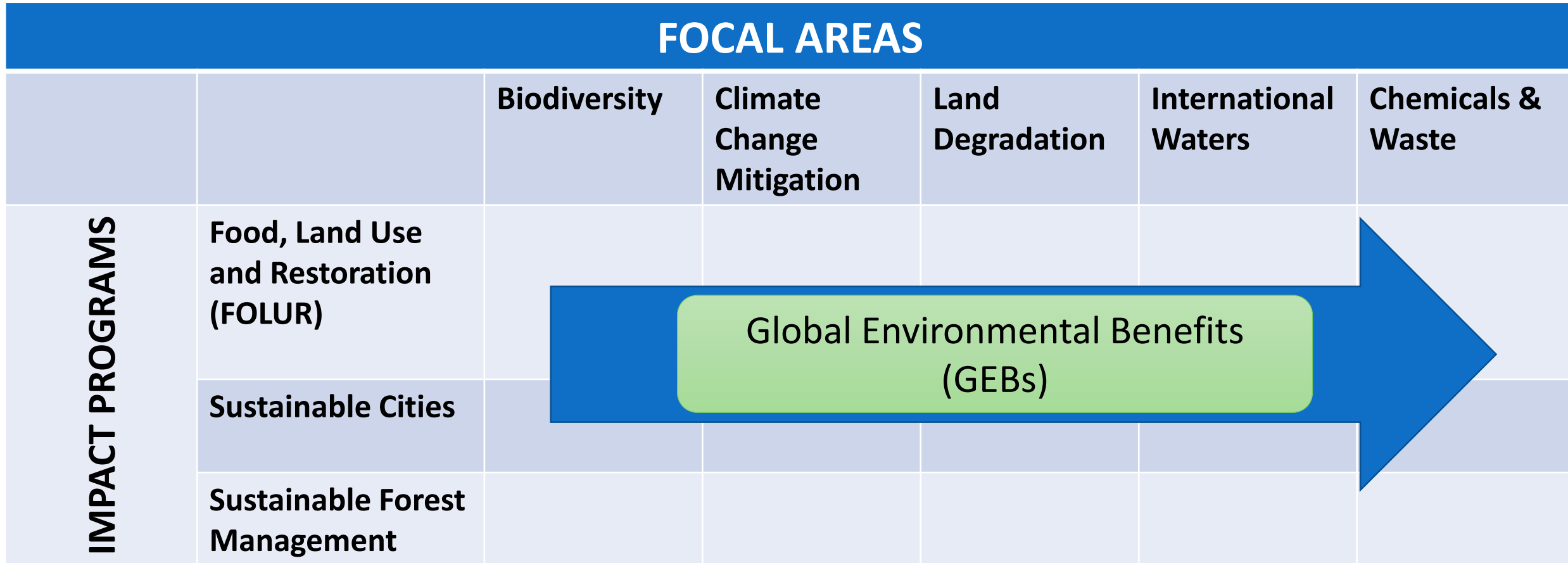


GEF-7 at a glance

- GEF-7 commenced on **July 1, 2018**
- **\$4.1 billion** total replenishment for the next 4-year period (2018–2022)
- Reiterating **GEF's unique position and mandate** with multilateral environmental agreements
- Promoting the next step from **integration** towards **transformation** based on lessons learned
- Context: a fast **changing global situation** - scale and urgency of environmental threats as well as opportunities
- Emphasis on **country-driven** process

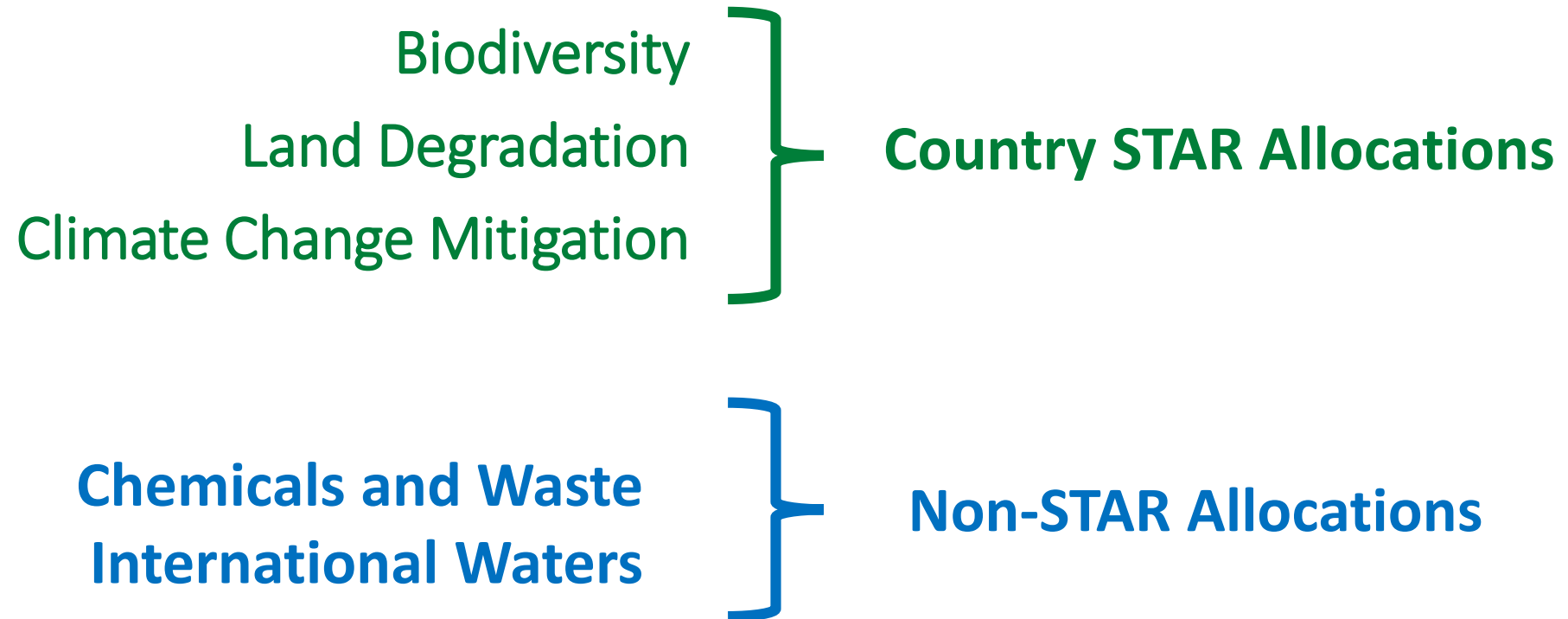


The GEF-7 Programming Directions



Core Indicators	GEF-7 Targets
Terrestrial protected areas created or under improved management for conservation and sustainable use (million hectares)	200
Marine protected areas created or under improved management for conservation and sustainable use (million hectares)	8
Area of land restored (million hectares)	6
Area of landscapes under improved practices (million hectares; excluding protected areas)	320
Area of marine habitat under improved practices to benefit biodiversity (million hectares; excluding PAs)	28
Greenhouse Gas Emissions Mitigated (million metric tons of CO₂e)	1500
Number of shared water ecosystems (fresh or marine) under new or improved cooperative management	32
Globally over-exploited marine fisheries moved to more sustainable levels (thousand metric tons)	3500
Reduction, disposal/destruction, phase out, elimination and avoidance of chemicals of global concern and their waste in the environment and in processes, materials and products (thousand metric tons of toxic chemicals reduced)	100
Reduction, avoidance of emissions of POPs to air from point and non-point sources (grams of toxic equivalent gTEQ)	1300
Number of direct beneficiaries disaggregated by gender as co-benefit of GEF investment	

Focal Areas



Biodiversity Focal Area

Goal: Maintain globally significant biodiversity in landscapes and seascapes

Objectives:

- **Mainstream biodiversity** across sectors as well as landscapes and seascapes;
- Address direct drivers to **protect habitats and species**; and
- Further develop biodiversity **policy and institutional frameworks**.



CBD Four-year Framework of Program Priorities for the GEF's 7th replenishment period (2018-2022):

*“Encourages the Global Environment Facility to continue and further strengthen **integrated programming** as a means to harness opportunities for synergy in implementing related multilateral environmental agreements as well as the 2030 Agenda for Development and its Sustainable Development Goals, in particular Sustainable Development Goals 14 and 15.”*



GEF-7 BD Strategy Entry Points:

I. **Mainstream biodiversity** across sectors as well as within production landscapes and seascapes

- Biodiversity **Mainstreaming** in Priority Sectors
- Preventing the Extinction of Known Threatened **Species**
- Natural Capital Assessment and **Accounting**;
- Sustainable Use of Plant and Animal **Genetic** Resources
- **Inclusive** Conservation



GEF-7 BD Strategy Entry Points:

II. Address direct drivers to **protect habitats and species**

- Prevention, Control and Management of **Invasive** Alien Species; and,
- **Financial** Sustainability, **Effective** Management, and Ecosystem **Coverage** of the Global Protected Area Estate



GEF-7 BD Strategy Entry Points:

III. Further develop biodiversity **policy and institutional frameworks**

- Implement the Cartagena Protocol on **Biosafety**
- Implement the Nagoya Protocol on **Access and Benefit Sharing**
- Support the **Convention on Biological Diversity** by improving biodiversity policy, planning and review (**Enabling Activities**)





A Few Sample Projects

Invasive Species - Preventing COSTS of Invasive Alien Species (IAS) in Barbados and the OECS Countries (UNEP; \$3.7M; GEF-6)

Protected Area Management and Mainstreaming (SVG) - Conserving Biodiversity and Reducing Land Degradation Using a Ridge-to-Reef Approach (UNDP; \$3.7M; GEF-6)

Mainstreaming and Natural Capital (Cuba) - Incorporating Multiple Environmental Considerations and their Economic Implications into the Management of Landscapes Forests and Production Sectors in Cuba (UNDP; \$9.6M; GEF-6)

Land Degradation Focal Area

Goals:

- Alignment with UNCCD LDN Agenda
- Integration with Impact Programs
- Harness private capital and to finance investments in SLM



Land Degradation Focal Area

LD 1. Support **on the ground implementation** of Land Degradation Neutrality (LDN)

LD 2. Creating an **enabling environment** to support LDN implementation globally, including UNCCD EAs



GEF-7 Land Degradation Focal Area programming

- Total allocation of \$475 million (10% increase compared to GEF-6)
- Programmed through STAR and Impact Programs
- Five programming (sub)objectives:
 - LD-1-1: Agriculture and Rangeland Systems (SLM)
 - LD-1-2: Sustainable Forest Management (SFM)
 - LD-1-3: Forest Landscape Restoration (FLR)
 - LD-1-4: Integrated landscapes & resilience (INRM)
 - LD-2: Enabling environments for LDN and SLM
- LD set-asides (outside STAR): Supporting regional themes/programs and UNCCD Enabling Activities



SOILCARE

- **CSIDS-SOILCARE Phase1:** Caribbean Small Island Developing States (SIDS) Multi-country Soil Management Initiative for Integrated Landscape Restoration and Climate-resilient Food Systems (FAO/SCCF)
- **Seven Caribbean SIDS:** Antigua and Barbuda, Belize, Grenada, Guyana, Haiti, Jamaica and Saint Lucia
- **Goal:** to achieve climate-resilient land degradation neutrality (LDN).



Climate Change Focal Area

The Global Context

- **2016** - Paris Agreement entered into force
- **2018** - at COP24 in December, Parties agreed on a set of rules to operationalize the Paris Agreement and periodically revise their NDCs
- **2019** - intermediate step before NDCs are updated in 2020
- **2023** - first assessment of where we stand with respect to the Paris Agreement goals (Global Stocktaking)



Climate Change Focal Area Programming



- Total allocation of **\$802 million**
- Programmed through **STAR (\$511 million)** and **Set Aside (\$291 million)**
- GHG mitigation target of **1.5 billion tCO₂eq of GHG emissions** will be avoided.
 - Impact Programs are expected to contribute significantly to this target
 - Also, new results architecture aims to capture GHG emissions mitigated through other focal areas
- **Complementarity with other climate funds**
 - Harness synergies through integrated approach for multiple GEBs
 - Focus on innovation and funding demonstration activities that can be scaled up through other means

GEF-7 Climate Change Focal Area Strategy

The GEF-7 Climate Change Focal Area Strategy aims to support developing countries to make transformational shifts towards low emission and climate-resilient development pathways.

- To achieve such outcomes, the CCM Strategy hinges on three objectives:
1. Promote innovation and technology transfer for sustainable energy breakthroughs
 2. Demonstrate mitigation options with systemic impacts (through the impact programs)
 3. Foster enabling conditions for mainstreaming mitigation concerns into sustainable development strategies



Objective 1: Promote innovation, technology transfer for sustainable energy breakthroughs

1: Decentralized renewable power with energy storage

- ✓ Energy storage
- ✓ Renewable energy-based decentralized systems (mini-grids)
- ✓ New business models

2: Electric drive technologies and electric mobility

- ✓ Electric mobility
- ✓ Regulatory frameworks that support electric mobility
- ✓ Integration of electric vehicles into the grid
- ✓ Planning for market changes

3: Accelerating energy efficiency adoption

- ✓ Buildings and energy efficiency retrofits in multi-family dwellings
- ✓ District heating and cooling
- ✓ Energy management for industry, equipment and appliances

4: Cleantech innovation

- ✓ Foster technology deployment, dissemination and transfer through entrepreneurship
- ✓ Develop SME and private sector partnerships
- ✓ Fostering local innovations and training entrepreneurs



Global Programme to Support Countries with the Shift to Electric Mobility (UNEP, UNDP, ADB, EBRD)

- Transport sector **responsible for 25%** of energy-related emissions
 - The IEA estimates global vehicle fleet will double by 2050
 - Regulatory, technical and financial barriers hinder uptake in developing countries: Purchase price, Charging infrastructure, Range anxiety and low awareness, Subsidized fossil fuels and lack of regulatory incentives to promote e-mobility
- **17 countries (including Antigua and Barbuda Jamaica and Saint Lucia)**
- **\$30 million CCM, \$433 million cofinancing**
- **Key objective:** de-risk investments through demonstration projects that strengthen country experience, facilitate accelerated learning and raise awareness of the multiple benefits of electric mobility
- Country project implementation supported by **regional support and investment platforms**, and **global thematic working groups** on 1) light vehicles, 2) heavy vehicles, 3) charging infrastructure and grid integration, 4) batteries

Objective 2: Demonstrate mitigation options with systemic impacts

❑ Sustainable Cities Impact Program

Targeting urban interventions with significant CCM potential to help cities shift towards low-emission urban development

- Low-carbon planning
- Renewable energy and energy efficiency
- Solid waste and wastewater management

❑ Food System, Land Use, and Restoration (FOLUR) Impact Program

Increase productivity and support livelihoods while reducing GHG emissions and increasing soil quality

- ✓ Climate smart agriculture
- ✓ Sustainable land management
- ✓ Sustainable supply chain for key agricultural commodities

❑ Sustainable Forest Management Impact Program

Maintaining and restoring globally important carbon stocks

- ✓ Amazon
- ✓ Congo Basin
- ✓ Sustainable Drylands

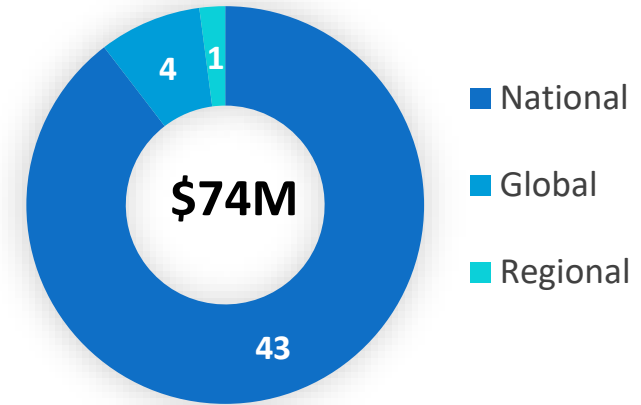
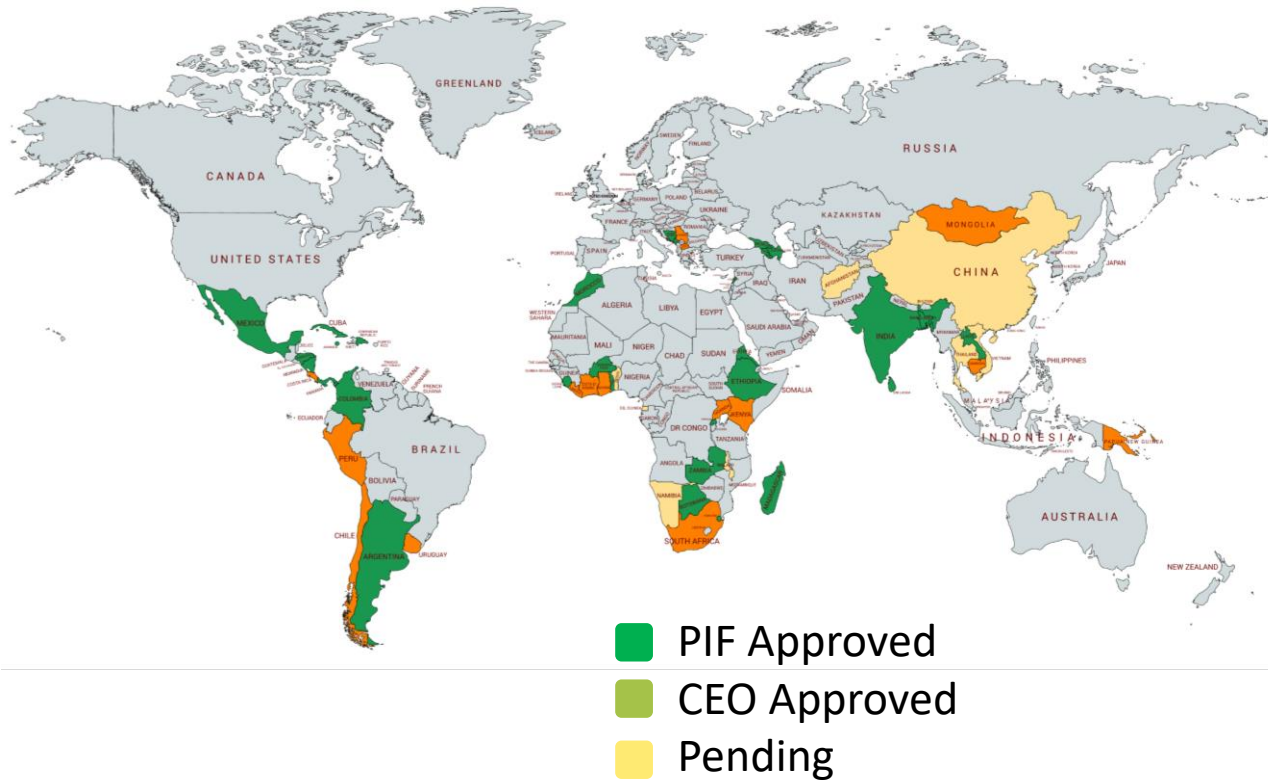


Objective 3: Foster enabling conditions for mainstreaming mitigation concerns into sustainable development strategies



- **Capacity-building Initiative for Transparency (CBIT)**
 - To strengthen national institutions for transparency-related activities
- **Support in the preparation of NDCs**
 - Countries can use their STAR allocation
- **National Communications (NCs) and Biennial Update Reports (BURs)**
 - Up to \$500,000 and \$352,000 respectively (from GEF Global Set-aside for Enabling Activities)

CBIT Programming Status and Regional Examples



- 17 projects under implementation
- 14 LDCs and 7 SIDS supported to date
- Including **Antigua and Barbuda, Cuba, Dominican Republic, and Jamaica**
- Agencies involved to date: UNDP, UNEP, IDB, FAO, CI
- \$55 million allocated in GEF-7 set-aside resources

GEF-7 Climate Change Adaptation Strategy

The GEF manages two additional funds for climate change adaptation:

- **Least Developed Countries Fund (LDCF)**
- **Special Climate Change Fund (SCCF)**

Goal:

to strengthen resilience and reduce vulnerability to the adverse impacts of climate change in developing countries, and support their efforts to enhance adaptive capacity

Innovative • Strategic • Gender responsive • Developing capacity



Building on Comparative Advantage...

- ✓ **Country-driven and global**

National: NAPA, NAPs, translating NDCs into action

Global: addressing gaps, vetting concepts, capacity building, LDC work programme



- ✓ **Ability to offer integrated solutions**

Multiple benefits, MEA-relevant, alignment of relevant SDGs



- ✓ **Focus on innovation**

SCCF evaluated as “ideal incubator” to test and refine concepts



- ✓ **Demonstrated track record for delivery**

Supporting over 330 adaptation projects

Assessed as highly effective, impactful, and with value for money in independent evaluations, donor reviews





Special Climate Change Fund: Objectives and Entry Points

1. Reduce vulnerability and increase resilience through innovation and technology transfer for climate change adaptation

➤ **Challenge program for adaptation innovation**

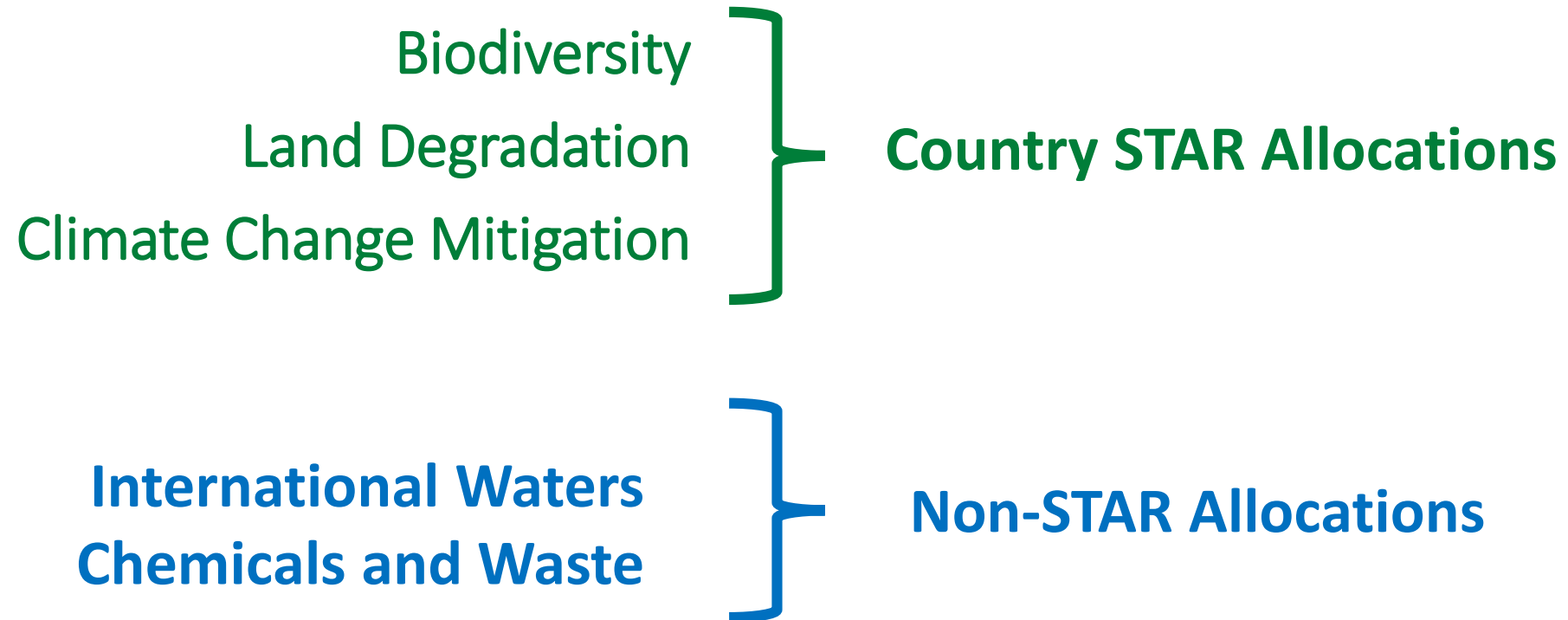
2. Mainstream climate change adaptation and resilience for systemic impact

➤ **Incentive for mainstreaming adaptation and resilience**

3. Foster enabling conditions for effective and integrated climate change adaptation

➤ **Support for enabling activities in response to COP guidance**

Focal Areas



Chemicals and Waste Focal Area

- Stockholm Convention on Persistent Organic Pollutants (**POPs**)
- Minamata Convention on **Mercury**
- Montreal Protocol on Substances that Deplete the **Ozone** Layer
- Strategic Approach to **International Chemicals** Management

A background image showing a group of children, with a boy in the foreground looking towards the camera. The image is faded and serves as a backdrop for the text on the right side of the slide.

100,000 metric tons - reduction disposal/destruction, phase out, elimination and avoidance of chemicals of global concern

1,300 gTEQ - reduction, avoidance of emissions of POPs to air from point and non-point sources.



GEF-7 Replenishment

- The total envelope approved is **4.1 Billion** USD.
- **599 Million** has been allocated to chemicals and wastes
 - \$359 million notionally allocated to Stockholm Convention
 - \$206 million notionally allocated to Minamata Convention
 - \$23 million notionally allocated to Montreal Protocol
 - \$12 million notionally allocated to SAICM

GEF-7 Chemicals and Wastes Program

- **Industrial Chemicals Program**, will eliminate POPs, Mercury and ODS by focusing on major industrial sectors that use or produce chemicals covered by the MEAs such as ASGM, textiles, plastics, electronics, consumer products etc.
- **Agricultural Chemicals Program**, will eliminate POPs , HHPs and mercury based agricultural chemicals and introduce low or non-chemical alternatives and practices. It will also focus on the management and safe disposal of agricultural plastics contaminated by POPs and mercury.
- **LDC/SIDS program** will foster regional approaches, incubate technologies that are developed in these countries and seek to create economies of scale for achieving the sound management of chemicals and waste.
- **Enabling Activities** related to the different conventions, include:
 - NIPs and NIP Updates
 - MIAs and ASGM NAPs



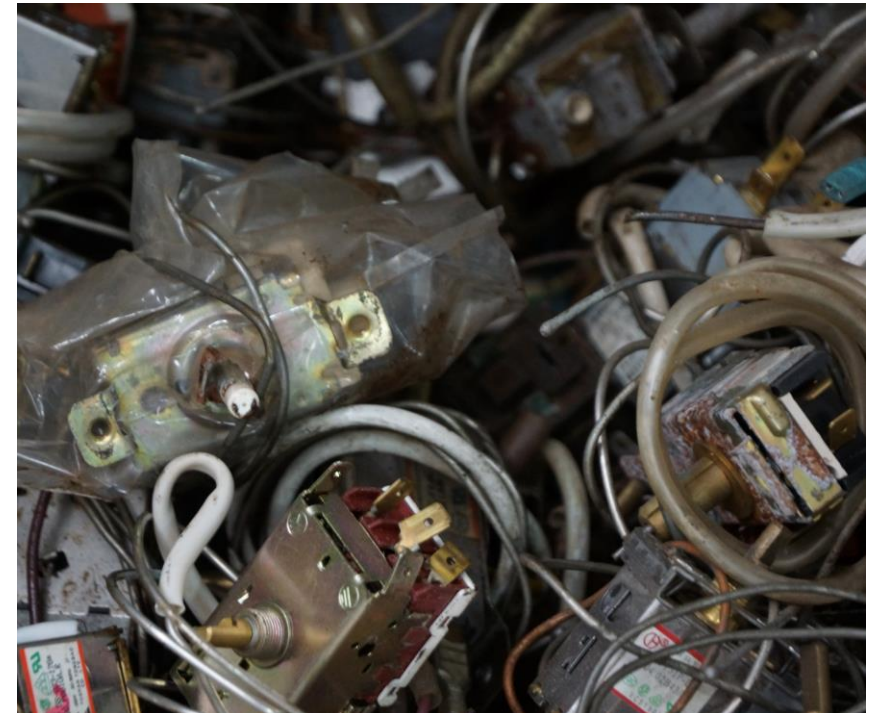


Programming Principles

- Cost Effectiveness
- Sustainability
- Innovation
- Private Sector Engagement
- Builds on, or uses existing networks, regional, national and sub-national institutions
- Supports the objectives of the Impact Programs and of other Focal Area strategies
- Prioritized under National Implementation Plans/Minamata Initial Assessments/ASGM National Action Plans

Potential Interventions

- Reducing/eliminating GEF relevant chemicals from the supply chains of materials and products including textiles, electronics, construction materials
- Reducing and eliminating emissions of GEF relevant chemicals and materials from food production
- Reducing/eliminating emissions/use of GEF relevant chemicals from the built environment and energy intensive manufacturing industries
- Implementing Sustainable Low And Non-chemical Development in SIDS and LDCs





GEF ISLANDS

- Implementing
 - Sustainable
 - Low
 - And
 - Non-Chemical
 - Development, in
 - SIDS
- This Program seeks to
 - Prevent future build up of toxic substances in the territories of SIDS.
 - Unlock resources for integrated chemicals and waste management
 - Develop the mechanisms to manage products, materials and substances that cannot be avoided.

GEF ISLANDS

- 27 Countries
- 3 Regions – Caribbean, Indian Ocean, Pacific
- 4 Implementing Agencies – UNEP, UNDP, FAO, IDB
- \$56 M GEF Resources + \$389 M in additional resources
- 23, 000 t of chemicals and associated wastes
- 197 gTEQ UPOPs
- 180,000 t avoided plastics entering the oceans
- Additional interested countries can join the program in a future program amendment



Enabling Activities

- The majority of SIDS have only completed their initial NIP for the Stockholm Convention
- SIDS are encouraged to access GEF resources to update and review their NIPs to include the chemicals listed at COP 4-9
- SIDS that are either signatory or Party to the Minamata Convention can access GEF resources to do a Minamata Initial Assessment.



International Waters Focal Area

Transboundary (multi-national) water governance

I. Strengthen **Blue Economy** opportunities

II. Improve governance in the **Areas Beyond National Jurisdiction (ABNJ)**

III. Enhance water security in **freshwater ecosystems**



I. Coastal Ecosystems

Strengthening blue economy opportunities by addressing major threats facing coastal ecosystems:

- **Habitat** degradation
- Sustainable **fisheries**
- **Pollution** from land-based sources



II. Areas Beyond National Jurisdiction (ABNJ)

Improving governance in the high seas

- Illegal, under-reported and unregulated **(IUU) fisheries**
- Strengthening capacity of Regional Fisheries Management Organizations **(RFMOs)**
- Port State Measures Agreement implementation **(PSMA)**



III. Freshwater Ecosystems

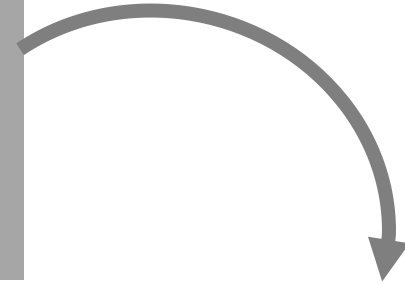
Enhancing water security of shared rivers, lakes, groundwater and delta systems with emphasis on the water, food, energy and environment nexus

- **Cooperation** on shared freshwater resources
- Early exchange of **information** and early warning
- Improved **governance** and cooperation in surface and groundwater basins
- **Safety** of water, food, energy and the environment.



Impact Programs: a sharper focus on where the GEF can have the biggest impact

...collective efforts to transform key social and economic systems that put the planet at risk,



Multiple, global environmental benefits:

- Biodiversity
- Land Degradation
- International Waters
- Climate change
- Chemicals & waste

Thereby maximizing the GEF's positive impact on the global commons

Key economic & social systems:

- Food
- Urban demands
- Energy
- Production and consumption, etc.

Impact Programs

Carefully targeted, transformative investments contribute towards...

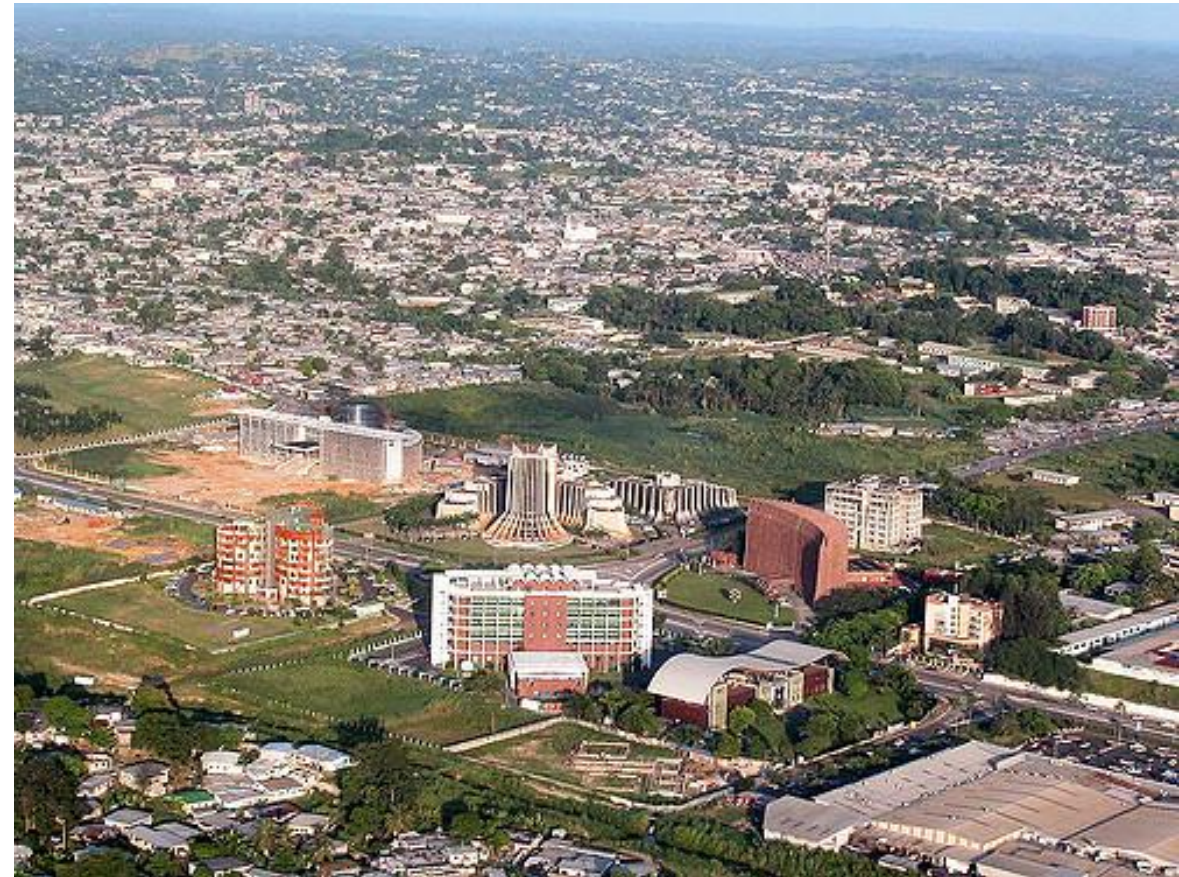


Impact Programs

Sustainable Cities

Sustainable Forest Management

Food Systems, Land Use and Restoration
(FOLUR)



Sustainable Cities Impact Program – the need

- Rapid and unplanned urban growth is one of the key drivers of environmental degradation.
 - 70% of global GHG emissions
 - Direct implication on food systems
 - Urban sprawl affecting natural infrastructure and biodiversity
- Cities offer effective entry points for major investments in global environmental benefits (GEBs).
- They offer natural integrated systems, power of innovation and wide stakeholder base to achieve large scale GEBs.



Sustainable Cities Impact Program – The Approach

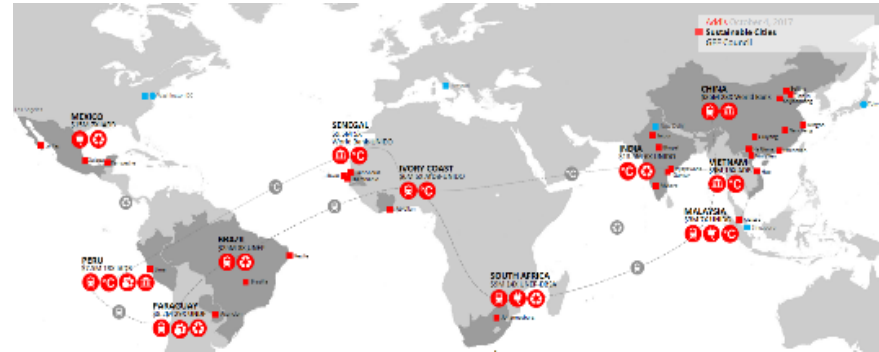
Adopt an integrated approach for sustainable urban development across sectors and governance levels building off GEF-6.

Dual support provided by GEF

- Specific grant support to selected cities for integrated urban development
- Global support on decision tools, knowledge, policy, finance, etc.

Lead Agency: TBD

GEF 6- City-level Projects (27 cities, 11 countries)



PIONEERED BY THE ROCKEFELLER FOUNDATION



I.C.L.E.I. Local Governments for Sustainability



Impact Programs

Sustainable Cities

Sustainable Forest Management

Food Systems, Land Use and Restoration (FOLUR)



Sustainable Forest Management: Overview

Focus on globally important forests

Amazon
Forest
(WB)

Congo Basin
Forest
(UNEP)

Dryland
Forests
(FAO)

Require regional, ecosystem-scale approach to
maintain integrity of the entire Biome



Impact Programs

Sustainable Cities

Sustainable Forest Management

**Food Systems, Land Use and
Restoration (FOLUR)**



Food Systems, Land Use and Restoration (FOLUR) : Overview (WB)

Achieving Transformational Shift – “Sustainability”



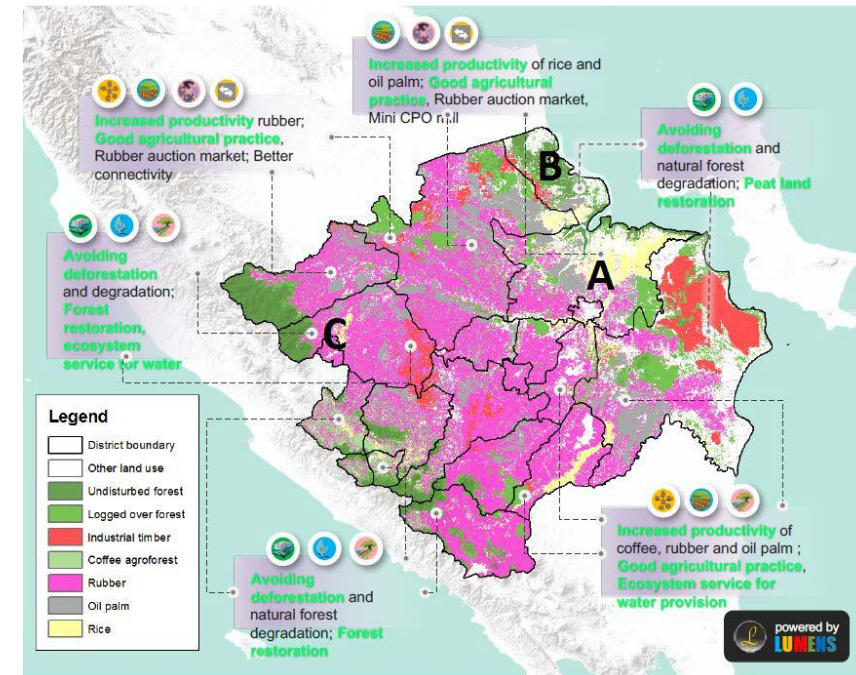
I. Efficient and effective
food value chains for
multiple benefits

II. Removing
deforestation from
supply chains

III. Expand restoration of
degraded lands

FOLUR: Spatially explicit geographies

- Evidence of environmental threats (*commodity driven deforestation, unsustainable agricultural systems, etc.*)
- Evidence of commitment to promote sustainability in the supply or value chain
- Potential for applying a comprehensive land use approach – *linking production, conservation, and restoration at scale*



Comprehensive Land Use Planning

FOLUR: Targeted Landscapes

- Production landscapes that remain critical for GEBs but where remaining forests are threatened by expansion of commercial commodity production
- Landscapes where production of globally important food crops or livestock creates high intensity negative externalities
- “Frontier” landscapes where opportunity exists to preempt expansion and get ahead of commercial commodity-driven forest loss
- Landscapes that are highly degraded and in need of restoration for the ecosystem services they provide to agricultural production



GEF-7 Review Criteria for All Projects

1. Results and global environmental benefit (GEB) delivery
2. Relevance to Impact Program (if appropriate)
3. Replicability / scalability of projects
4. Co-financing and leveraged investment
5. Private sector engagement
6. Gender integration

June 2019 Work Program Highlights

Multi-country projects and programs

- CSIDS-SOILCARE – LD and adaptation
- ISLANDS – Chemicals & waste
- E-Mobility – Climate Change Mitigation
- SFM Impact Programs – Amazon
- Global Wildlife Program – Belize

National Projects

- Dominican Republic – Integrated productive landscapes
- Trinidad and Tobago - Conservation and Agroecological Land Restoration in Productive Landscapes

Thank you! Gracias! Merci!

Sarah Wyatt, Biodiversity

swyatt@thegef.org

Milena Gonzalez Vasquez, Climate Change Mitigation

mgonzalezvasquez@thegef.org

Fareeha Iqbal, SIDS team lead and Climate Change Adaptation

fiqbal@thegef.org