


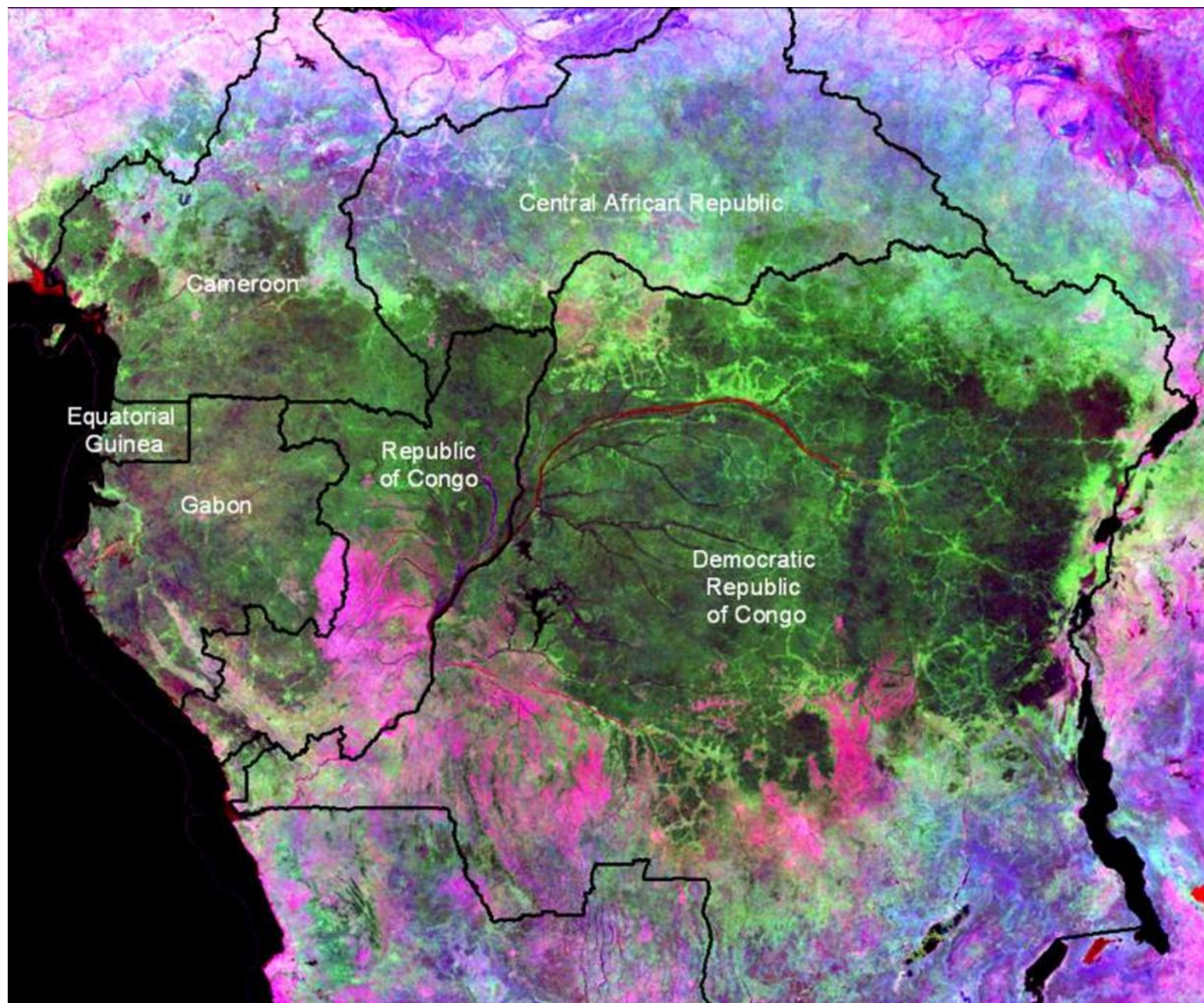


PROGRAMME A IMPACT

**FEM-7 Programme à Impact sur les Paysages Durables
du bassin du Congo (CBSL IP)**

A close-up photograph of an elephant's head and trunk as it splashes water. The elephant's trunk is curled, and water is being thrown into the air, creating a misty spray. The elephant's tusks are visible, and its skin is dark and wrinkled. The background is a body of water with some greenery visible in the distance.

FEM-7 Programme financé à hauteur
de 57,2 millions de US\$ par le FEM et
387,3 millions de cofinancement



Mise en œuvre du CBSL IP - Six paysages transfrontaliers-clés cibles

Campo Ma'an-Rio
Campo

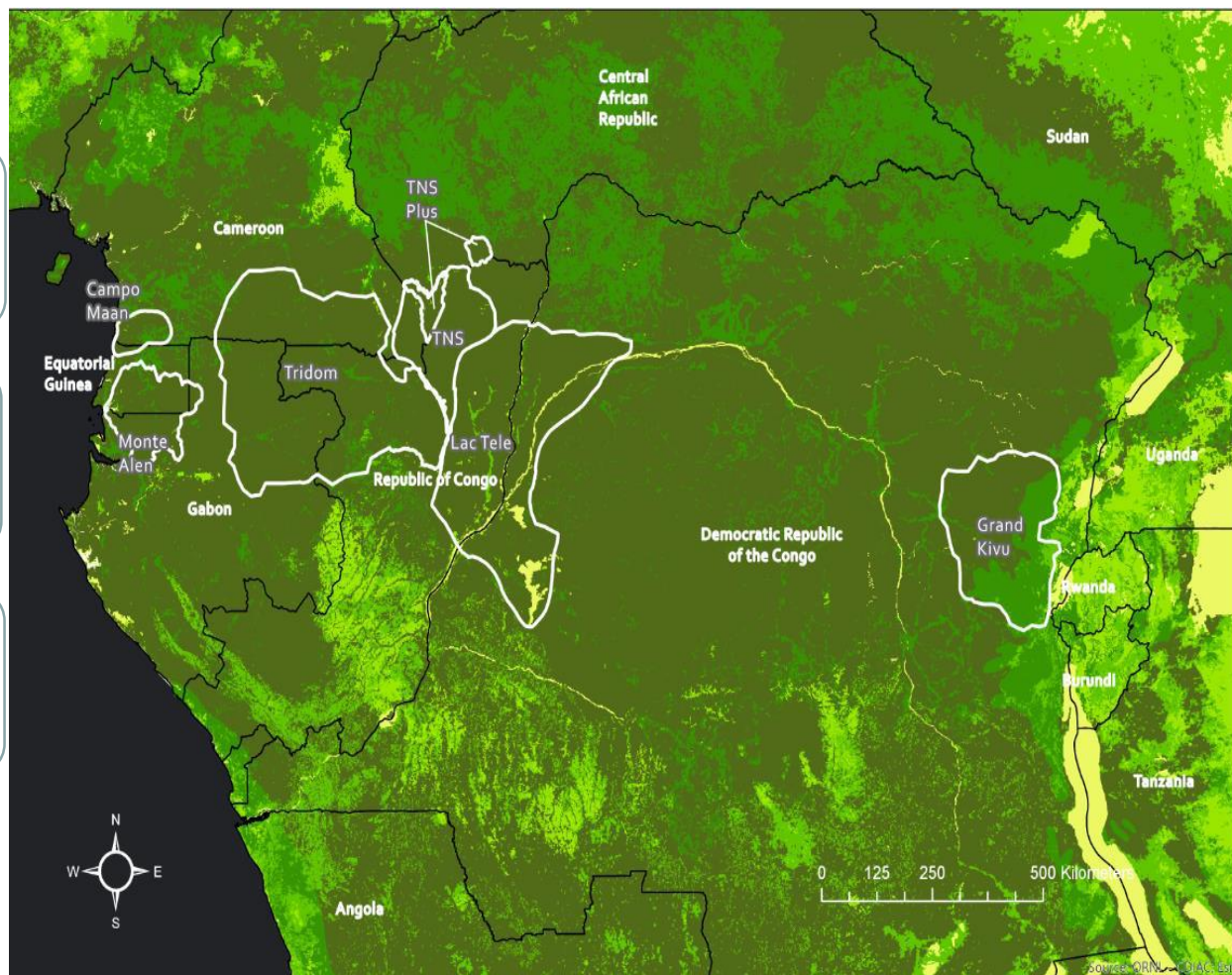
Monts Alen-Monts
de Cristal

Le Tri-National Dja-
Odzala-Minkebe ou
TRIDOM

Le Tri-National de la
Sangha ou TNS

L'ensemble Cuvette
Centrale / Lac Télé et
Lac Tumba

Le Grand Kivu



Principales barrières identifiées dans la préparation du programme



Développements sectoriels isolés et conflictuels

Faible gouvernance des aires protégées

L'absence d'implication effective des communautés locales, des peuples dépendants des forêts et du secteur privé dans la conservation et l'utilisation durable des forêts

Mise en œuvre insuffisante d'actions pour la conservation et l'apprentissage à l'échelle transfrontalière

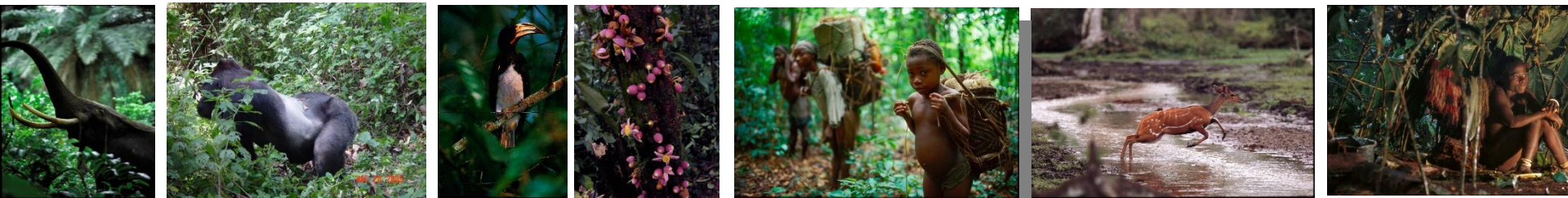
CBSL – IP Mise en Oeuvre

6 Projets Nationaux et un Projet regional

Projet Regional	Cameroon	RCA	RDC	RC	Gabon	Guinee Eq.
PNUE	WWF US	BM	PNUE	PNUE	BM	IUCN

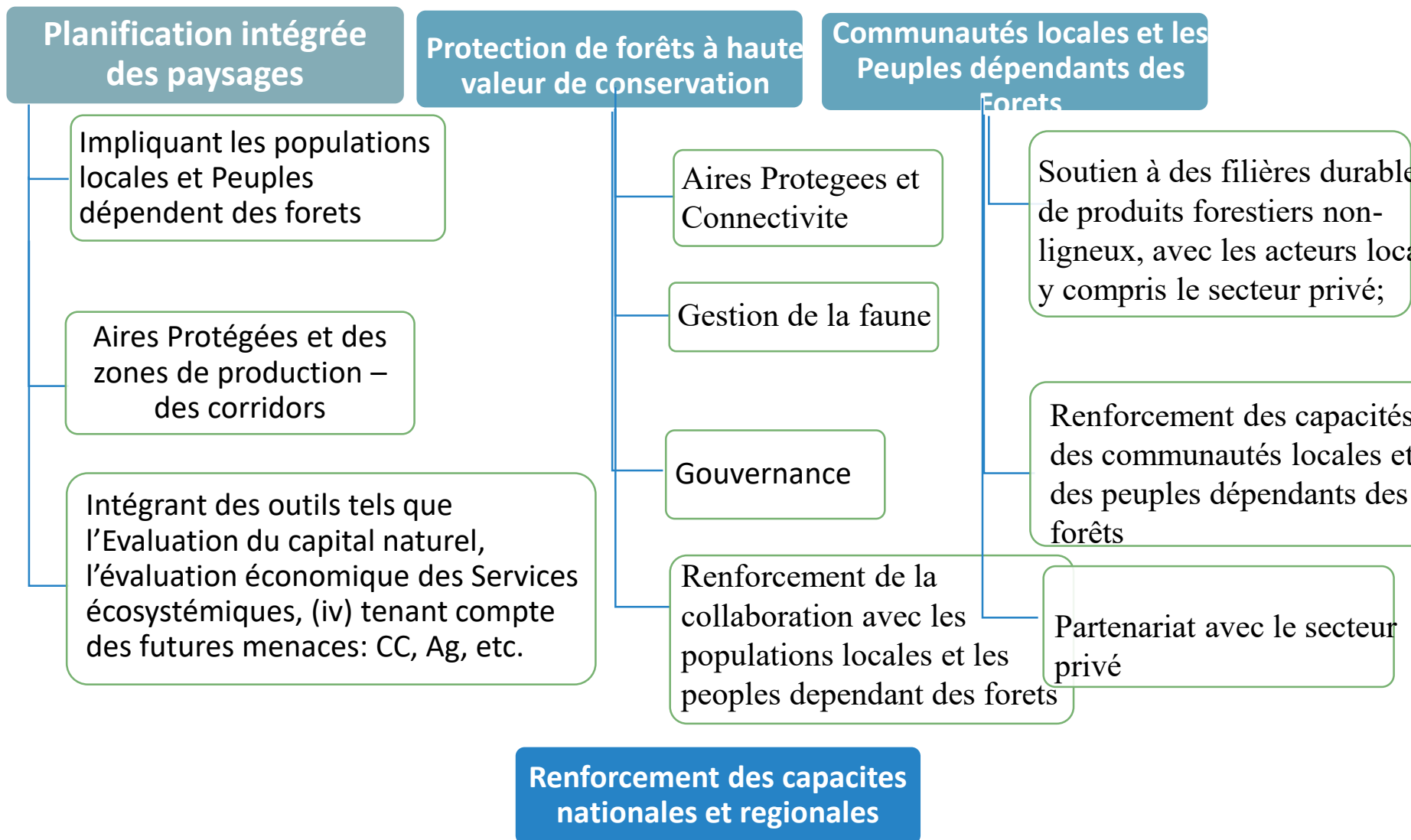
Programme a Impact –CBSL IP : **OBJECTIF**

Le programme vise à promouvoir le changement dans la protection et la gestion durable des forets du bassin du Congo à travers des approches basées sur les paysages, qui renforceront la gouvernance locale, les communautés locales, les populations dépendantes des forêts et des partenariats avec le secteur privé.



CBSL – IP

Axes Strategiques



Programme a Impact –CBSL IP :

Bénéfices Environnementaux Globaux

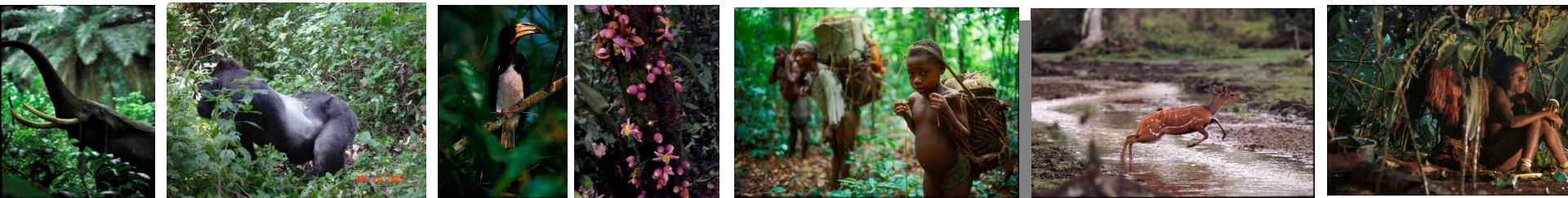
Le CBSL IP visera à améliorer la gestion effective de vingt espaces protégés couvrant plus de 6,4 millions ha,

,Créer 600,000 ha de nouvelles aires protégées

Restaurer 500,000 ha de forêts et paysages agroforestiers

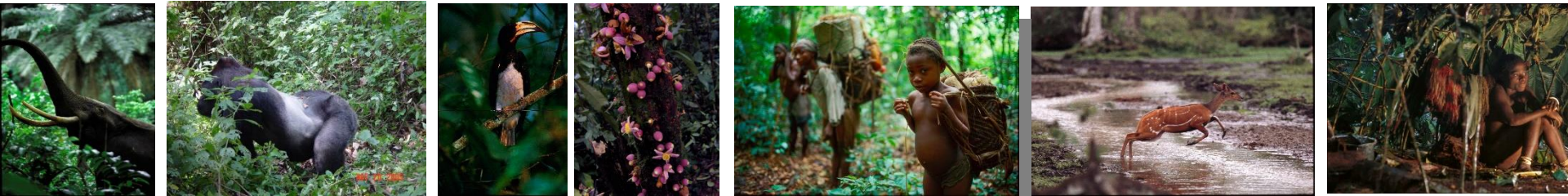
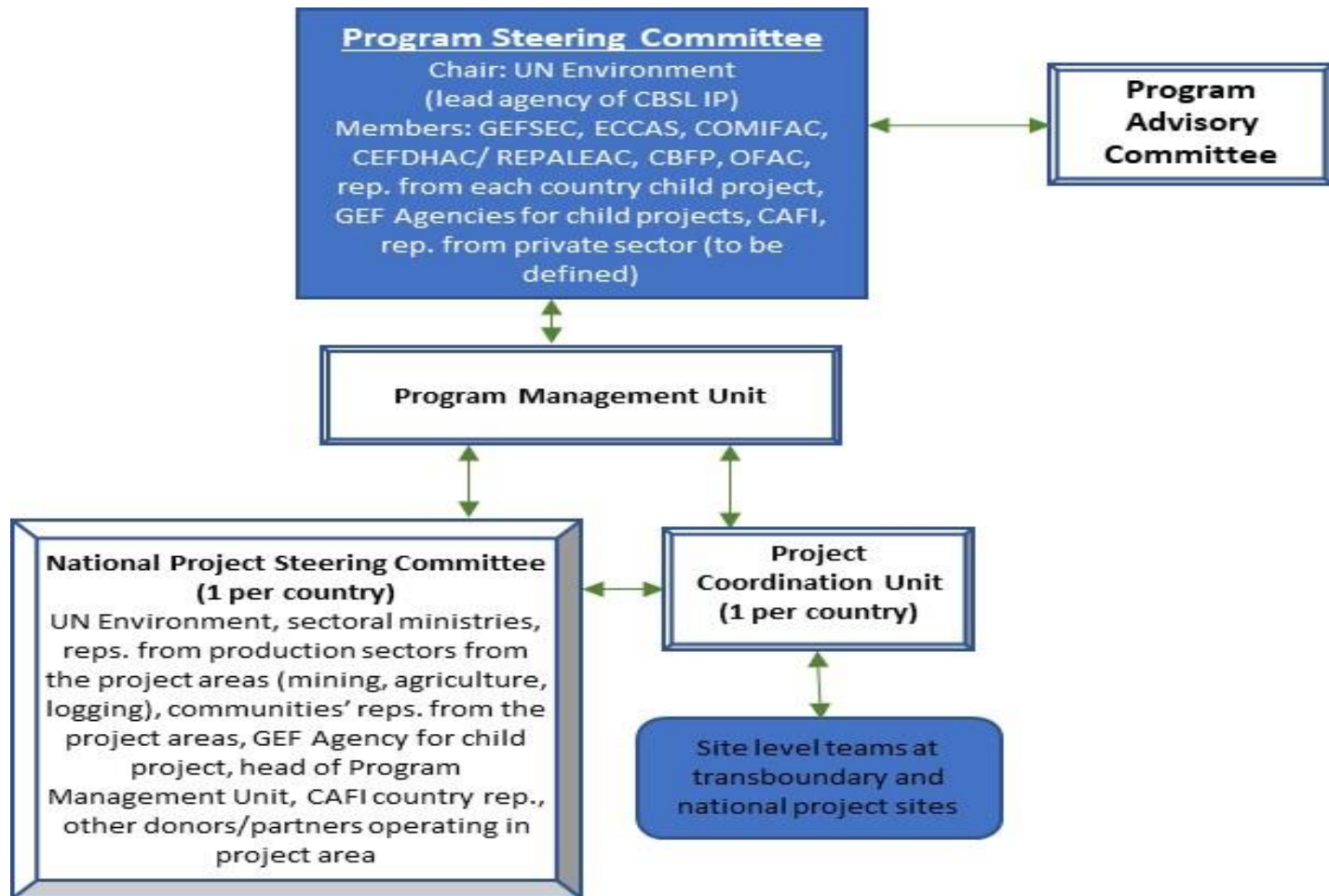
Améliorer la gestion des terres sur plus de 4,3 millions ha

Toutes ces activités induiront des réductions de gaz à effet de serre de l'ordre de 121 millions de tCO₂e et viseront 358,000 bénéficiaires, plus de la moitié étant des femmes (



Programme a Impact –CBSL IP :

Structure de Gouvernance





Programme à Impact: Paysages Durables du bassin du Congo (CBSL IP)

Project Objective: Transform Cameroon's globally important forests in the Congo Basin through an integrated landscape approach, to secure their ecological integrity and the livelihoods of forest dependent people

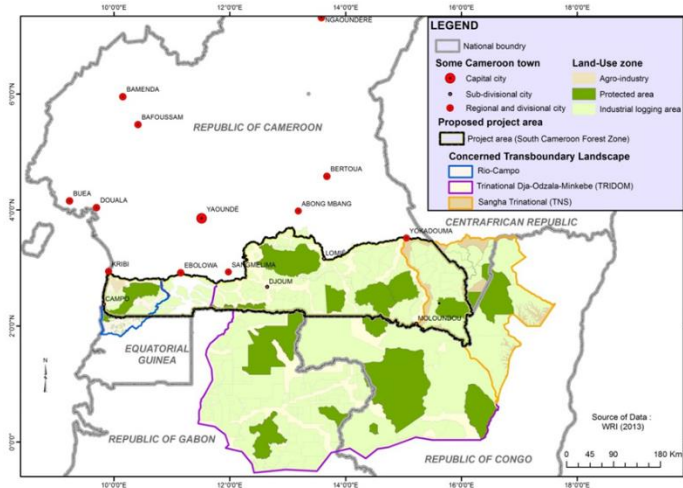
Components:

1. Integrated landscape planning and management
2. Sustainable Forest Management
3. Promoting sustainable wildlife management
4. Benefit generation from biodiversity through sustainable tourism development
5. Monitoring and Evaluation, Knowledge Management

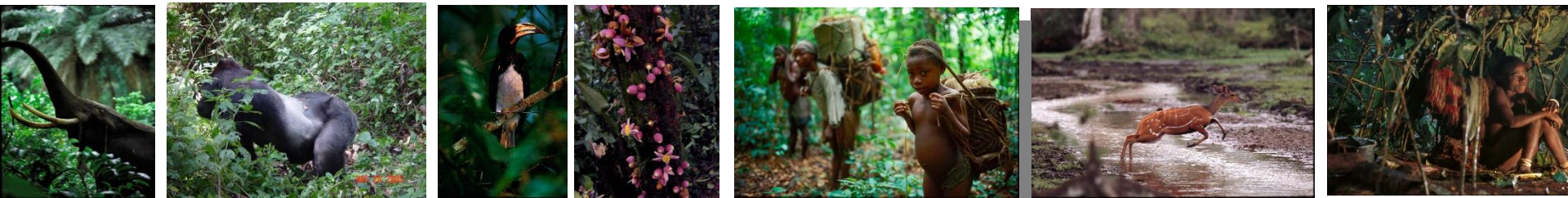
Project amount: US\$10,473,00 million

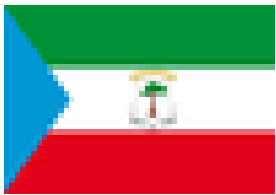
Executing Partner: Ministry of Environment

GEF Implementing Agency: WWF US



Project Sites.





Programme à Impact: Paysages Durables du bassin du Congo (CBSL IP)

Project Objective: Facilitate natural resource management by transforming the Rio-Campo and Monte Alene landscapes with an inclusive landscape approach

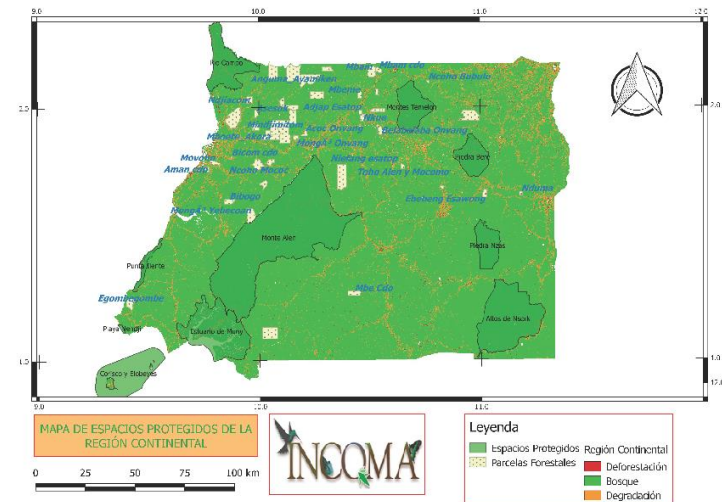
Components:

1. Integrated and improved land use planning, policies, and management
2. Ensuring the long-term viability of forests providing important habitat to endangered species and critical ecosystem services
3. Reduced community and production sector impacts on important services of forests in landscapes
4. Knowledge Exchange, Partnership, Monitoring and Assessment

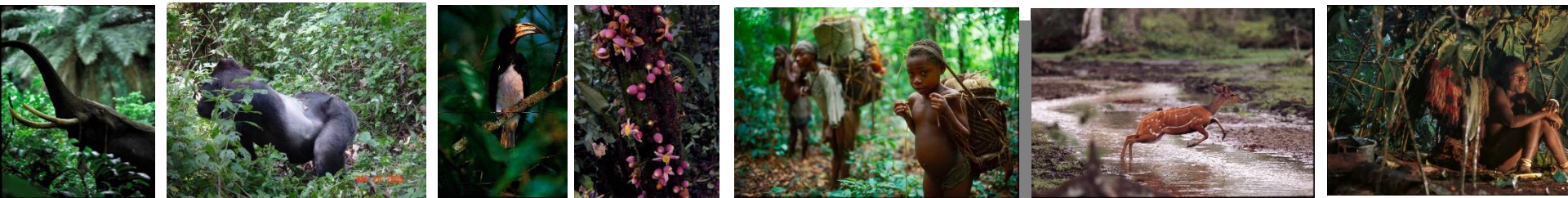
Project amount: US\$ 5,836,500 million

Executing Partner: Ministry

GEF Implementing Agency: IUCN



Project Sites.



Programme à Impact: Paysages Durables du bassin du Congo (CBSL IP)

Project Objective: Improving integrated natural resources management and sustainable rural livelihoods in the Ngotto Forest landscape and Mbaéré-Bodingué National Park (PNBM) :

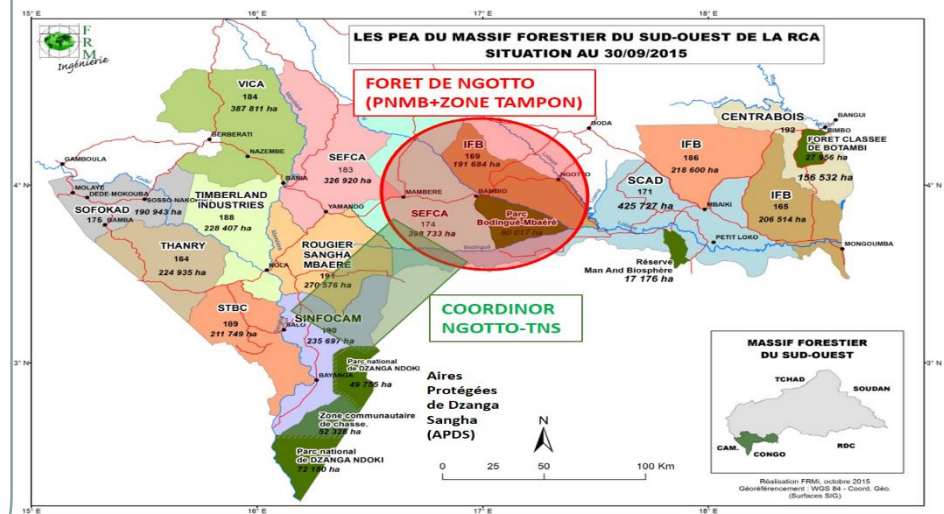
Components:

1. Institutional support
2. Conservation
3. Local development

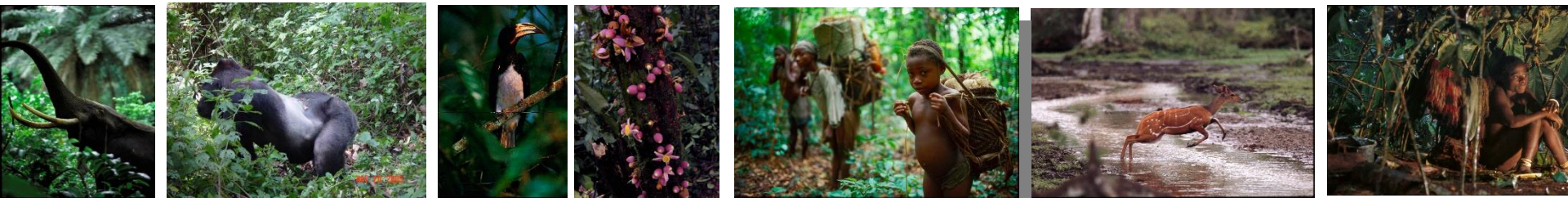
Project amount: US\$ 8,291,500 million

Executing Partner: Ministry

GEF Implementing Agency: WB



Project Sites.





Programme à Impact: Paysages Durables du bassin du Congo (CBSL IP)

Project Objective: To enhance the institutional and planning frameworks for sustainable transformation of the Minkebe landscape

Components:

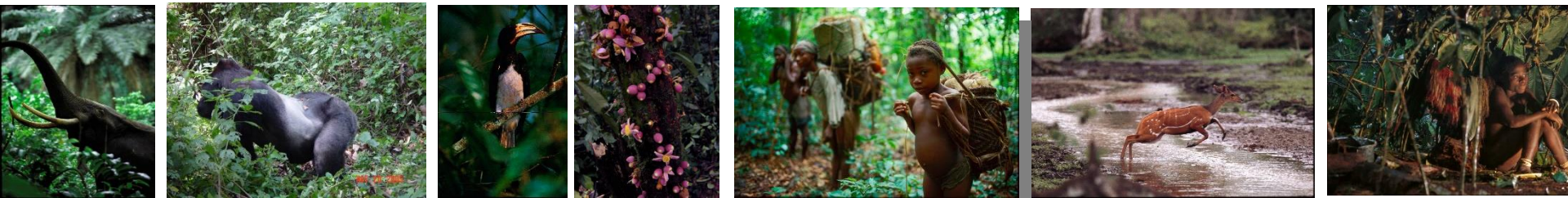
1. Strengthening Policy and Decision Making for Sustainable, Transparent, Accountable, and Inclusive Forest Landscape Management
2. Promoting the role of Communities in Integrated Forest and Landscape Management
3. Project Coordination and Transboundary Cooperation

Project amount: US 7,157,499 million

Executing Partner: Ministry

GEF Implementing Agency: WB

Project Sites.





Programme à Impact: Paysages Durables du bassin du Congo (CBSL IP)

Project Objective: To promote a model for integrated community-based conservation and protected area management applied to the peatland area and its forest ecosystem of the RoC Lac Télé Landscape.

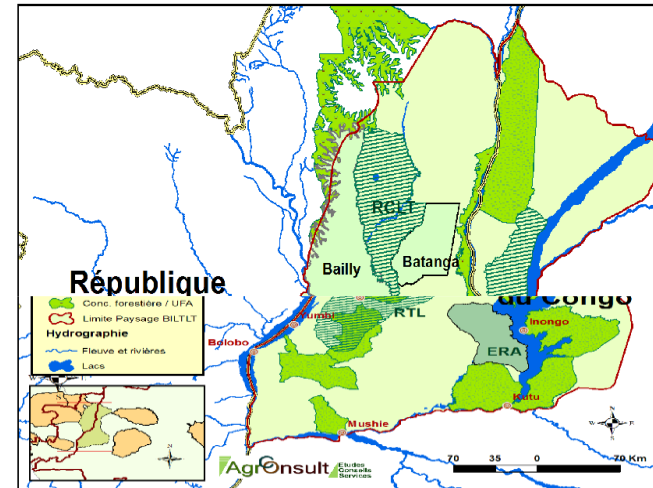
Components:

1. Supporting development and implementation of LUPs for RoC Lac Tele landscape protected areas and surrounding landscape with a focus on ensuring and formalizing community involvement
- 2 Community management of natural resources
3. Diversifying communities' income sources e.g. through promotion of ecotourism
4. Engaging the private sector in conservation
5. Comms, Knowledge Management and project monitoring and Evaluation.

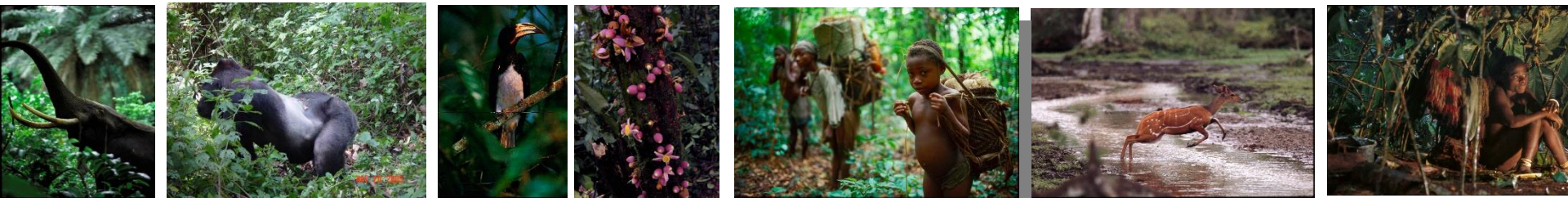
Project amount: US 6,661,050 million

Executing Partner: Ministry of Environment

GEF Implementing Agency: UNEP



Project Sites.





Programme à Impact: Paysages Durables du bassin du Congo (CBSL IP)

Project Objective: To scale up and improve forest landscapes through community-based natural resources management in targeted transboundary landscapes.

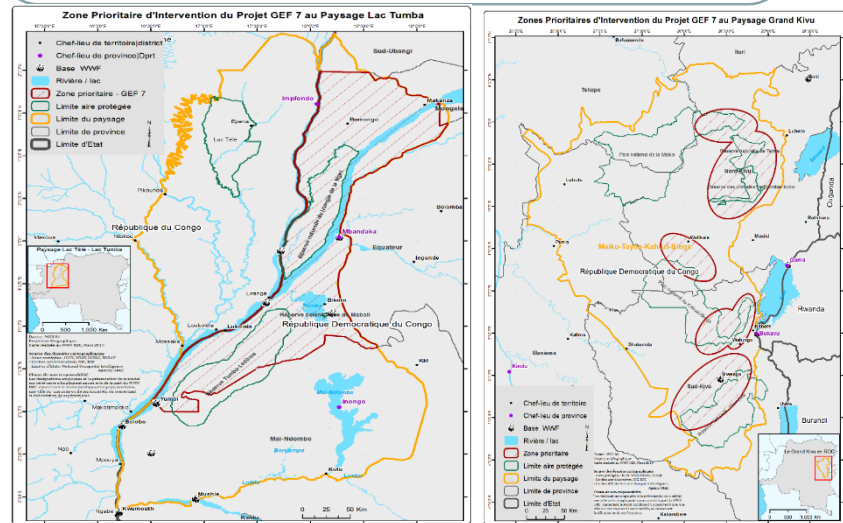
Components:

1. Mainstreaming Integrated Land use Planning (ILP) for conservation and sustainable development
2. Ensuring Biodiversity conservation and carbon sequestration in forest landscapes
3. Promoting effective sustainable land use in priority landscape
4. Improving capacity, knowledge management and transboundary collaboration.

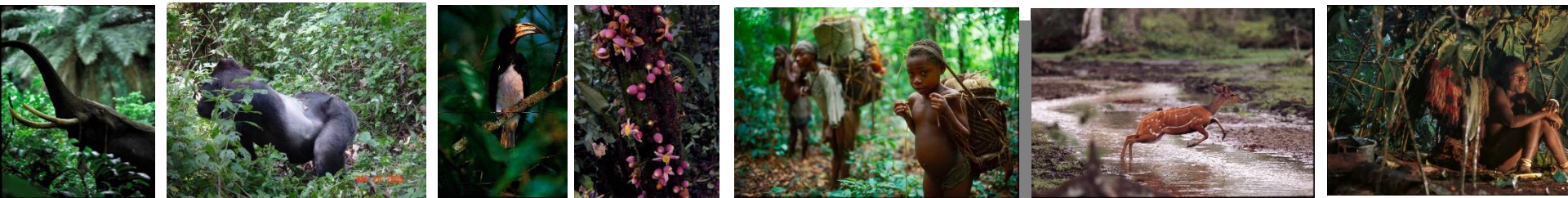
Project amount: US 15,000,000 million

Executing Partner: Ministry of Environment and Sustainable Dvpt

GEF Implementing Agency: UNEP



Project Sites.



Programme à Impact: Paysages Durables du bassin du Congo (CBSL IP) – Projet Regional



Project amount: US 8,929,679 million

Executing Partner:

GEF Implementing Agency: UNEP

Project Objective: Catalyze Transformational Change in Transboundary Landscapes by Scaling Best Practices and Innovations at a Regional Level

Components:

1. Integrated Transboundary Land Use Planning
2. Addressing Wildlife Crime and the Conservation of Elephants and Great Apes
3. Local Community, Forest Dependent People and Private Sector Empowerment
4. Knowledge Management
5. Program Coordination and Communication

Project Sites.



[illegible]