

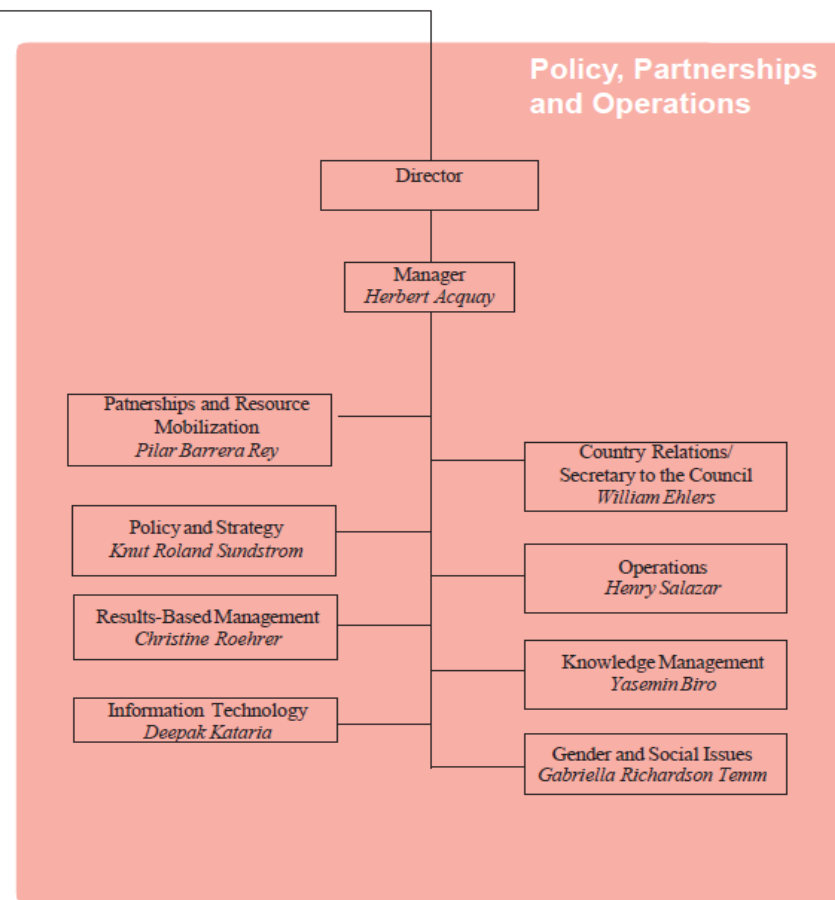
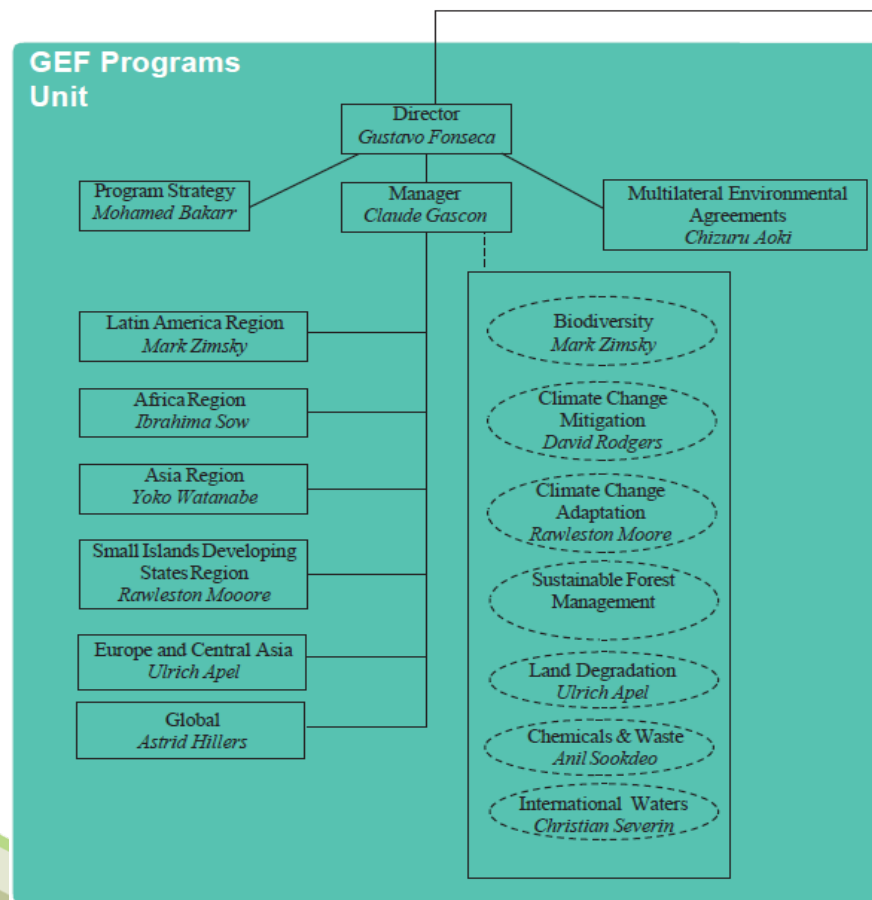
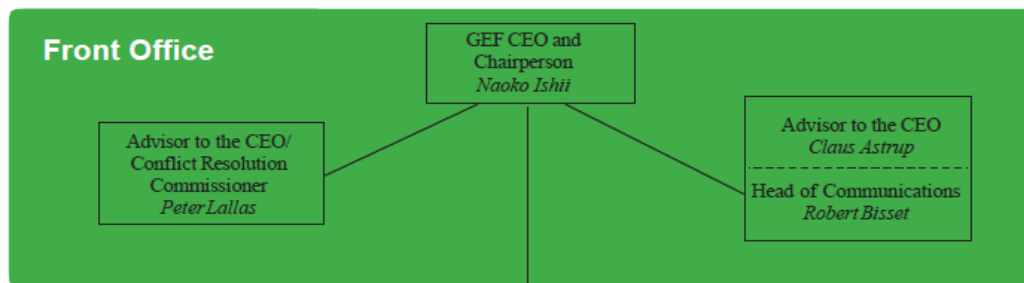


GLOBAL ENVIRONMENT FACILITY
INVESTING IN OUR PLANET

www.theGEF.org

GEF Secretariat Organization

GEF Organogram





Overview: Internal Organizational Structure of GEFSEC

- Front Office
- GEF Programming Unit
- GEF Policy, Partnerships and Operations Unit



GLOBAL ENVIRONMENT FACILITY
INVESTING IN OUR PLANET

GEF Policy, Partnerships and Operations Unit: Eight Work streams

1. Partnerships and Resource mobilization
2. Country Relations
3. Policy and Strategy
4. Operations
5. Results-based Management
6. Gender and Social Issues
7. Knowledge Management
8. Information Technology



GLOBAL ENVIRONMENT FACILITY
INVESTING IN OUR PLANET

Partnerships and Resource Mobilization

- Manage partnerships across the GEFSEC
- Manage the GEF Council, Donor and Agency Relationships
- Manage the GEF replenishment process and other resource mobilization initiatives.
- Manage the GEF-Civil Society Engagement
- Process proposal under the Small Grant Program



GLOBAL ENVIRONMENT FACILITY
INVESTING IN OUR PLANET

. Country Relations

- Lead country engagement
- Lead the development and implementation of the Country Support Program
- Cross-cutting capacity development
- Conflict resolution



GLOBAL ENVIRONMENT FACILITY
INVESTING IN OUR PLANET

Policy and Strategy

- Lead the development and implementation of GEF policies.



GLOBAL ENVIRONMENT FACILITY
INVESTING IN OUR PLANET

Operations

- Development and implementation of GEF operational guidelines and procedures, including on the project cycle
- Financial planning for the GEF work program



GLOBAL ENVIRONMENT FACILITY
INVESTING IN OUR PLANET

Results-based Management

- Development and implementation of a robust results framework for the GEF
 - Annual Portfolio Monitoring Report
 - Corporate scorecard



GLOBAL ENVIRONMENT FACILITY
INVESTING IN OUR PLANET

Knowledge Management

- Development and implementation of modalities/platforms to make lessons from GEF project readily accessible to GEF Agencies and other Stakeholders.



GLOBAL ENVIRONMENT FACILITY
INVESTING IN OUR PLANET

Gender and Other Social Issues

- Development of policies and guidelines to mainstream gender into GEF operations



GLOBAL ENVIRONMENT FACILITY
INVESTING IN OUR PLANET

Information Technology

- Upgrade the GEF Project Information Management system, including procedures for online submission and processing of GEF project proposals.
- Develop a platform for online learning in the GEF.



GLOBAL ENVIRONMENT FACILITY
INVESTING IN OUR PLANET

Conclusion



GLOBAL ENVIRONMENT FACILITY
INVESTING IN OUR PLANET