



stakeholder engagement and gender mainstreaming

Expanded Constituency Workshop 2017



stakeholder engagement and gender equality

participation matters

- ownership, partnerships and accountability
- social and economic needs of individuals and stakeholder groups
- diverse skills, experiences and knowledge

gender equality matters

- men and women use natural resources differently
- men and women are affected differently by changes to natural resources
- men and women have different rights or access to resources, and decision-making power

agents of change



global commitments and processes

- RIO (1992), CEDAW (1997), Beijing Platform for Action (1995), MDGs (2000)
- Crosscutting priority in Multilateral Environmental Agreements
 - CBD, UNCCD, UNFCCC, (Paris Agreement)
- SDGs and the 2030 Agenda for Sustainable Development
- GEF 2020 strategy, GEF-6 policy recommendations and programme directions



Public involvement and stakeholder engagement

GEF Policy (1996)

Outlining principles for Public Involvement

- contributes to environmental and financial sustainability
- needs to address social, cultural and economic needs of people
- responsibility rests with government and GEF Agencies
- needs to be flexible, broad-based and transparent

GEF Guidelines (2014)

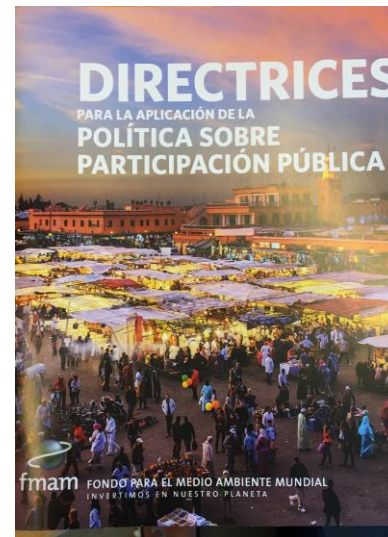
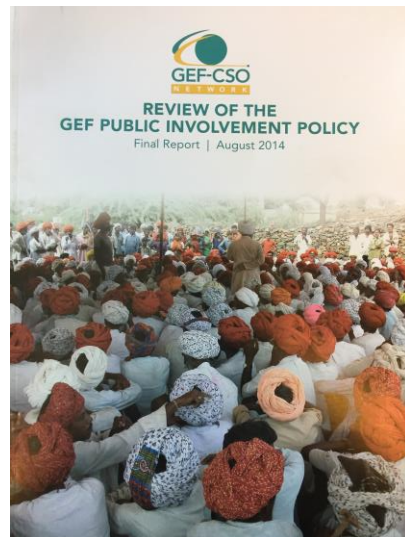
Providing steps and mechanisms across the GEF project cycle

- information dissemination
- consultation for setting priorities
- consultation for project/program design and implementation
- reporting, monitoring and evaluation
- conflict Resolution and grievance function

Review of Public Involvement Policy (1996)

August 2014 – CSO Network review/
October - GEF Sec formulates Guidelines

June 2015 - Working Group on Public
Involvement Established



Review GEF Stakeholder Involvement Policies, Guidelines, Practices

- A Working Group on the GEF Public Involvement Policy (PIP) was created in June 2015
- Working Group comprised of GEF Partner Agencies, GEF Secretariat, GEF Operational Focal Points, GEFCSO Network, GEF Indigenous Peoples Advisory Group, GEF IEO
- Consultant engaged to provide background analysis and to develop recommendations for Working Group
- Working Group presented recommendations to GEF Council Meetings in October 2016

Update of Policy on Stakeholder Engagement

On-going process



The Stakeholder Engagement Policy

sets out the core principles and mandatory requirements for stakeholder engagement in GEF governance and operations, with a view to ensuring transparency, participation and inclusion

Principles

- Constructive, responsive and transparent engagement
- Supports fair, balanced, and inclusive participation
- Applies to all GEF-financed activities
- Sustained commitment and action
- Easy and timely access to information
- Applies to all GEF

Agency Mandatory Requirements

- Indicative information on stakeholders to be engaged and means of engagement
- Stakeholder engagement plans or equivalent and resource requirements throughout the project/ program cycle
- Oversee the implementation of stakeholder engagement and include information on progress, challenges and outcomes

Secretariat Responsibilities

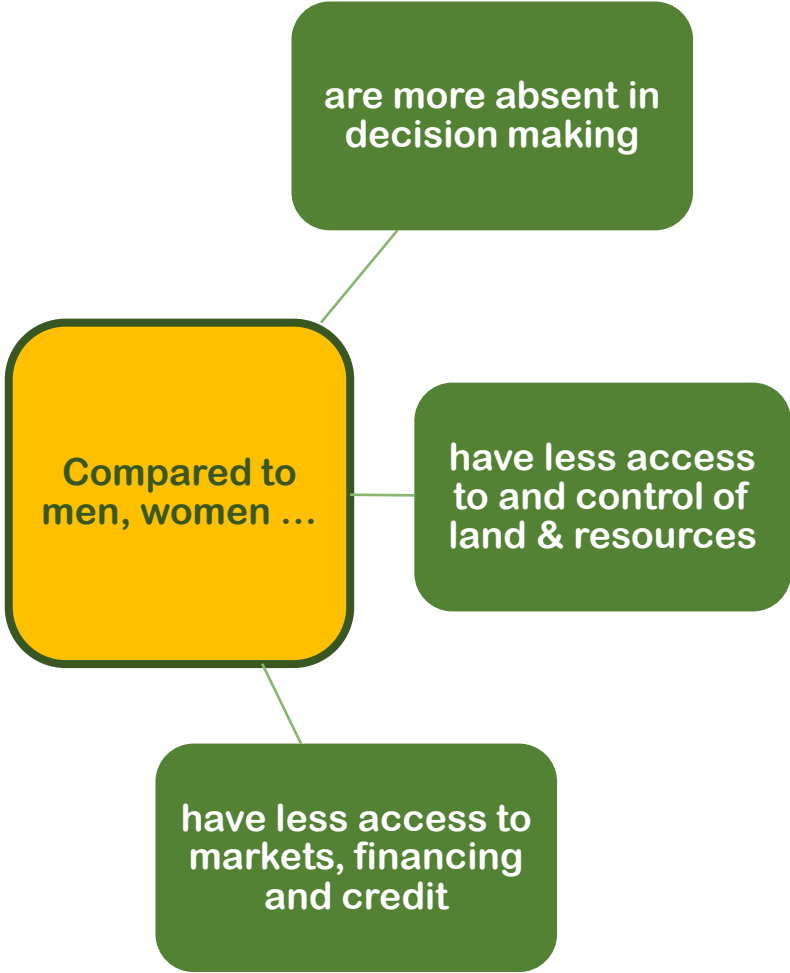
Review and Monitoring

- Assess whether adequate measures have been proposed to ensure effective stakeholder engagement throughout the life-cycle of the activity.
- Update and maintain project and program templates to support the implementation of this Policy.
- Report annually to the Council on stakeholder engagement across GEF-financed activities

Activities led by Secretariat

- Engage with stakeholders in a transparent and inclusive manner aimed at fair representation.
- Provide for appropriate stakeholder engagement in the development of GEF policies, guidelines and strategy.

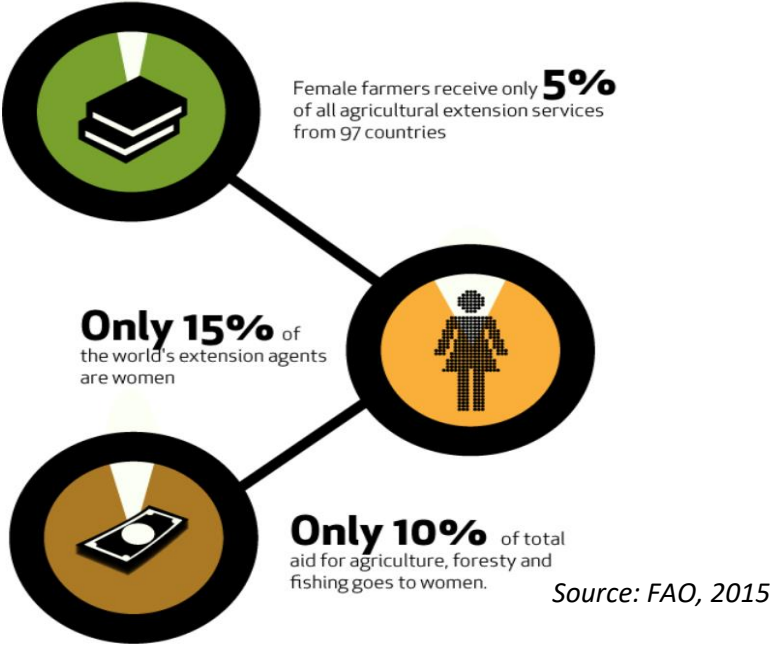
Gender and the Environment nexus

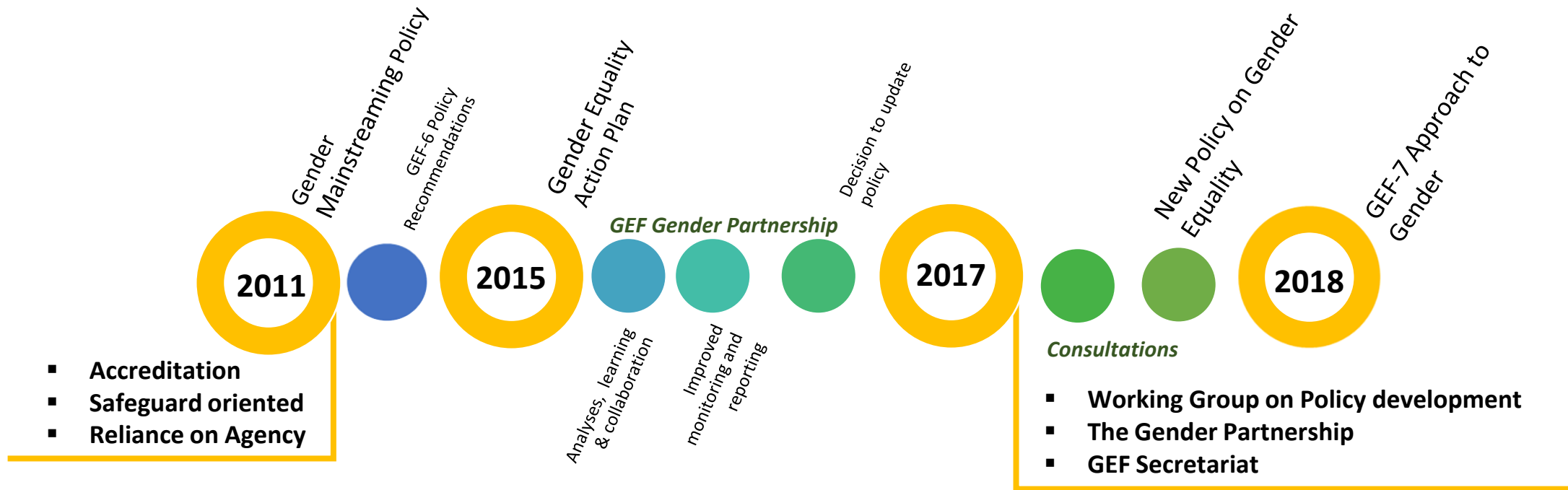


Heads of national environmental sector ministries in UN Member States (women and men)



Source: IUCN (2014)





Change in the making

2011 Policy

- Accreditation Pilot
- A “do no harm” approach
- Unclear requirements across the GEF project cycle (what and when)
- Weak entry points to monitor, report on implementation and results

New Policy Intent

- Align with best practices & new MEA decisions on gender
- Shift from a “do no harm” towards a “do-good” approach
- Clarify and strengthening project cycle requirements (e.g. gender analysis)
- Leverage/incentivize strategic entry points to promote gender equality to support delivery of GEBs
- Improve collective monitoring & reporting
- Clarify responsibilities in terms of capacity development, learning and knowledge generation

Draft Policy Outline

Cover note

1. Introduction
2. Application
3. Purpose
4. Definitions
5. Goal
6. Principles

7. Mandatory requirement

A. GEF-financed activities

B. Governance & accountability

C. Learning, Capacity Development

D. Agency policies, procedures & accountability

Key changes

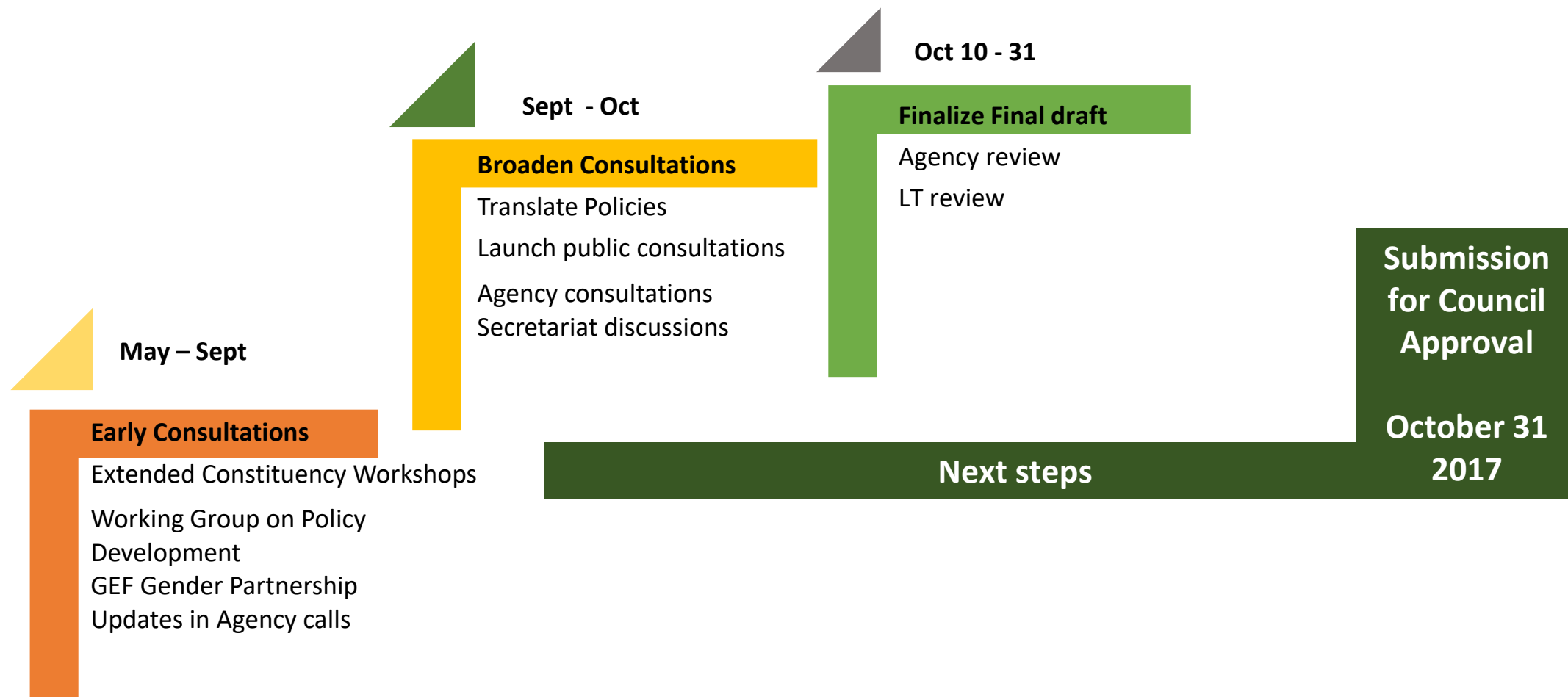
- Documentation requirements at PIF and CEO Endorsement/ Approval (gender analysis, activities and gender indicators)
- Review of PIF and CEO Endorsement/ Approval by the Secretariat
- Reporting requirement on gender (in MTRs and TEs)
- Generate and share knowledge
- Focus on capacity development

Implementation Considerations

Guidelines

Strategy & action plan

Results framework



THANK YOU

For more information on:

Public involvement please contact pilar barrera rey: pbarrera@thegef.org

Gender equality please contact gabriella richardson temm: grichardsontemm@thegef.org

www.thegef.org