

COMMUNITY ACTION GLOBAL IMPACT

GEF SMALL GRANTS PROGRAMME
GEF-7 STRATEGY & REGIONAL STATUS

GEF ECW IN FIJI 2019



COMMUNITY ACTION GLOBAL IMPACT

SGP Overview

Overview

- Local solutions to global environmental problems
- Supports community-based initiatives and actions
- Since 1992, GEF Corporate Program, implemented by UNDP



KEY FACTS



21,600
PROJECTS

on global environmental
issues.



UP TO
\$50,000
PER GRANT

directly to CSOs and local
communities for innovative and
community-driven ideas that can
then be replicated and scaled up.



US\$582
MILLION

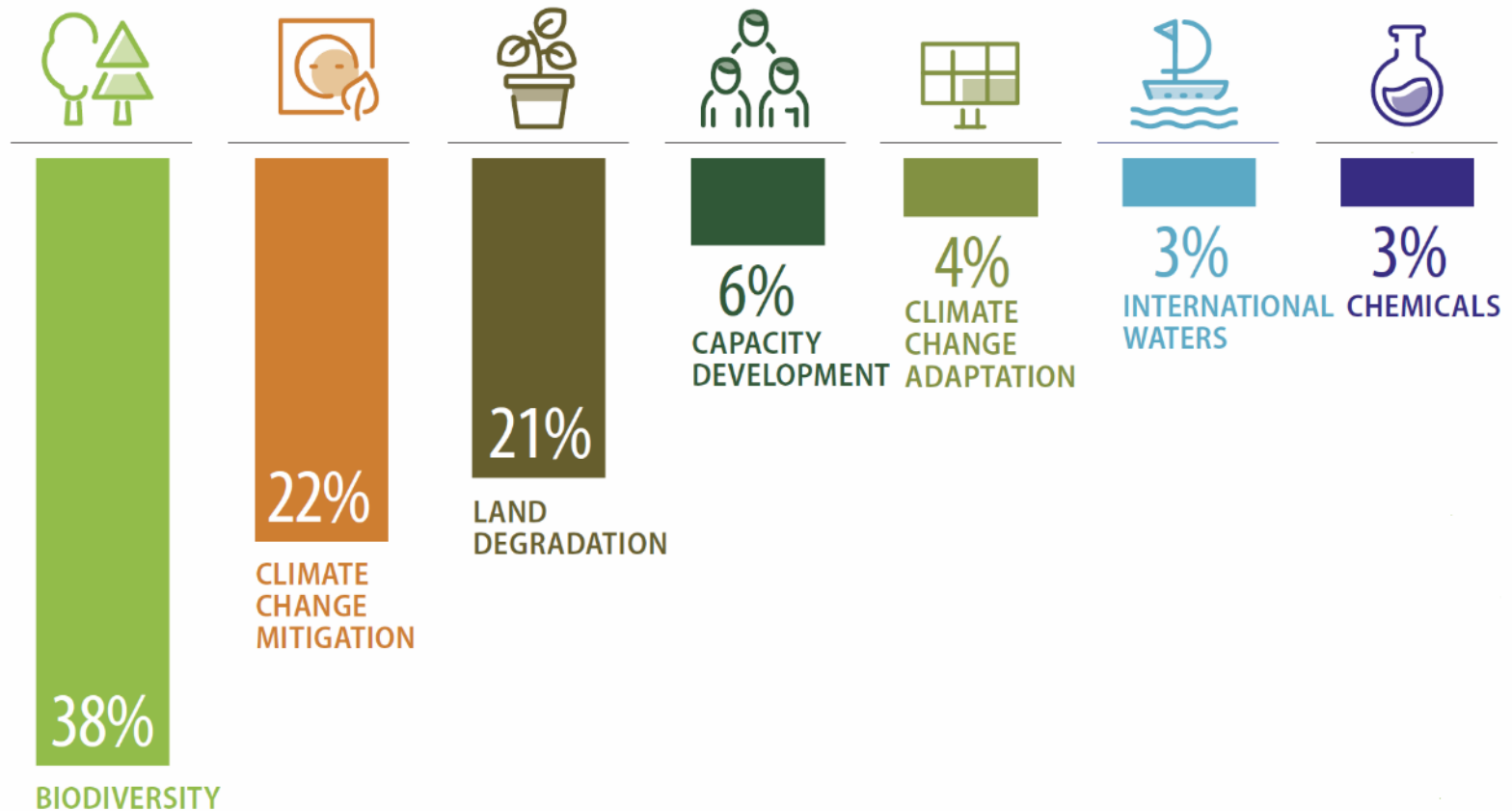
in total Grants and equal
amount of cofinance.

Where we work



What we do

FOCAL AREA DISTRIBUTION

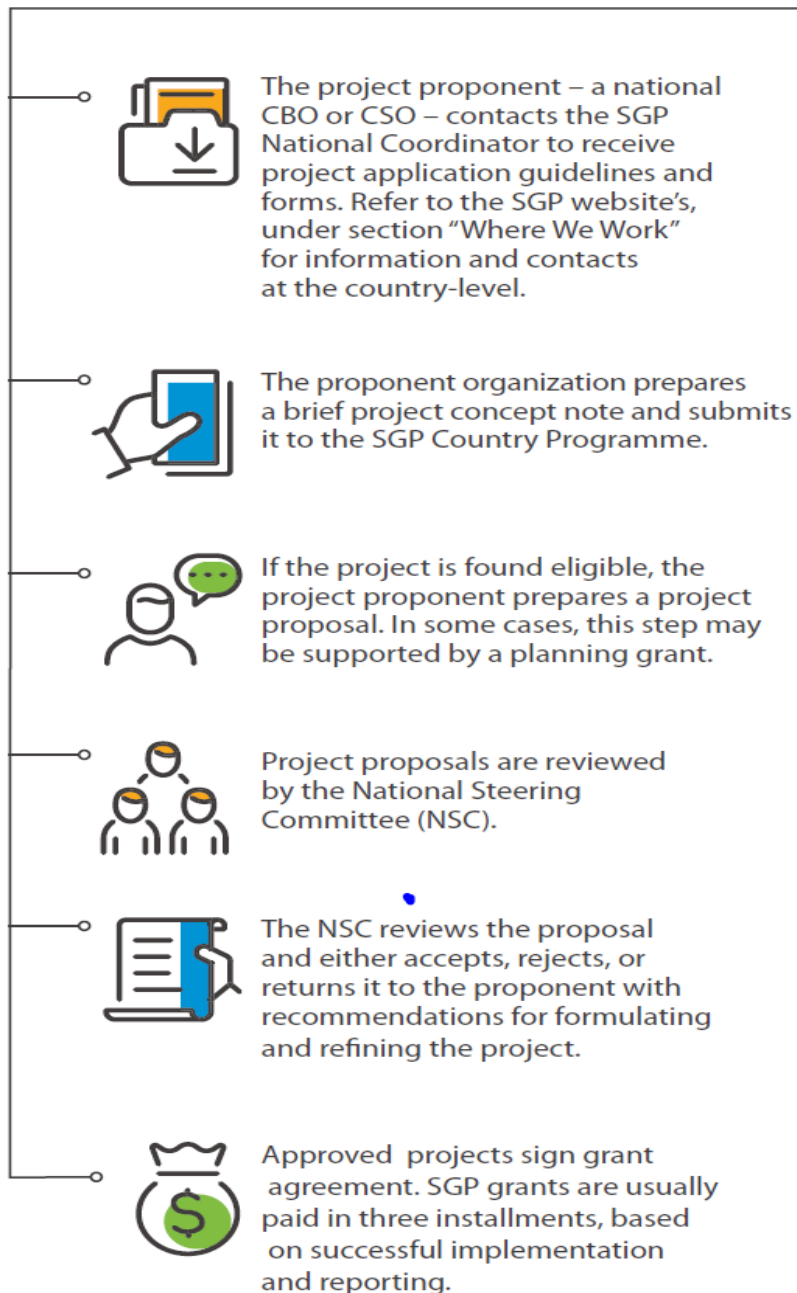


SGP Grants

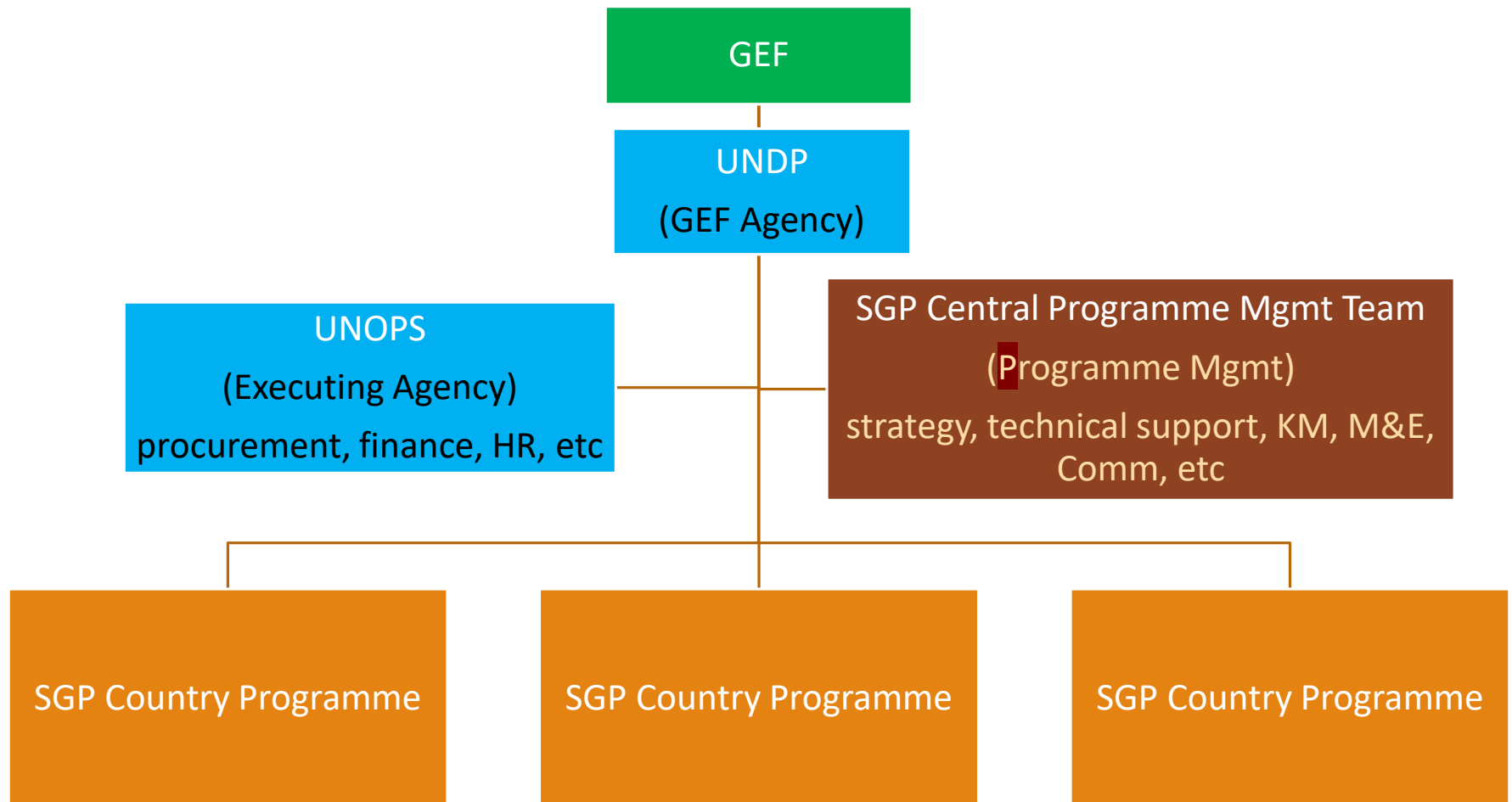
- **Planning Grants:**
up to \$5000
- **Regular Grants:**
up to \$50,000
- **Strategic Grants:**
up to \$150,000
- **Global/Regional
Grants:** \$250k to
500k
- **Innovation
Programme:**
\$100-200K



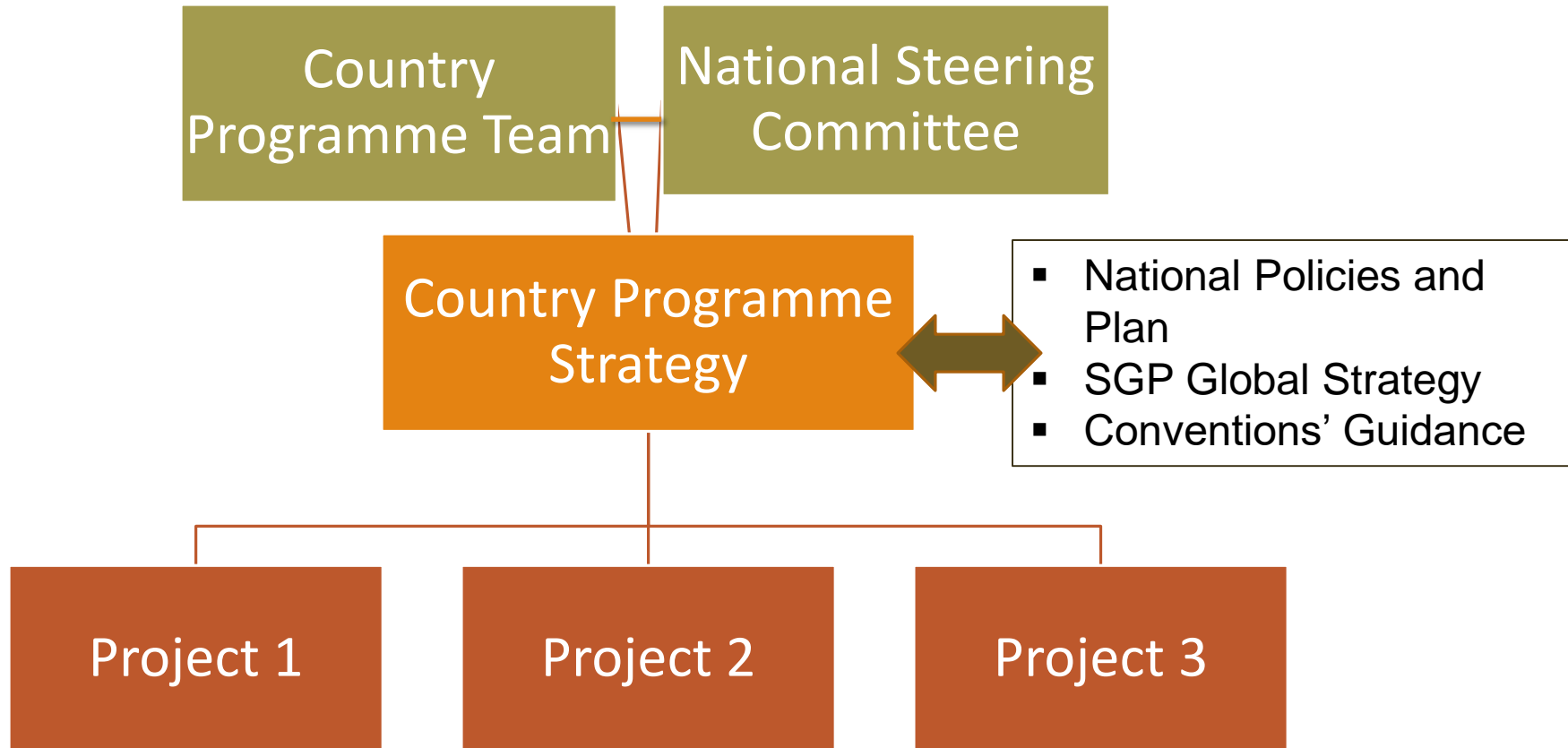
KEY STEPS IN THE APPLICATION PROCESS



SGP Global Structure



SGP Country Structure



SGP Results 2017-2018:



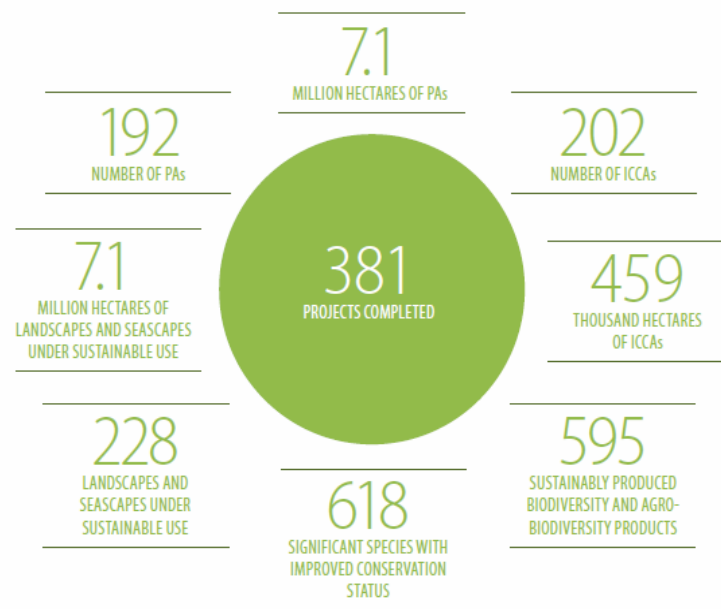
PROGRESS TOWARDS FOCAL AREA OBJECTIVES

BIODIVERSITY

SGP's Biodiversity portfolio continued to support improvements in the sustainability of protected areas (PAs) and indigenous and community conservation areas and territories (ICCAs), and mainstreaming biodiversity conservation and sustainable use through protection and transmission of traditional knowledge and genetic resources.

RESULTS DURING THE REPORTING YEAR

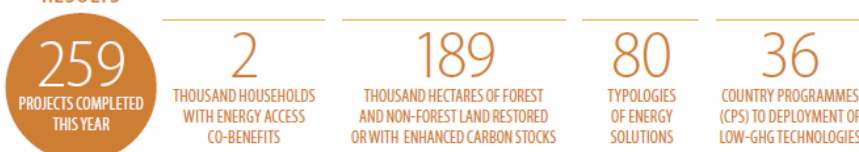
(JULY 1, 2017 - JUNE 30, 2018)



CLIMATE CHANGE

SGP's climate change portfolio continued to support decarbonization and low-carbon energy transformation at the community level through introduction of low-GHG technologies and low-carbon transport initiatives. These technologies included micro-hydro, wind, solar and biomass energy, and results were accomplished through integrated approaches to decarbonization that ensured access of communities to renewable energy.

RESULTS



2018 SGP Results: Grantmaker Plus



GRANTMAKER PLUS

Grantmaker plus strategies were employed by SGP to enhance overall effectiveness of its portfolio. This was done by promoting interventions that build systemic capacity for civil society and community action to address global environmental challenges.

KEY ACTIVITIES UNDERTAKEN BY SGP COUNTRY PROGRAMMES INCLUDE:



67%
PROMOTED PEER-TO-PEER
EXCHANGES



72%
STRENGTHENED GRANTEE
NETWORKS



74%
CONNECTED GRANTEES WITH
GOVERNMENT SERVICES



71%
CONNECTED GRANTEES
WITH NGOs/INGOs



42%
CONNECTED GRANTEES WITH
PRIVATE SECTOR COMPANIES



58
SOUTH-SOUTH EXCHANGES
ACROSS COUNTRIES



70%
CONNECTED GRANTEES WITH THE
ACADEMIA OR RESEARCH CENTERS



128
DIALOGUE PLATFORMS
INITIATED



66%
ORGANIZED TRAINING FOR SGP GRANTEES ON DIFFERENT
SUBJECTS TO IMPROVE PROJECT IMPLEMENTATION



42%
CONNECTED GRANTEES WITH DEVELOPMENT
AGENCIES/PRACTITIONERS

2018 SGP Results: Social Inclusion



SOCIAL INCLUSION

SGP undertakes targeted efforts to support greater social inclusion of marginalized groups, including women, indigenous peoples, youth and persons with disabilities.



93%
PROJECTS COMPLETED
WERE GENDER RESPONSIVE



34%
PROJECTS WERE LED
BY WOMEN



91%
COUNTRIES HAVE A GENDER
FOCAL POINT IN NSC



22%
PROJECTS COMPLETED
WITH INDIGENOUS PEOPLES



40%
COUNTRIES HAVE AN INDIGENOUS
PEOPLES FOCAL POINT IN NSC



39
DISABLED PERSONS ORGANIZATIONS
CONTRIBUTED TO SUSTAINABLE STRATEGIES



1,657
INDIGENOUS LEADERS
WITH IMPROVED CAPACITIES



45%
PROJECTS WITH
YOUTH PARTICIPATION

COMMUNITY ACTION GLOBAL IMPACT

GEF-7 Strategy & Approach

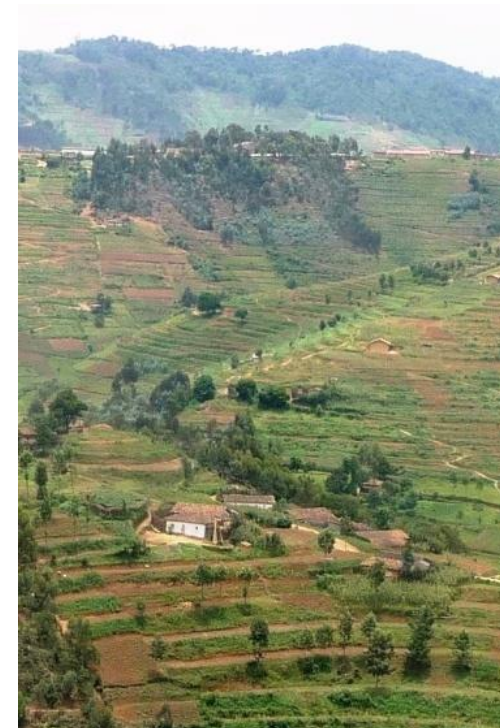
GEF-7 SGP Value Proposition

INCLUSION

INNOVATION

IMPACT

- Strategic platform for community-based actions for synergy, scaling up, and sustainability;
- Incubator of Innovative solutions and risk taker to safeguard the global environment;
- Focus on critical landscapes and seascapes for larger impacts, upscaling, and knowledge sharing.
- Focus on social inclusion in maximizing global environmental benefits



GEF-7: Integrated Strategic Initiatives

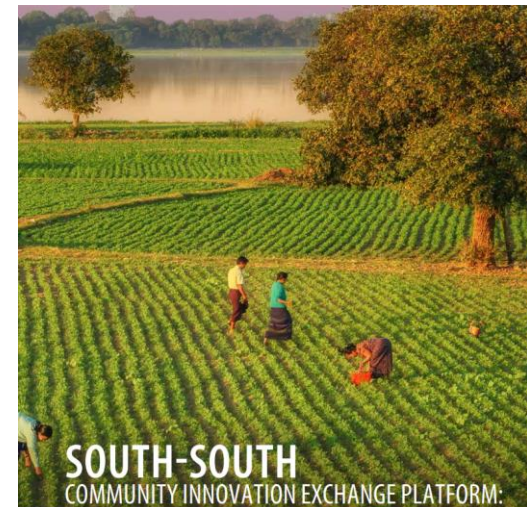


Landscape and Seascape as Overarching Approach:

1. Sustainable Agriculture and Fisheries - Food Security
2. Low-Carbon Energy Access Co-benefits
3. Community-based Threatened Ecosystems and Species Conservation: Land and Water
4. Local to Global Coalitions in Chemicals and Waste Management
5. Catalyzing Sustainable Urban Solutions

Grantmaker Plus Initiatives

- CSO-Government-Private Sector Policy Dialogues
- Social Inclusion – Leaving No One Behind
- Citizen Based Global Knowledge Platforms



Potential New Countries

	Country	LDC/SIDS/Comments
1	Angola	LDC
2	Bangladesh	LDC
3	Myanmar	LDC
4	Sao Tome and Principe	LDC/SIDS
5	Somalia	LDC
6	Sudan	LDC
7	Ewastini	Startup mission completed
8	Bosnia and Herzegovina	
9	Equatorial Guinea	
10	Iraq	
11	Libya	
12	Montenegro	
13	Azerbaijan	
14	Gabon	
15	Turkmenistan	
16	Korea DPR	
17	Russia	
18	South Sudan	
19	Syria	

Access to Core & STAR Resources

SGP CORE Resources:

- Equal access to all countries
- Provision to reallocate at final year if countries are not delivering and have unspent resources.

SGP STAR Resources:

- Eligible and interested countries may allocate STAR resources to participate in GEF-7 SGP
 - **10% of STAR allocation, while not exceeding \$2m for Global Programme.**
 - **Not exceeding \$5m for Upgraded Countries Programme**
- Upgraded countries criteria remains the same as GEF-6.
 - **New UCP – only Malaysia**

Scaling Up Community-based Initiatives: Various Modalities

1) Policies/Projects designed by building on SGP solution/approach

- SGP project experience and approach are reflected and incorporated in national policies and programs
- SGP CSO Government Dialogues, Knowledge fair, South-South Cooperation, etc

2) SGP serving as delivery mechanism of larger projects/programs

- SGP Country Programme can help implement the community component of a larger project that has national, regional and global impacts as relevant.
- Implementation agreement to be made between UNDP, UNOPS, and/or parallel financing.

Partnership



Japan Biodiversity Fund



*Empowered lives.
Resilient nations.*

Supported by:



Federal Ministry for the
Environment, Nature Conservation,
Building and Nuclear Safety



European
Commission

based on a decision of the German Bundestag



NORWEGIAN MINISTRY OF LOCAL GOVERNMENT
AND REGIONAL DEVELOPMENT



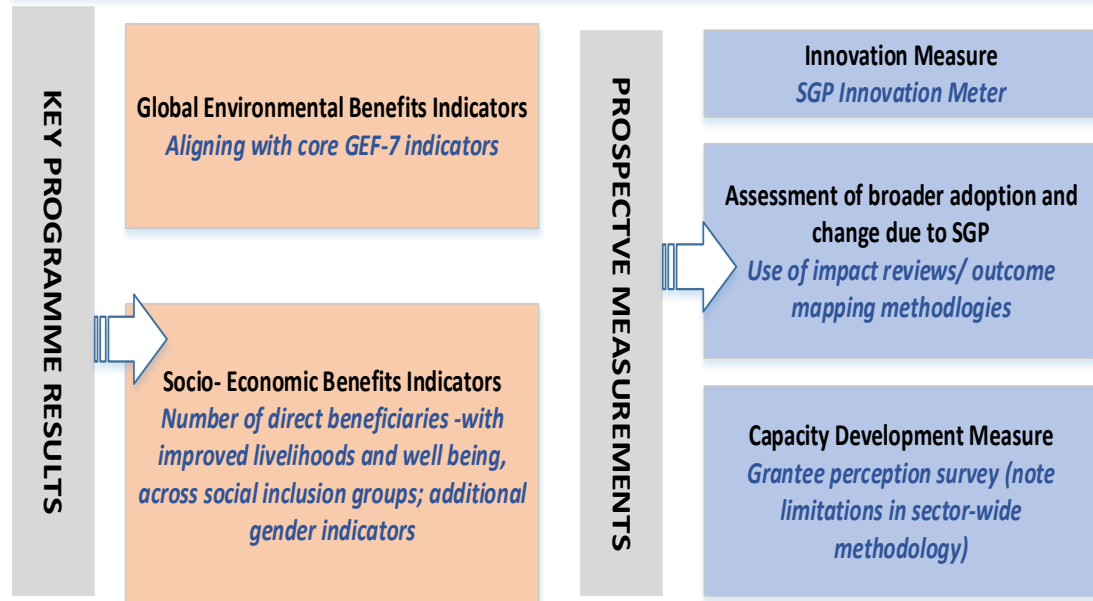
NEW ZEALAND
FOREIGN AFFAIRS & TRADE

UNITED NATIONS
FOUNDATION

SGP Results Measurement

- Global Environmental Results
 - Align with the overall GEF-7 results framework
- Socio-economic results
 - Number of direct beneficiaries with improved livelihoods and wellbeing
 - Social inclusion (targeting women, indigenous groups, youth and persons with disability)

COMPOSITION OF SGP MEASUREMENT SYSTEM



- *SGP will be measuring also on:
Innovation,
Scaling up, and Capacity Development
(refer blue boxes in the graph)*

COMMUNITY ACTION GLOBAL IMPACT

Pacific Status

KEY RESULTS OF PARTICIPATING COUNTRIES (2017-2018)

45 projects were completed in last GEF fiscal year (July 2017- June 2018);

KEY ENVIRONMENTAL RESULTS (July 2017- June 2018)

Biodiversity:

- 22 projects completed; 17 target landscapes/seascapes under improved community conservation and sustainable use;
- 417,082 hectares of target landscapes/seascapes under sustainable use

Climate Change:

- 4 projects completed;
- 75 households achieving energy access co benefits (ecosystem effects, income, health)

Land Degradation:

- 9 projects completed;
- 2362 community members demonstrating improved agricultural, land and water management practices;
- 1297 farmer leaders involved in successful demonstrations of agro-ecological practices;
- 38 farmer organizations/ groups disseminating improved climate smart agro- ecological practices

International Waters:

- 4 projects completed
-

RESULTS FOR PARTICIPATING COUNTRIES

ANNUAL RESULTS (July 2017- June 2018)

-Focus on Social Inclusion:

- 37 projects completed for gender mainstreaming
- 12 projects led by women (e.g. female project coordinator/ led by woman cooperative/ women group)
- 44% of countries incorporated gender considerations in project design
- 43 completed projects with indigenous populations; 224 indigenous leaders with improved capacities;
- 17 completed projects working with youth; 56 youth organizations participating'

- Focus on Grantmaker Plus:

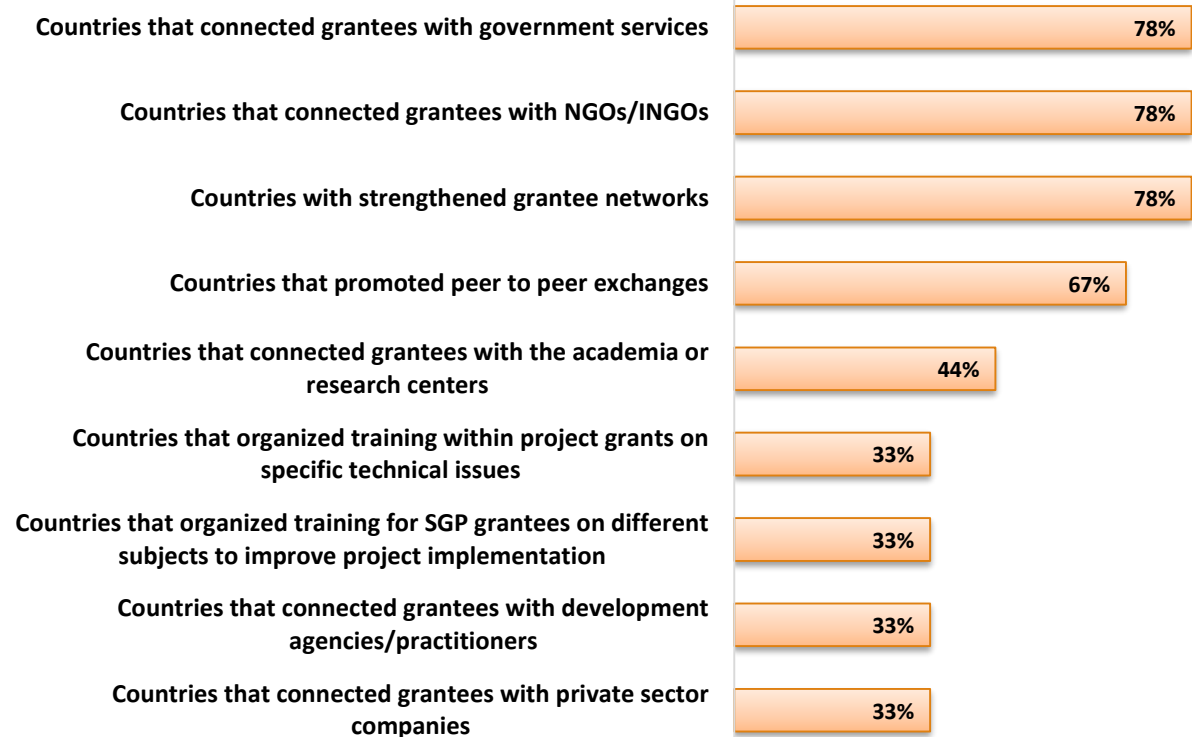
- 5 CSO- Government Dialogues were initiated involving; 857 CSO/ CBO representatives;
-

Capacity building- a key focus

Capacity Development is an integral part of SGP's work (annual results of ECW participating countries only):

- 420 CSOs and CBOs with improved capacities;
- 2,000 people with improved capacities

Capacity Development Strategies used by SGP Pacific Country Programmes



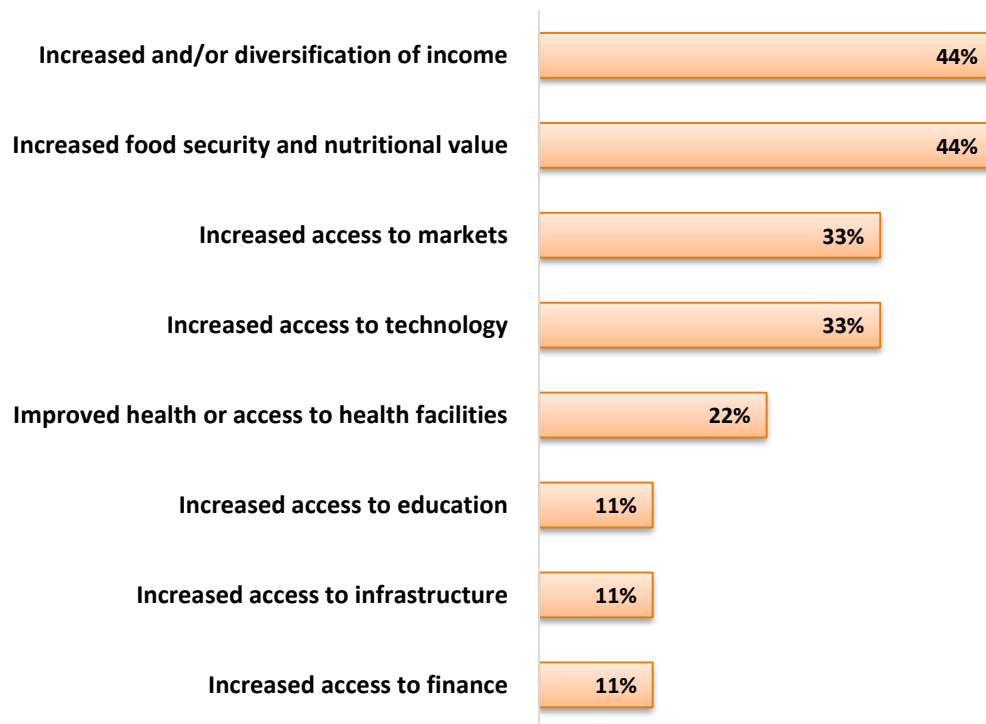
** Percentages based on 13 SGP Pacific programmes that reported this year*

Broader adoption is Improving

Focus on broader adoption of SGP gains was seen (annual results of ECW participating countries only):

- 13 projects were upscaled and replicated;
- 9 projects influenced policy;
- 44 projects improved the livelihood of communities

Strategies employed to improve Livelihoods by SGP Pacific Country Programmes

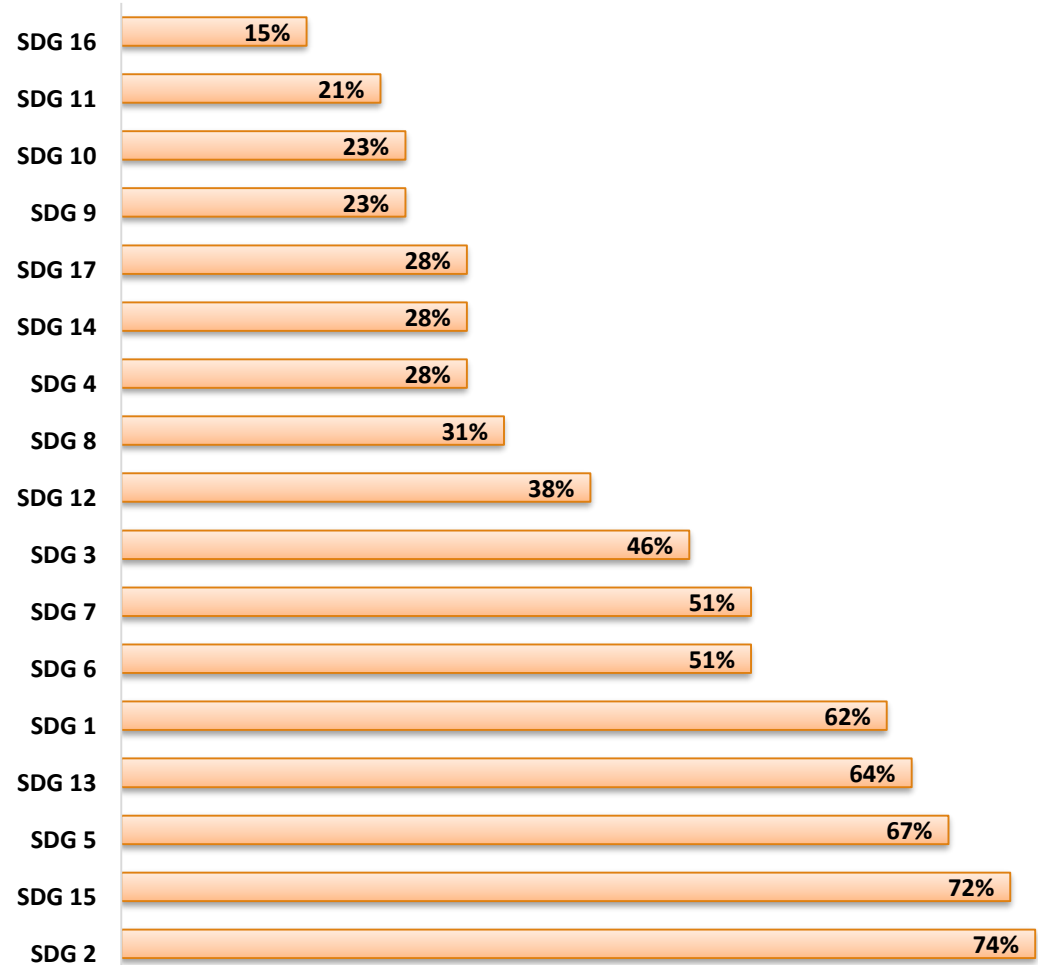


** Percentages based on 13 SGP Pacific programmes that reported this year*

Alignment with SDGs

Aligned to All SDGs. Highest alignment on:

- SDG 2: End hunger, achieve food security and improved nutrition and promote sustainable agriculture
- SDG 15: Protect, restore and promote sustainable use of terrestrial ecosystems, sustainably manage forests, combat desertification, and halt and reverse land degradation and halt biodiversity loss



REGIONAL FINANCIAL OVERVIEW

Country	Year started (*)	GEF SGP Funding		Co-financing			
		Number of Projects	GEF Grant Amount Committed	Project level Co-financing in Cash	Project level Co-financing in Kind	Non-GEF Grant Amount Committed	Total Co-financing
Federated States of Micronesia	2013	27	\$781,735	\$171,979	\$545,386	\$43,750	\$761,115
Fiji sub-region (Fiji, Kiribati, Nauru , Tonga, Tuvalu)	2005	142	\$5,107,270	\$878,581	\$4,049,289	\$1,301,336	\$6,229,206
Marshall Islands	2014	32	\$1,373,178	\$212,720	\$380,000	\$45,000	\$637,720
Micronesia – Sub region (until 2011)	2005	47	\$1,164,675	\$125,394	\$1,594,882	\$550,208	\$2,270,484
Palau	2014	37	\$1,639,988	\$300,407	\$1,255,303	\$100,000	\$1,655,710
Papua New Guinea	1994	218	\$4,317,737	\$1,122,338	\$115,164	\$228,405	\$1,465,907
Samoa sub-region (Cook Islands, Niue, Samoa, Tokelau)	2005	198	\$3,694,211	\$947,555	\$2,105,456	\$1,124,562	\$4,177,573

COMMUNITY ACTION GLOBAL IMPACT

Country Status

SGP Pacific Countries with established National Coordinators (NC)

- Samoa
- Marshall Islands
- Federated States of Micronesia
- Palau
- Niue
- Fiji
- Kiribati
- Papua New Guinea
- Solomon Islands
- Vanuatu
- Timor Leste

- Cook Island
- Tonga
- Nauru

Administered by
National Hosting
Institute (NHI)
CSO's/NGO's

- *Tuvalu (SGP Administration to be setup)*

Kiribati SGP

GEF SGP Funding			Co-financing		
Year Started	No. of Projects	GEF Grant Amount Committed	Project level Co-financing in-Cash	Project Level Co-financing in-Kind	Total Amount Project Financing
2017-2019	21	\$764,870	0	\$1,078,991	\$1,843,861
2019	10	Projects completed satisfactory			

Summary:

Kiribati's 33 coral atolls that are most vulnerable to climate change, with sea level rise, coastal erosion, coral bleaching and storm surges.

Challenges – insufficient freshwater supplies stresses existing underground wells, salt water intrusion (Drought) and contamination from animal and human waste.

Demonstrating community-based climate change adaptation, mitigation and conservation activities. International Waters Biodiversity (21 villages) landscapes and seascapes, managed and implemented through the villages Maneaba system, that governs the village through an elected Committee.

Kiribati SGP (cont'd)

Results:

For 10 village projects successfully completed:

- -in total, 18,800 community members including 6,558 children benefited from projects focus on clean water access and sanitation;
- -200,000 liters rainwater storage capacity has been installed;
- -10 community toilet blocks, each with 4 toilets and 2 shower facilities, with solar pumping of overhead tank water supply and solar lighting;
- Ten (10) 1.5 KW solar electricity systems for the Maneabas provide children with longer hours reading and studying, and more community activities can now take place in the evenings and nights.
- The community toilets also improved the cleanliness and sanitation of the villages and beaches.
- These projects has improved the quality of life, health and welfare of these Kiribati families.

Portfolio in Marshalls Islands

BASIC STATS

Number of Projects

45

Total Amount in Grants

1 858 722 USD

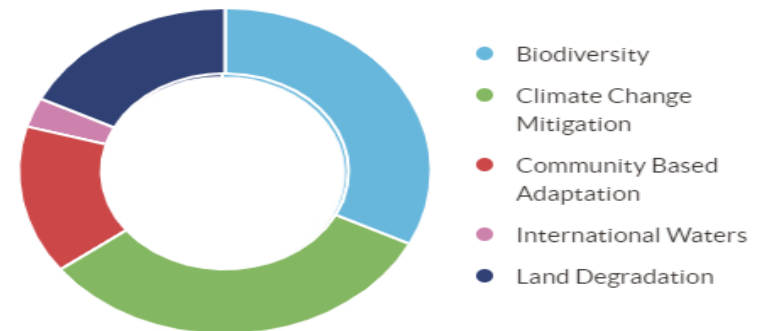
Total Amount of Co-financing

974 720 USD

TOTAL AMOUNTS



COUNTRY PORTFOLIO BY
AREA OF WORK



RMI OP6 Results



1. Capacity development on project management for over **400 community members** (Inclusive of women, youth and PWD).
2. Over **20 formalized partnerships** between local CBOs and Local Government
3. Establishment of **3 revolving funds** for 3 atolls servicing aquaculture farmers
4. **1 Knowledge fair** held in November 2018 between women led CBOs and local government
5. 1 project **designed and implemented by PWD**
6. **1 cultural exhibition** (Bishop Museum, Honolulu) showcasing traditional knowledge products by SGP grantee

GEF SGP Tonga

Year	GEF SGP Funding		Co-Financing			
	Number of Projects	Grant Amount Committed	Project Level Co-financing in cash	Project Level Co-financing in-kind	Non- GEF Amount Committed	Total Co-Financing
Jul 2018 - Jul 2019	16	780,000	0	466,900	0	466,900

2018-2019.

Revival of GEF SGP programme in Tonga with commitment of OP5 780K USD to 16 grantees throughout the 5 island groups of Tongatapu, Eua, Haápai, Vavaú and the Niuas

100+ concept notes submitted to date.

GEF SGP Nauru

National SGP revived: EcoNauru NHI (Aug 2018)

OP5 Allocation (STAR): 960K USD

Concept Notes submitted: 5

Number of projects NSC endorsement: 3 (*Total - 180K USD*)

GEF Focal Areas: BD/CC/LD (*multi focal areas*)

Beneficiaries: 6 District communities / 1 NGO

Remaining funds: Strategic initiatives (*replications of success demonstration projects*)

OP6 Highlights

- 14 Projects
- USD 517600 committed
- 2 projects completed

Co-financing at country level India Brazil South Africa Fund

- Project budget USD 224,213
- 4 projects



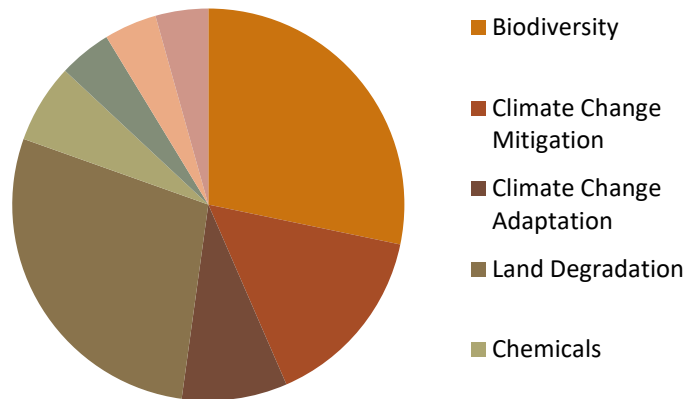
Example: Loving Islands' Matuku Island Organic Farming Project (Phase 2)

- 1 Organic processing facility completed.
- 7 communities provided with equipment for Organic Virgin coconut Oil production
- 111 island residents trained and registered as organic producers
- Over FJ15,000 direct community income generated through sale of organic products
- 66% of organic producers are female
- 2 new community microenterprise established



Country: Palau

Palau SGP projects by focal Areas



Established	2013
# of projects	46
Total amt. allocated (GEF5 STAR & GEF 5 CORE)	\$ 1,960,000 USD
Total amt. committed	\$1,694,355 USD
Total amt. cash co-financing	\$147,100 USD
Total amt. in-kind co-financing	\$896,226 USD
Total co-financing	\$1,043, 326 USD
Total amt. allocated (GEF6 STAR & CORE)	\$553,000 USD
Total amt. committed	\$50,000 USD
Cash co-financing	\$0
In-kind co-financing	\$20,500 USD

Promoting Social Inclusion (cumulative results):

641 people reached

296 women, 304 men reached

3 projects implemented by ethnic cultural minority (out-lying States)

12 women led projects

192 youth reached

1 youth driven project

2 schools



Project results 2018 – 2019

1. ROP/SGP/OP5/Y3/STAR/2013/03 - Belau National Museum (Biodiversity)

- 1 bird species with maintained or improved conservation status (Megapode relocation program with KS Rangers)
- 220 native and endemic plant species with maintained conservation status (30 labels in Botanical Garden; propagation of over 100 seedlings)
- Hectares of protected areas influenced: a) 500 Hectares (Lake Ngardok); b) 1,000 Hectares (Medal Ngediull); c) 200 Hectares (Ngermeskang)
- Hectares of significant ecosystems with improved conservation status: a) 1,0000 square km (RISL); b) BNM Botanical Garden (100 square meters)
- 1 consultative mechanism established – Palau Bird Records Committee
- Reports produced – 1 RISL Bird Diversity Informatics Policy Implementation Report; 1 Training Module – Koror State Tour Guide Certification Manual; 1 Palau Megapode Conservation Action Plan; State of Palau's Birds Report (2014 – 2019)
- Number of people trained: approximately 30: a) Lake Ngardok Ramsar Wetland site in Melekeok (3 males and 3 females); b) Ngermeskang IBA in Ngeremlengui (5 males); c) Medal Ngediull MPA site in Airai (5 males). Koror State RISL (9 males and 2 females); c) Ngatpang and Ngardmau (4 males and 1 female).

2. PLW/SGP/OP5/Y5/CORE/2016/02 - Mindszenty High School (Climate Change Mitigation)

- Tonnes of CO2 avoided by implementing low carbon technologies: Renewable energy measures since Sept. 2017 – Sept. 2018: 16,433 kg of CO2
- More than 100 community members (students, staff, and users of MHS facilities) benefiting from low-GHG technologies
- Total value of energy or technology services provided (USD equivalent): 24,050 kWh
- 2 national policies influenced (national energy policy and climate change policy)
- 41 people trained on: monitoring and evaluation by calculating carbon off-set (36 students, 5 faculty)

3. PLW/SGP/OP5/Y5/CORE/2016/04 - Belau Tourism Association (planning grant)

- Engagement with 3 State governments (local government) stake holders on enhancement of cultural/historical sites through a biodiversity lens
- 3 community groups consulted (3 males and 3 females) represented by officers
- 1 agency engaged in the ethno-botanical aspects of historical sites.

SAMOA Sub Region – Niue, Samoa & Tokelau

GEF SGP Funding			Co-financing		
Year Started	No. of Projects	GEF Grant Amount Committed	Project level Co-financing in-Cash	Project Level Co-financing in-Kind	Total Amount Project Financing
2017-2019	48	\$1,972,467	250,000	\$1,500,250	\$3,722,717
2017 - 2019	37	Projects completed satisfactory			

Summary:

SGP Samoa is a sub-regional programme that covers Niue, Samoa and Tokelau. Since joining in 2003, over US\$5 million has been committed to more than 200 projects covering a variety of focal areas – biodiversity, climate change adaptation & mitigation, international waters, land degradation, chemicals and waste management, capacity development.

These islands are most vulnerable to climate change impacts, with sea level rise, coastal erosion, coral bleaching, and storm surges.

A major challenge on the islands is natural disasters such as cyclones, flooding, droughts, land degradation, soil erosion, salt water intrusion, and waste management.

SGP SAMOA (cont'd)

Results:

- ❖ More than 100,000 community members including children, people with special needs, women, youth, benefited from a variety of GEF focal areas.
- ❖ 3 schools for children with special needs completed their agro-ecology and waste management projects.
- ❖ 5 village communities with freshwater spring pools rehabilitation projects have saved on water bills and used these pools as tourist attractions.
- ❖ 4 community waste management projects improved the cleanliness of the villages and established village laws to fine offenders.
- ❖ Successful project on marine conservation and freshwater rehabilitation was showcased during the SAMOA Pathway mid term review Nov 2018.
- ❖ YCAN Samoa first Pacific Youth Group to win Ramsar Convention award for Young Wetlands Champions <http://www.ws.undp.org/content/samoa/en/home/presscenter/pressreleases/2018/05/03/top-award-granted-to-the-youth-climate-action-network-of-samoa.html>
- ❖ These projects have greatly improved the quality of life, health, and welfare of the most vulnerable communities in these islands.



Side-event SAMOA Pathway by UNDP-GEF Small Grants and partners 1 Nov 2018

THANK YOU

Contacts:

Yoko Watanabe, Global Manager (yoko.watanabe@undp.org)

Charles Nyandiga, Regional Focal Point (Charles.Nyandiga@undp.org)

National Coordinators (www.sgp.undp.org/where-we-work-153.html)
