



# GEF SMALL GRANTS PROGRAMME OVERVIEW, GEF-7 STRATEGY & REGIONAL STATUS

## GEF ECW IN LUANDA, ANGOLA 2019

# SGP Overview

---

# Overview

- Local solutions to global environmental problems
- Supports community-based initiatives and actions
- Since 1992, GEF Corporate Program, implemented by UNDP



## KEY FACTS



21,600  
PROJECTS

on global environmental  
issues.



UP TO  
\$50,000  
PER GRANT

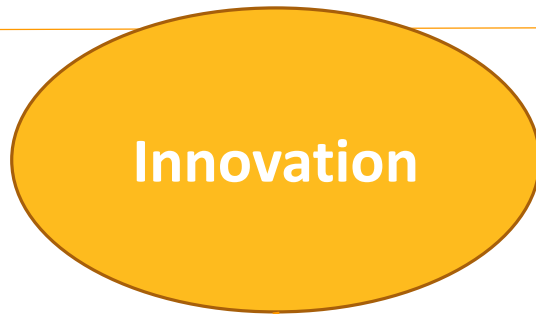
directly to CSOs and local  
communities for innovative and  
community-driven ideas that can  
then be replicated and scaled up.



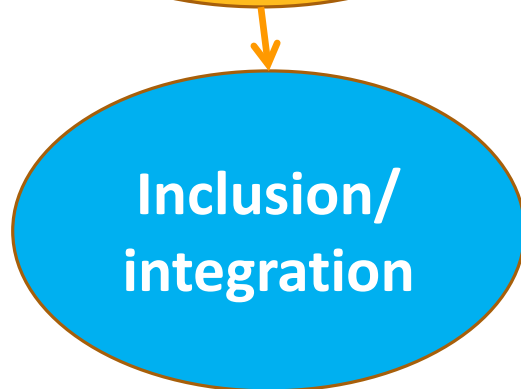
US\$582  
MILLION

in total Grants and equal  
amount of cofinance.

# SGP Approach



Technologies, tools &  
management arrangements



Partnerships, connections and  
networking



Impact: policy influence,  
diffusion of practices

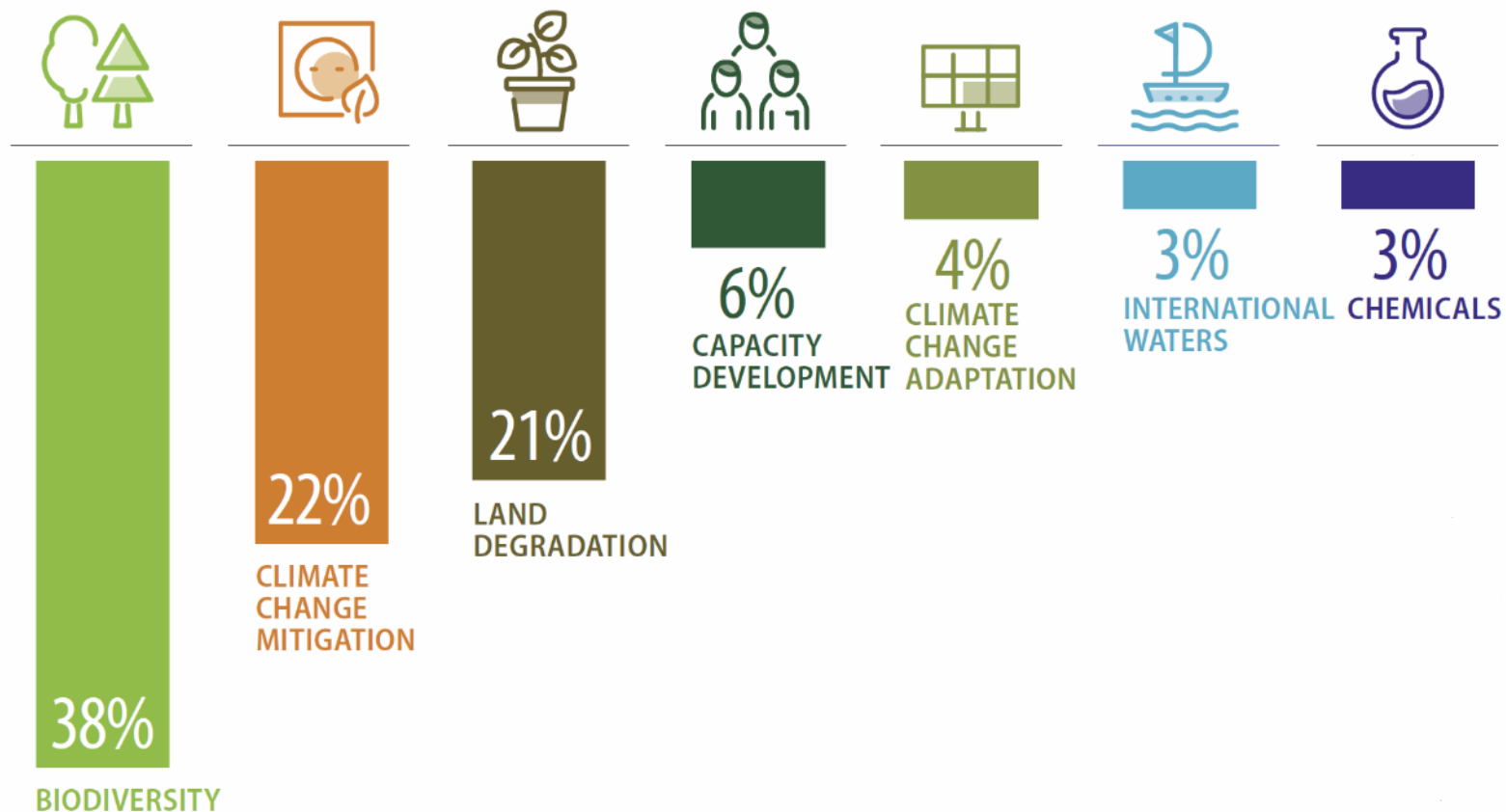
# Where we work





# What we do

## FOCAL AREA DISTRIBUTION

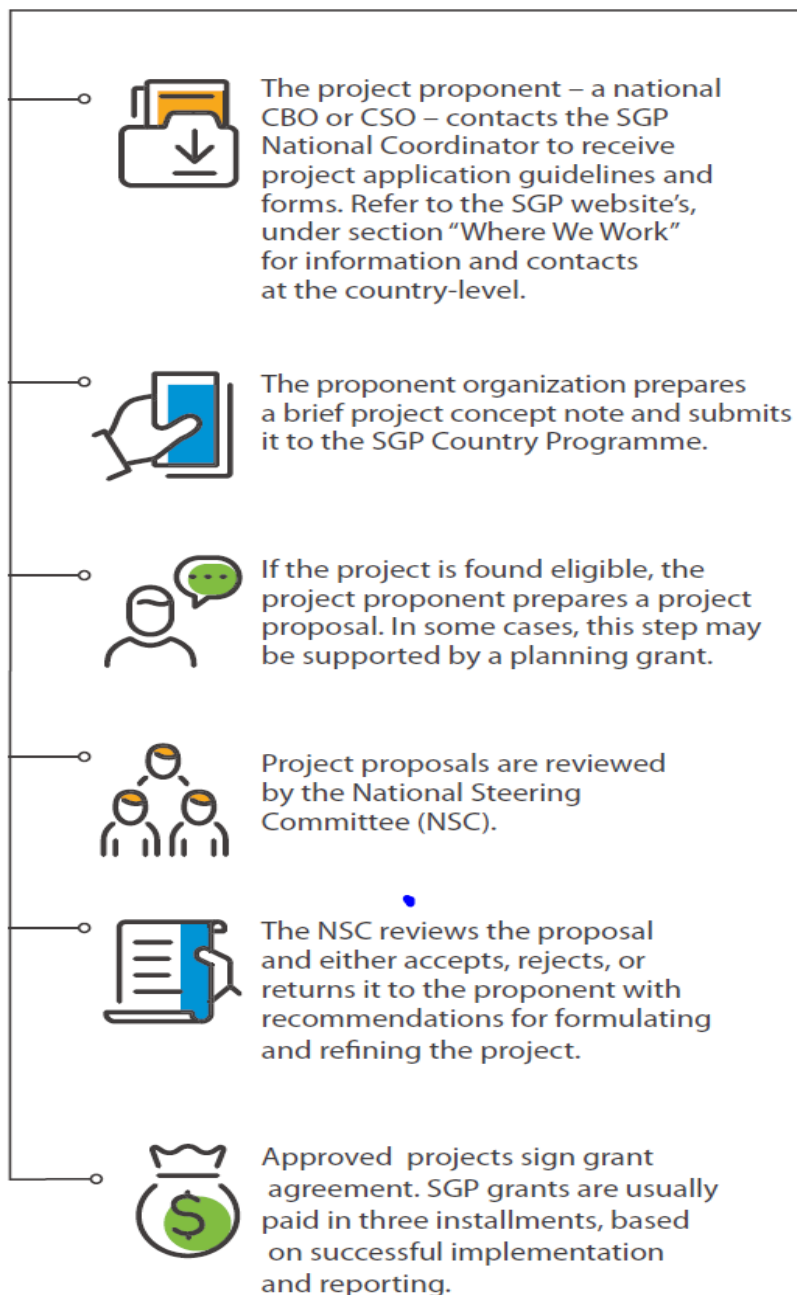


# SGP Grants

- **Planning Grants:**  
up to \$5000
- **Regular Grants:**  
up to \$50,000
- **Strategic Grants:**  
up to \$150,000
- **Global/Regional  
Grants:** \$250k to  
500k
- **Innovation  
Programme:**  
\$100-200K

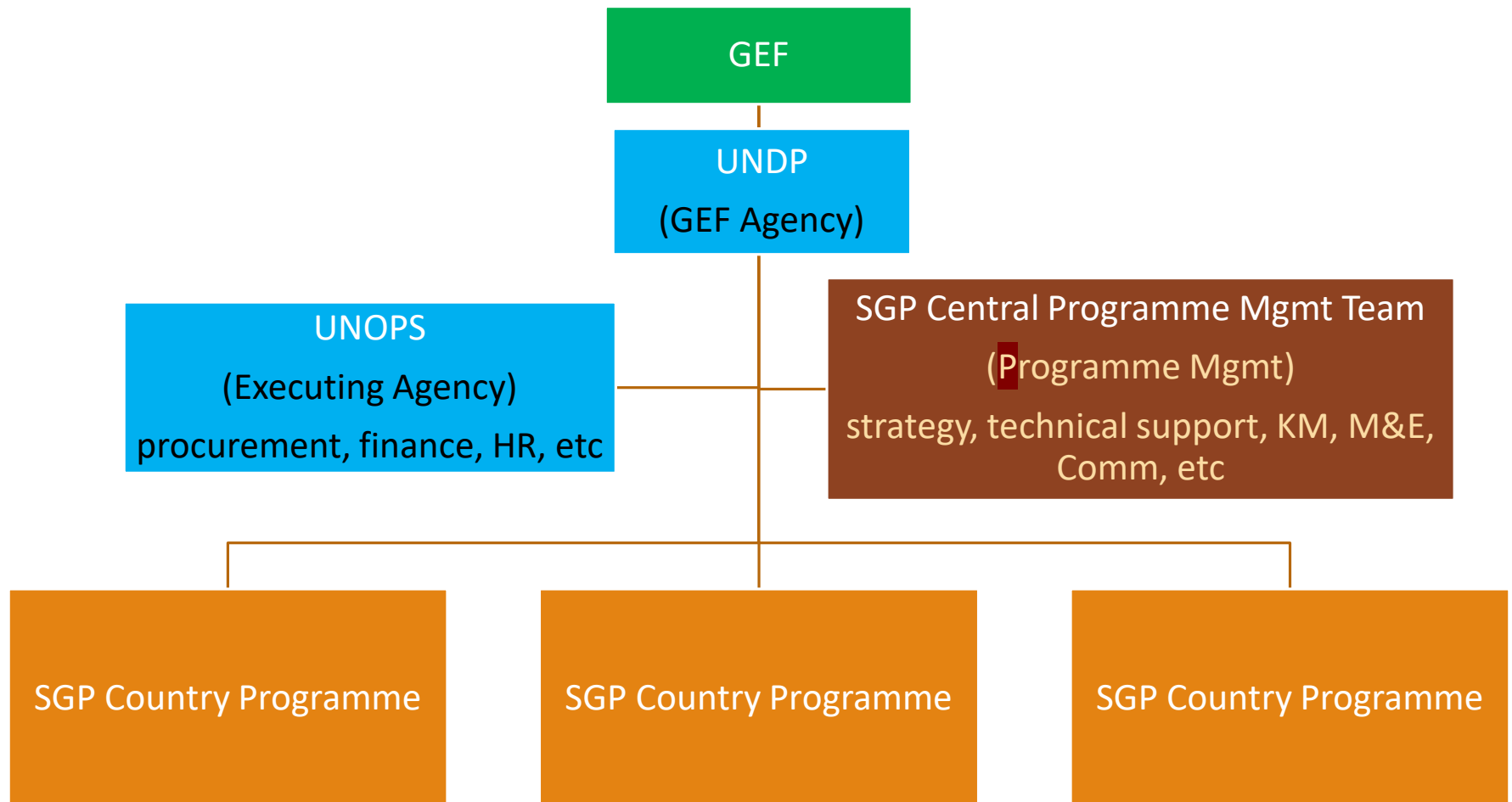


## KEY STEPS IN THE APPLICATION PROCESS

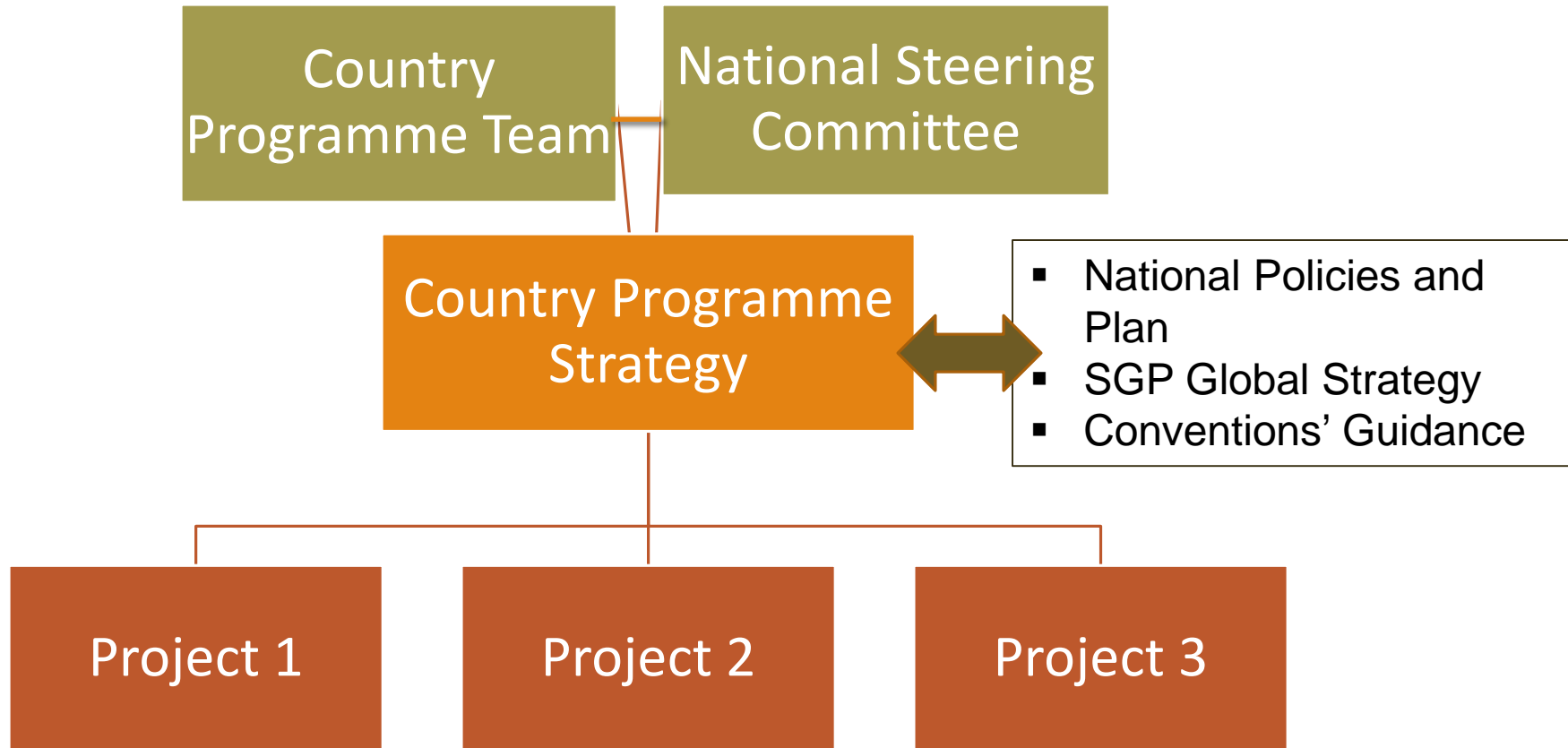




# SGP Global Structure



# SGP Country Structure



# SGP Results 2017-2018: Biodiversity and Climate Change

**SGP** The GEF  
Small Grants  
Programme

**25**  
YEARS



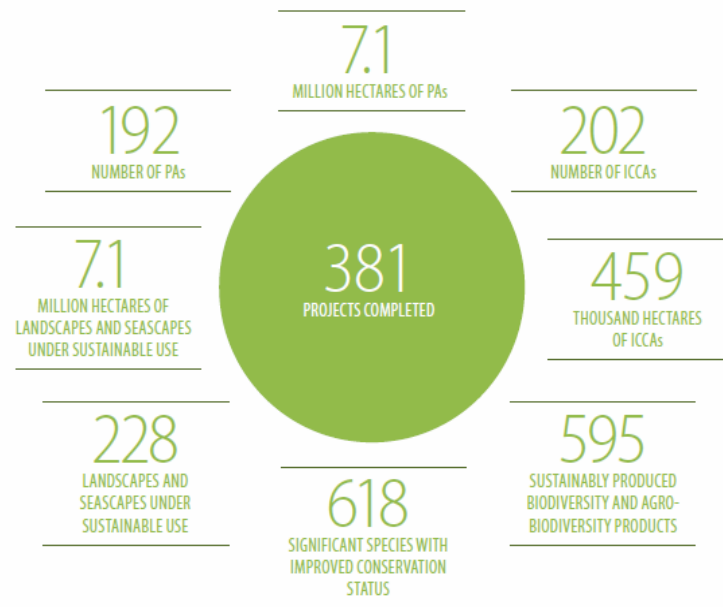
## PROGRESS TOWARDS FOCAL AREA OBJECTIVES

### BIODIVERSITY

SGP's Biodiversity portfolio continued to support improvements in the sustainability of protected areas (PAs) and indigenous and community conservation areas and territories (ICCAs), and mainstreaming biodiversity conservation and sustainable use through protection and transmission of traditional knowledge and genetic resources.

### RESULTS DURING THE REPORTING YEAR

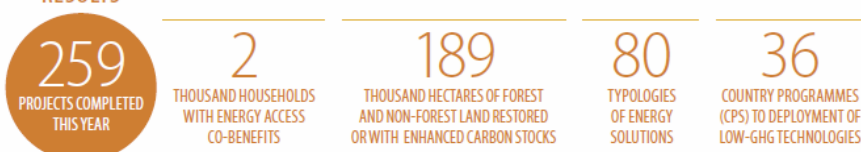
(JULY 1, 2017 - JUNE 30, 2018)



### CLIMATE CHANGE

SGP's climate change portfolio continued to support decarbonization and low-carbon energy transformation at the community level through introduction of low-GHG technologies and low-carbon transport initiatives. These technologies included micro-hydro, wind, solar and biomass energy, and results were accomplished through integrated approaches to decarbonization that ensured access of communities to renewable energy.

### RESULTS



# SGP Results 2017-2018: International Waters and Land Degradation



## INTERNATIONAL WATERS

SGP's international waters portfolio supports sustainable management of transboundary waterbodies through regionally connected community-based activities.

### RESULTS

**27**  
PROJECTS COMPLETED  
THIS YEAR

**13**  
NUMBER OF  
SEASCAPES AND INLAND  
FRESHWATER LANDSCAPES  
SUPPORTED

**79**  
TONS OF  
LAND-BASED  
POLLUTION  
REDUCED

**37**  
THOUSAND HECTARES OF  
MARINE AND COASTAL  
AREAS UNDER SUSTAINABLE  
MANAGEMENT

**26**  
THOUSAND HECTARES  
OF SEASCAPES  
UNDER SUSTAINABLE  
MANAGEMENT



## LAND DEGRADATION

SGP's sustainable land management portfolio supports reversal and prevention of desertification and land degradation, while mitigating the effects of drought. Activities supported targeted rural communities who are highly dependent on agro-ecosystems and forest ecosystems for their livelihoods.

### RESULTS

**207**  
PROJECTS COMPLETED  
THIS YEAR

**25**  
THOUSAND  
COMMUNITY MEMBERS WITH  
IMPROVED ACTIONS  
AND PRACTICES

**174**  
THOUSAND  
COMMUNITY MEMBERS  
DEMONSTRATING  
SUSTAINABLE  
LAND MANAGEMENT

**56**  
THOUSAND HECTARES  
OF LAND BROUGHT  
UNDER IMPROVED  
MANAGEMENT  
PRACTICES

**6,146**  
FARMER  
LEADERS  
DEMONSTRATING  
OF AGRO-ECOLOGICAL  
PRACTICE

**999**  
FARMER NETWORKS  
DISSEMINATING  
IMPROVED  
AGRO-ECOLOGY  
PRACTICES

# SGP Results 2017-2018: Chemicals/waste



## CHEMICALS AND WASTE

SGP's chemicals and waste management portfolio supports reduction and elimination of the release of harmful chemicals into the environment.

### RESULTS

**36**  
PROJECTS COMPLETED  
THIS YEAR

**3**

MERCURY  
MANAGEMENT  
PROJECTS  
COMPLETED

**60**

THOUSAND  
KILOGRAMS  
OF PESTICIDES  
AVOIDED

**75**

THOUSAND  
KILOGRAMS OF SOLID  
WASTE REDUCED

**26**

THOUSAND  
KILOGRAMS OF  
E-WASTE COLLECTED  
OR RECYCLED

**22**

THOUSAND  
KILOGRAMS  
HARMFUL CHEMICALS  
AVOIDED



# 2018 SGP Results: Grantmaker Plus



## GRANTMAKER PLUS

Grantmaker plus strategies were employed by SGP to enhance overall effectiveness of its portfolio. This was done by promoting interventions that build systemic capacity for civil society and community action to address global environmental challenges.

KEY ACTIVITIES UNDERTAKEN BY SGP COUNTRY PROGRAMMES INCLUDE:



**67%**  
PROMOTED PEER-TO-PEER  
EXCHANGES



**72%**  
STRENGTHENED GRANTEE  
NETWORKS



**74%**  
CONNECTED GRANTEES WITH  
GOVERNMENT SERVICES



**71%**  
CONNECTED GRANTEES  
WITH NGOS/INGOs



**42%**  
CONNECTED GRANTEES WITH  
PRIVATE SECTOR COMPANIES



**58**  
SOUTH- SOUTH EXCHANGES  
ACROSS COUNTRIES



**70%**  
CONNECTED GRANTEES WITH THE  
ACADEMIA OR RESEARCH CENTERS



**128**  
DIALOGUE PLATFORMS  
INITIATED



**66%**  
ORGANIZED TRAINING FOR SGP GRANTEES ON DIFFERENT  
SUBJECTS TO IMPROVE PROJECT IMPLEMENTATION



**42%**  
CONNECTED GRANTEES WITH DEVELOPMENT  
AGENCIES/PRACTITIONERS

# 2018 SGP Results: Social Inclusion



## SOCIAL INCLUSION

SGP undertakes targeted efforts to support greater social inclusion of marginalized groups, including women, indigenous peoples, youth and persons with disabilities.



93%  
PROJECTS COMPLETED  
WERE GENDER RESPONSIVE



34%  
PROJECTS WERE LED  
BY WOMEN



91%  
COUNTRIES HAVE A GENDER  
FOCAL POINT IN NSC



22%  
PROJECTS COMPLETED  
WITH INDIGENOUS PEOPLES



40%  
COUNTRIES HAVE AN INDIGENOUS  
PEOPLES FOCAL POINT IN NSC



39  
DISABLED PERSONS ORGANIZATIONS  
CONTRIBUTED TO SUSTAINABLE STRATEGIES



1,657  
INDIGENOUS LEADERS  
WITH IMPROVED CAPACITIES



45%  
PROJECTS WITH  
YOUTH PARTICIPATION

# GEF-7 Strategy & Approach

---

# GEF-7 SGP Value Proposition

## INCLUSION

## INNOVATION

## IMPACT

- Strategic platform for community-based actions for synergy, scaling up, and sustainability;
- Incubator of Innovative solutions and risk taker to safeguard the global environment;
- Focus on critical landscapes and seascapes for larger impacts, upscaling, and knowledge sharing.
- Focus on social inclusion in maximizing global environmental benefits



# GEF-7: Integrated Strategic Initiatives



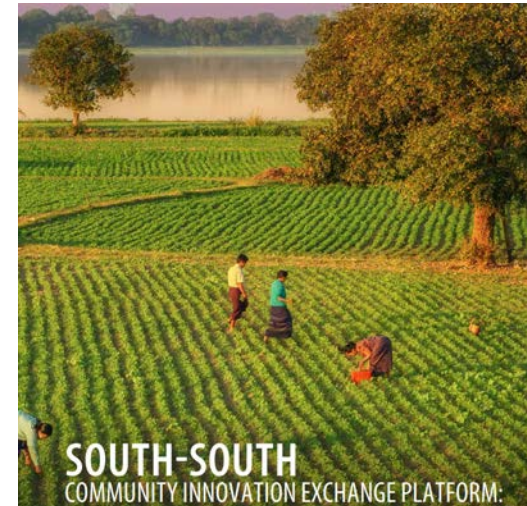
## Landscape and Seascape as Overarching Approach:

1. Sustainable Agriculture and Fisheries - Food Security
2. Low-Carbon Energy Access Co-benefits
3. Community-based Threatened Ecosystems and Species Conservation: Land and Water
4. Local to Global Coalitions in Chemicals and Waste Management
5. Catalyzing Sustainable Urban Solutions



# Grantmaker Plus Initiatives

- CSO-Government-Private Sector Policy Dialogues
- Social Inclusion – Leaving No One Behind
- Citizen Based Global Knowledge Platforms



# Potential New Countries

	Country	LDC/SIDS/Comments
1	Angola	LDC
2	Bangladesh	LDC
3	Myanmar	LDC
4	Sao Tome and Principe	LDC/SIDS
5	Somalia	LDC
6	Sudan	LDC
7	Ewastini	Startup mission completed
8	Bosnia and Herzegovina	
9	Equatorial Guinea	
10	Iraq	
11	Libya	
12	Montenegro	
13	Azerbaijan	
14	Gabon	
15	Turkmenistan	
16	Korea DPR	
17	Russia	
18	South Sudan	
19	Syria	

## Access to Core & STAR Resources

---

### SGP CORE Resources:

- Equal access to all countries
- Provision to reallocate at final year if countries are not delivering and have unspent resources.

### SGP STAR Resources:

- Eligible and interested countries may allocate STAR resources to participate in GEF-7 SGP
  - **10% of STAR allocation, while not exceeding \$2m for Global Programme.**
  - **Not exceeding \$5m for Upgraded Countries Programme**
- Upgraded countries criteria remains the same as GEF-6.
  - **New UCP – only Malaysia**

# Scaling Up Community-based Initiatives: Various Modalities

## 1) Policies/Projects designed by building on SGP solution/approach

- SGP project experience and approach are reflected and incorporated in national policies and programs
- SGP CSO Government Dialogues, Knowledge fair, South-South Cooperation, etc

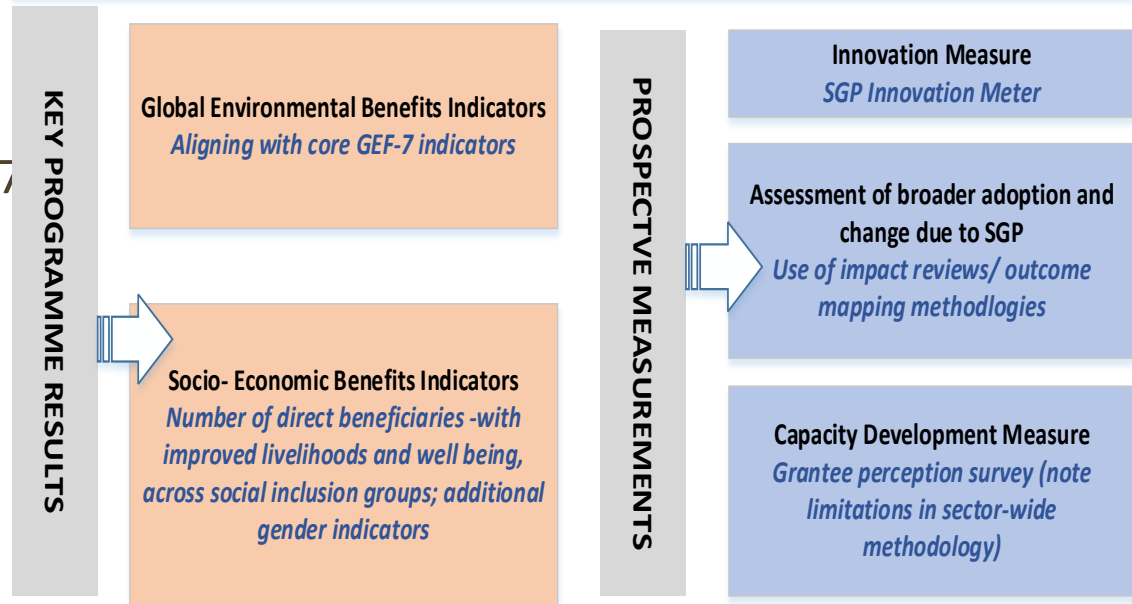
## 2) SGP serving as delivery mechanism of larger projects/programs

- SGP Country Programme can help implement the community component of a larger project that has national, regional and global impacts as relevant.
- Implementation agreement to be made between UNDP, UNOPS, and/or parallel financing.

# SGP Results Measurement

- Global Environmental Results
  - Align with the overall GEF-7 results framework
- Socio-economic results
  - Number of direct beneficiaries with improved livelihoods and wellbeing
  - Social inclusion (targeting women, indigenous groups, youth and persons with disability)

## COMPOSITION OF SGP MEASUREMENT SYSTEM



- *SGP will be measuring also on:  
Innovation,  
Scaling up, and Capacity Development  
(refer blue boxes in the graph)*



# Partnership



Japan Biodiversity Fund



*Empowered lives.  
Resilient nations.*

Supported by:



Federal Ministry for the  
Environment, Nature Conservation,  
Building and Nuclear Safety



European  
Commission

based on a decision of the German Bundestag



NORWEGIAN MINISTRY OF LOCAL GOVERNMENT  
AND REGIONAL DEVELOPMENT



**NEW ZEALAND**  
FOREIGN AFFAIRS & TRADE

UNITED NATIONS  
FOUNDATION

# Status of Southern Africa Region

---

# KEY RESULTS OF PARTICIPATING COUNTRIES (2017-2018)

---

45 projects were completed in last GEF fiscal year (July 2017- June 2018);

## KEY ENVIRONMENTAL RESULTS (July 2017- June 2018)

### Biodiversity:

- 22 projects completed; 17 target landscapes/seascapes under improved community conservation and sustainable use;
- 417,082 hectares of target landscapes/seascapes under sustainable use

### Climate Change:

- 4 projects completed;
- 75 households achieving energy access co benefits (ecosystem effects, income, health)

### Land Degradation:

- 9 projects completed;
- 2362 community members demonstrating improved agricultural, land and water management practices;
- 1297 farmer leaders involved in successful demonstrations of agro-ecological practices;
- 38 farmer organizations/ groups disseminating improved climate smart agro- ecological practices

### International Waters:

- 4 projects completed
-

# RESULTS FOR PARTICIPATING COUNTRIES

---

## ANNUAL RESULTS (July 2017- June 2018)

### -Focus on Social Inclusion:

- 37 projects completed for gender mainstreaming
- 12 projects led by women (e.g. female project coordinator/ led by woman cooperative/ women group)
- 44% of countries incorporated gender considerations in project design
- 43 completed projects with indigenous populations; 224 indigenous leaders with improved capacities;
- 17 completed projects working with youth; 56 youth organizations participating'

### - Focus on Grantmaker Plus:

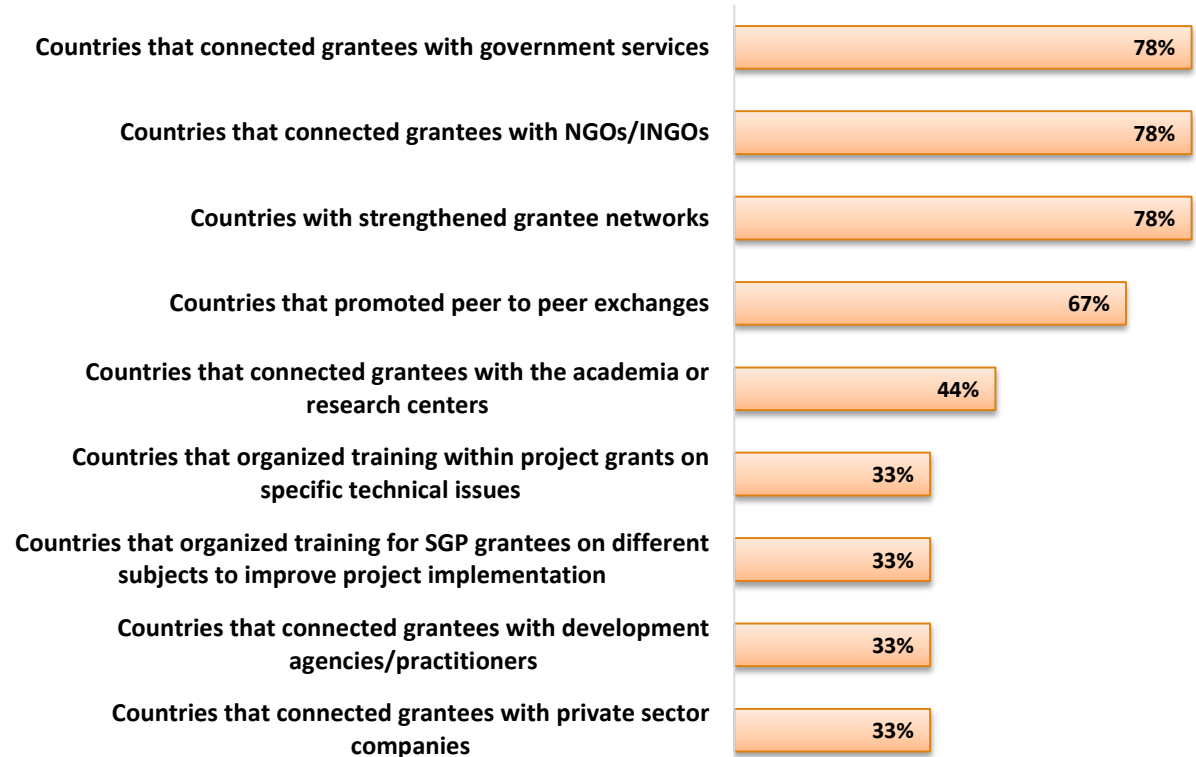
- 5 CSO- Government Dialogues were initiated involving; 857 CSO/ CBO representatives;
-

# Capacity building- a key focus

Capacity Development is an integral part of SGP's work (annual results of ECW participating countries only):

- 420 CSOs and CBOs with improved capacities;
- 2,000 people with improved capacities

## Capacity Development Strategies used by SGP Pacific Country Programmes



*\* Percentages based on 13 SGP Pacific programmes that reported this year*

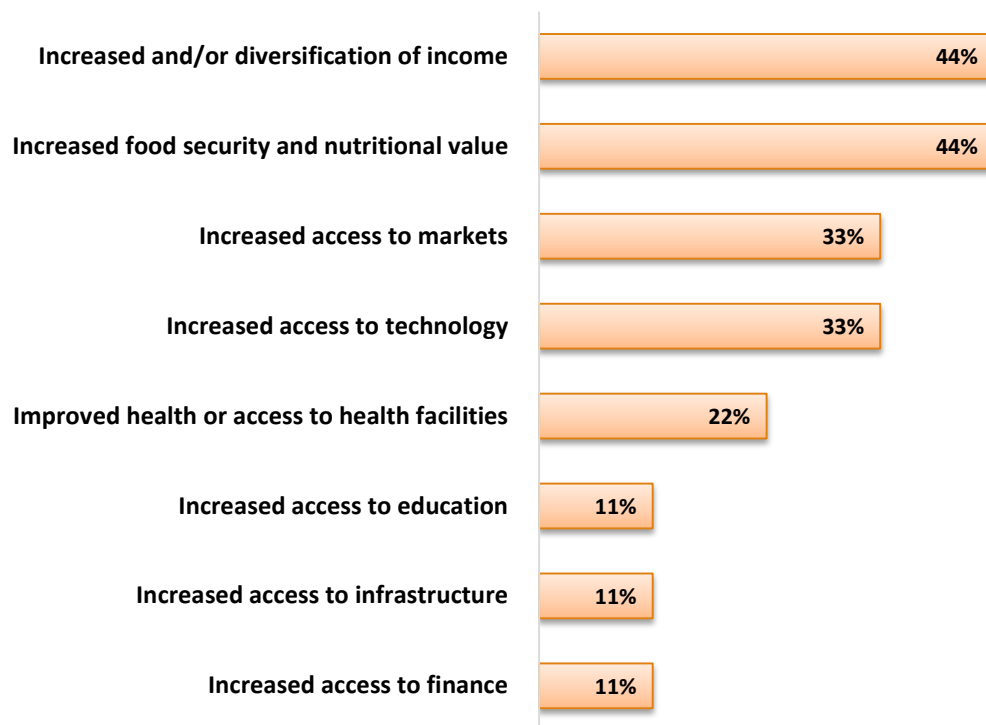


# Broader adoption is Improving

Focus on broader adoption of SGP gains was seen (annual results of ECW participating countries only):

- 13 projects were upscaled and replicated;
- 9 projects influenced policy;
- 44 projects improved the livelihood of communities

## Strategies employed to improve Livelihoods by SGP Pacific Country Programmes

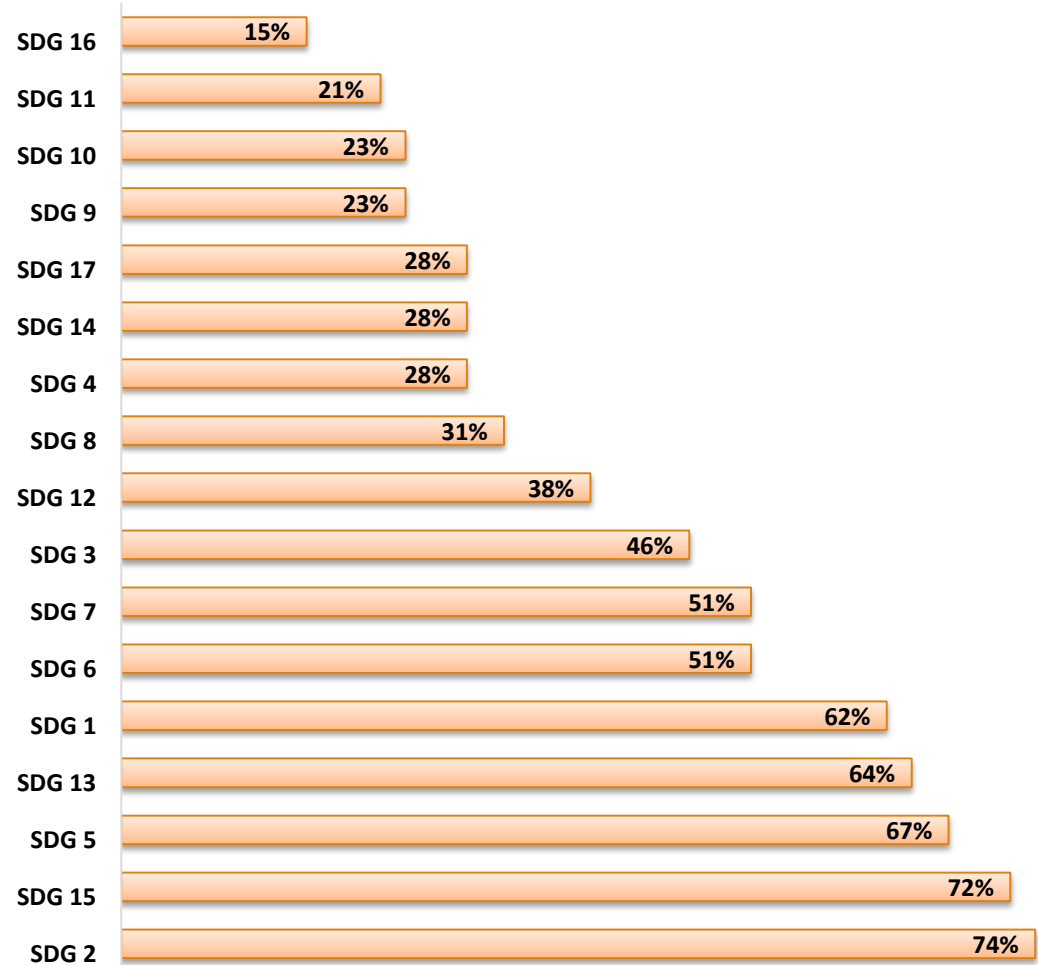


*\* Percentages based on 13 SGP Pacific programmes that reported this year*

# Alignment with SDGs

Aligned to All SDGs. Highest alignment on:

- SDG 2: End hunger, achieve food security and improved nutrition and promote sustainable agriculture
- SDG 15: Protect, restore and promote sustainable use of terrestrial ecosystems, sustainably manage forests, combat desertification, and halt and reverse land degradation and halt biodiversity loss



# GEF SGP Regional Overview

Country	Year started (*)	GEF SGP Funding		Co-financing (**)			
		Number of Projects	GEF Grant Amount Committed	Project level Co-financing in Cash	Project level Co-financing in Kind	Non-GEF Grant Amount Committed	Total Co-financing
<b>BOTSWANA</b>	1993	187	\$5,338,618	\$8,732,649	\$2,491,039	\$0	\$11,223,688
<b>MALAWI</b>	2009	79	\$2,300,000	\$1,355,243	\$1,141,212	\$280,000	\$2,776,456
<b>MOZAMBIQUE</b>	2005	273	\$5,408,792	\$1,932,640	\$1,898,342	\$0	\$3,830,982
<b>NAMIBIA</b>	2003	136	\$3,204,943	\$4,393,867	\$2,271,457	\$1,997,254	\$8,662,579
<b>ZAMBIA</b>	2008	67	\$2,312,750	\$935,544	\$453,309	\$540,000	\$1,928,852
<b>SOUTH AFRICA</b>	2003	119	\$5,103,422	\$6,990,652	\$2,067,306	\$0	\$9,057,958

**SOURCE:** SGP Database, August, 2019 (\*) The criteria for the start year of the country is in synchrony with that used by GEF Independent Evaluation Office (i.e. year grant making started)

# Illustrative Results of Participating Countries

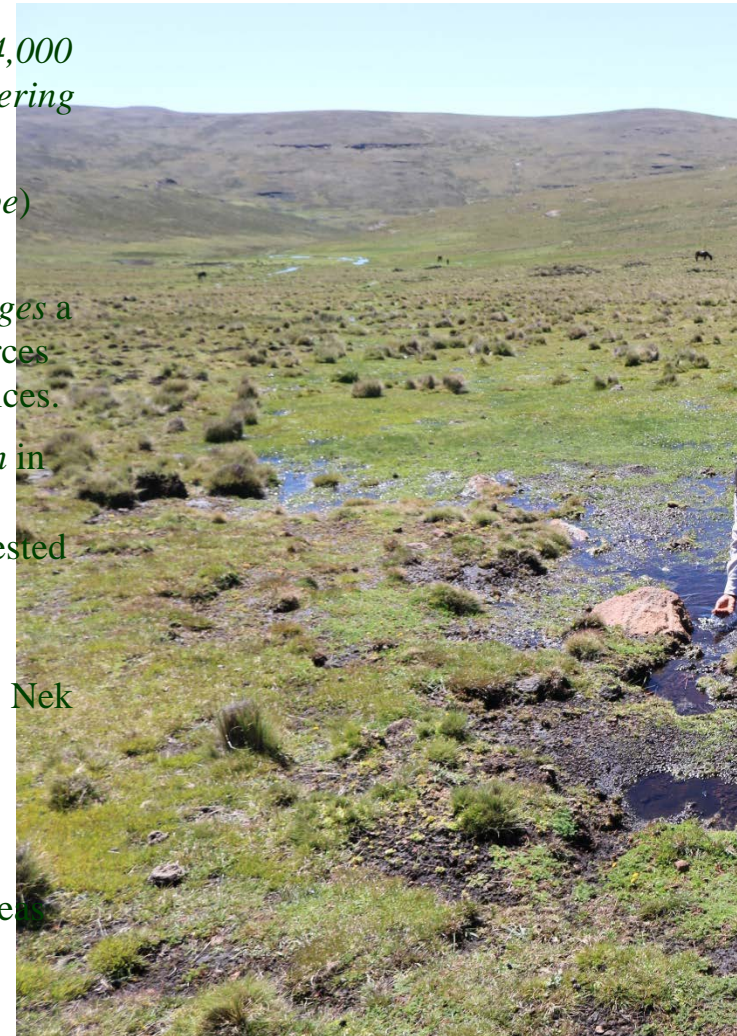
---

# Lesotho: Results Achieved in OP 6

## Senqu river Basin is the Priority Landscape for OP 6 and OP 7

### 1. Environmental Protection

- ❑ 6 CSOs in Mokhotlong District cleared invasive shrubs from more than 4,000 hectares of rangeland with the water retaining capacity of wetlands covering more than 10 ha improved.
- ❑ Wildlife (*bush bucks*) spotted in community conserved areas (*Malubalube*) where they have not been seen in a long time.
- ❑ More than 3,500 livestock farmers (*men & women*) in more than 13 villages in Qacha's Nek and Mokhotlong equipped with sustainable range resources management skills and are adopting sustainable land management practices.
- ❑ More than 100 herders participating in a *Green-A- Cattle Post Campaign* in Mokhotlong to determine the most compliant group to: agreed range management plans, well protected wetlands and least invasive shrub invested cattle post area among other criteria.
- ❑ At least 9 km of *fire belts* constructed protecting more than 8,000 ha of rangelands and settlements from wild fires at Ha Ramatšelisiso in Qacha's Nek
- ❑ All interventions contributing to the objectives of the *Orange-Senqu Commission (ORASECOM)* a platform of 4 countries including *Lesotho, Botswana, Namibia* and *South Africa*
- ❑ Grantmaking is initiated in the Community Management of Protected Areas Conservation (COMPACT) project at Sehlabathebe National Park, the Lesotho side of the *Maloti Drakensberg Park World Heritage Site*.







## 2. Capacity Development and Social Inclusion

❑ CBOs assisted to develop project proposals through planning grants

- ❑ A *capacity development grant* awarded for mentorship of the 8 small CBOs resulting in improved reporting and project management and delivery; less conflicts within organizations and increased networking among grantees
- ❑ More than 50 CSOs, local farmers and local authorities participated in dialogues with policy and decision makers
- ❑ Jointly with the UNESCO National Focal Point, accessed a *capacity development grant* for the Sehlabathebe Community Conservation Forum (CCF). The CCF is now legally registered.
- ❑ More than 100 herders are participating in a “Green-A-Cattle Post” campaign, to highlight role played by herders in sustainable land and water management.
- ❑ More than 3,500 people, majority women, have benefitted from SGP interventions in OP6: through trainings, awareness campaigns, *Matsema*, improved rangelands, livestock prophylaxis resulting in marked reduction in mortality rate of lambs for example, and many other initiatives.
- ❑ In recognition of great effort in land rehabilitation, 10 farmers, (6 women & 4 men) in Malubalube and Popa in Mokhotlong district, received rams for improvement of wool/mohair quality and general livestock improvement.
- ❑ Lesotho is one of the 10 countries selected to participate in the Women-led “Green” enterprises – an initiative meant to scale-up beekeeping and wool and mohair industries, led and run by Basotho Women.



# South Africa: Examples of Successful Projects

## Enhancing Ecosystems Services delivery through land restoration and livelihood improvement

**Goal:** To introduce a sustainable farming model which creates an economic and ecological model for Mafube Livestock Association in the Umzimvubu Upper Catchment area

**Main Activities:** Training livestock farmers on regenerative grazing techniques, alien plant clearing & rangeland restoration practices, fire management, cattle management, organizing livestock marketing through mobile auctions and abattoirs to provide farmers with opportunity to reach new markets.

**Key Results:** 80 hectares of land cleared from wattle infestation; stone packing & teff grass planted in gullies to prevent soil erosion; grazing management plans developed & implemented for Association; approx. 50 households generated an income of ZAR583,000 through mobile auctions, project replicated



## Solar water heater (SWH) installation and training project

**Goal:** To support training of young unemployed youth on solar installation maintenance as part of govt's drive to support 'green jobs'

**Main Activities:** Theoretical & practical accredited training on solar installation; installation of solar heaters on low-income households; youth work-placements

**Key Results:** 21 youth trained (11 women, 9 men) in partnership with govt & private developer; 20 low income houses installed with SWH by trained youth; 8 youth placed in govt and private companies for work placements; 3 established own plumbing enterprises for installation and maintenance of SWH



## Food Sovereignty through agro-ecological production

**Goal:** To capacitate small-scale farmers in Eastern Cape & KwaZulu Natal to implement agro-ecological methods of production

**Main activities:** training through peer to peer exchange by farmers, research & publication on AE best practices, policy dialogues on AE, expand CSO platform on AE; establish h/h seed banks

**Results:** AE publication developed; over 200 farmers trained on AE- 90% women; improved household food security & knowledge of seed varieties; over 1000 submissions/inputs made by farmers on Seed Bills; over 40 household seed banks established



# South Africa

## Country Level Impacts

### **GEF SGP projects supported , documented and influenced:**

1. Expansion of protected areas through biodiversity stewardship & community conservation with over 730 000 hectares influenced since 2001
2. Improved knowledge of environmental issues, recognition of indigenous knowledge and rights has contributed to community their inputs into key policy & legislative documents such as Climate Change Strategy, Waste Act, Parliamentary inputs on the Plant Improvement and Plant Breeder's Right Bills & Anti-fracking
3. SGP funding has helped leverage/unlock additional funding support and partnership from government, foundations and private sector.
4. Training & skills development support of youth in KwaZulu Natal and Western Cape has contributed youth employability- key priority for national government

### **At local level:**

Support for CBOs vs NGO has improved with landscape approach in Limpopo. Approach has allowed for improved peer to peer knowledge exchange, improved partnership with provincial authorities and local university

Gender mainstreaming has contributed to empowerment of women in managing projects and improving their income generating capacity in the priority landscape and reduced reliance of CBOs to external consultancy support

Facilitating south-south exchange on agro-ecology and holistic rangeland management for small-scale farmers to share knowledge and lessons

# Mozambique Overview

- Creation of global environmental benefits
- Preserve environmental significant areas while reducing vulnerability of marginal groups
- Promote innovative solutions of development targeting social inclusion
- Contribute to SDGs and MEAs through adoption
- Contribute to national agendas and develop partnerships



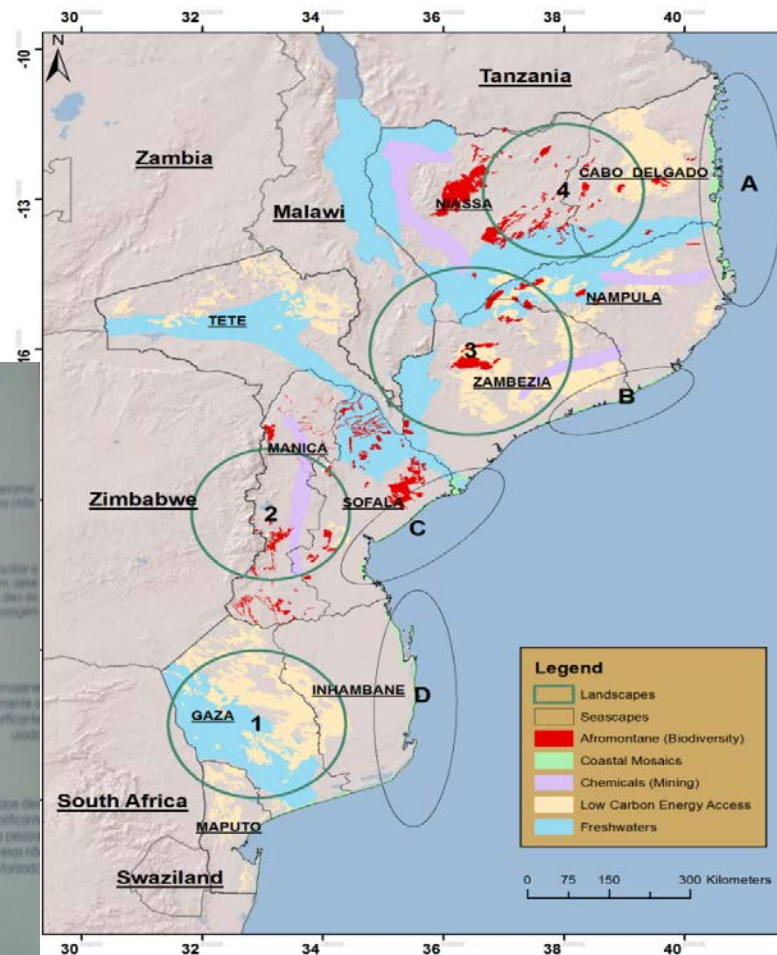
al resources





# Portfolio

- Geographic coverage
  - Terrestrial habitats
  - Coastal-marine habitats
  - Freshwater habitats



GUÊO SOBRE A UTILIZAÇÃO E GESTÃO DE ÓLEOS LUBRIFICANTES USADOS E CONTAMINADOS



## Strategic directions

- Develop local solutions of environmental sustainability
- Strengthen the alignment with SGP with UNDP and MITADER
- Integrate new strategic initiatives (circular economy, urban solutions, blue economy, management of plastics, etc)
- Create new political approaches, south-south cooperation, knowledge management, etc.





## Strategic directions - cont.

- Increase focus on gender issues, equity, women, youth and children empowerment, and people with disabilities
- Engage private sector
- Develop partnerships for resource mobilization
- Increase SGP visibility



Thank you



## Zambia: Results Achieved in OP 6

*OP6 prioritised projects with benefits in the environmental sustainability of the Zambezi landscape and the local communities with a focus on how sustainable utilization of natural resources would improve their livelihoods.*

### **1. Environmental Protection**

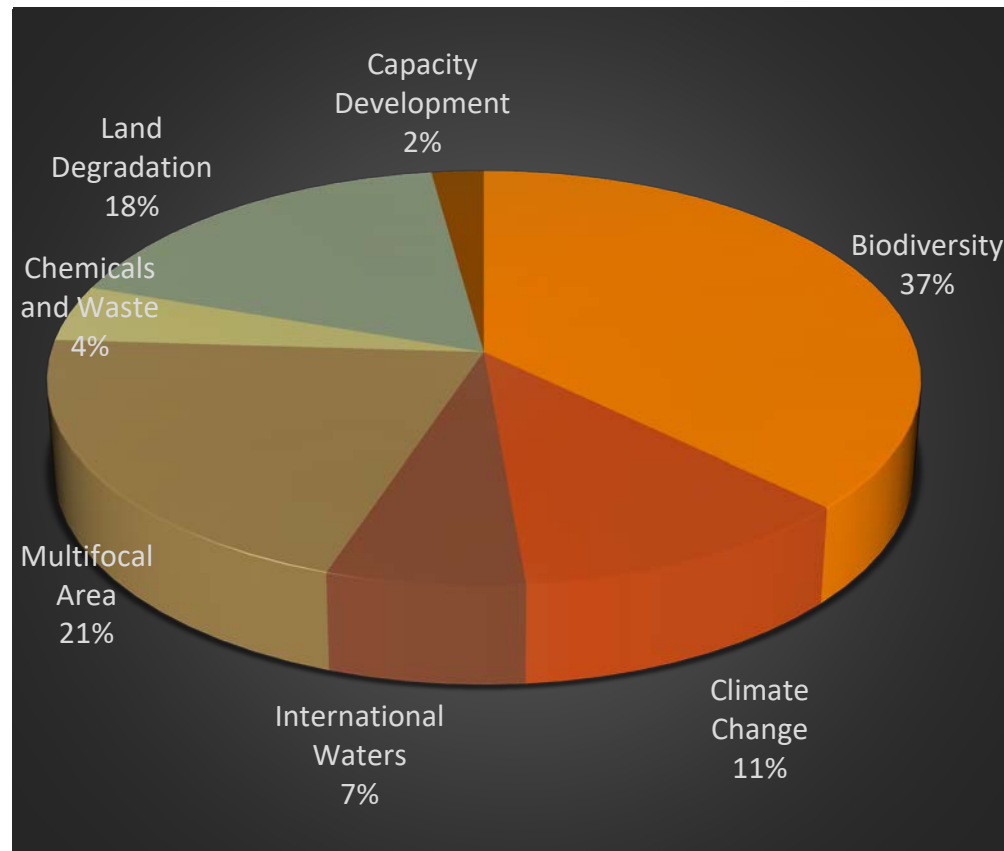
- Over 5,000 Moringa tree seedlings procured and planted benefiting 500 farmers trained in growing, maintenance, processing and marketing of the Moringa trees contributing reduction in land degradation and malnutrition.
- At least 2 Ponds/pluvial gardens constructed benefitting 2 communities comprised of 200 households in Chongwe District trained in organic vegetable production and pluvial garden principles in Kasisi; contributing to poverty reduction through use of water harvesting techniques for improved garden crop production.
- Over 2000 assorted tree seedlings so far planted by 210 farmers (81 females and 110 males), following training in forest regeneration and food gardening contributing to sustainable land management and reducing poverty and food insecurity in Chadiza district
- At least 1,000 goats distributed to over 300 farmer beneficiaries through a pass-on-mechanism as alternative livelihood to improve the lives of the local people and reduce pressure and dependence on the natural resources in North Western and Southern Provinces.
- At least 26 boreholes successfully sunk to address water challenges for both man and livestock in different areas including Dundumwezi and Namaanza providing for vegetable production, horticulture, replenishing of the fish ponds with fresh water in 5 fish ponds stocked with 5,318 fingerlings; contributing to improvement of livelihoods, sanitation and health and poverty reduction of over 200 households trained in vegetable gardening and integrated fish farming.
- More than 72,000 pineapple suckers procured and planted for Chimwenu and Mukangala farmers in phase one benefitting 172 farmers trained in pineapple growing in Mwinilunga to improve their livelihoods and foster sustainable management of natural resources around the Zambezi River source catchment area through assisted natural regeneration and conservation farming.

## 2. Capacity Development and Social Inclusion

---

- 16 CBOs supported through training in administrative procedures and financial management leading to effective implementation, delivery and results/ impacts based reporting on the various projects.
  - Over 20 local community members trained in operation and maintenance of the boreholes to ensure sustainability and continuous water supply to the local communities along the Zambezi catchment .
  - Over 4,500 people received capacity building training through the OP 6, in goat production and management, vegetable production, forest regeneration, integrated livestock management and climate smart agriculture among others with the support of cooperating partners including the Ministries of Livestock, Agriculture and Lands and Natural Resources to enhance the local community livelihoods and promote sustainable natural resources management.
-

# Botswana: Country Programme Portfolio



Start Up Date	1992
Total Number of Projects	184
Grant Amount (USD)	5,388,617.69
In Cash Co-Financing (USD)	8,732,648.96
In Kind Co-Financing	2,526,038.87

# Example of Successful Projects

**Project 1:** Climate Variability and Change Risk Assessment and Management: Development of Decision Support Systems for Dry Land Small Scale Farmers in Barolong and Kgalagadi South Sub-Districts.

**Goal:** To build diversified and resilient livelihoods for dryland farmers in the Southern and Kgalagadi South Districts through effective management of land and water resources.

**Main Activities:** Climate Capacity and Vulnerability Assessment; training of agricultural managers and extension Officers; training of Small holder farmers in climate adaptation, and agronomic practices; training of women in food preparation, processing and preservation; farmer to farmer social learning exchanges; Input procurement and distribution; Infield demonstrations of Climate Smart Agriculture (CSA) practices.

**Key Results:** A total of 40 smallholder farmers and 40 district agricultures managers and extension officers from Barolong and Kgalgadi South Sub-Districts were trained, livelihoods for



# Examples of Successful Projects Cont'

**Project I:** Installation of Tanks for Storage Waste oil at Serowe, Francistown and Kasane.

**Goal:** To mitigate against mismanagement of used oil with potential to harm human beings and affect the environment negatively.

**Main Activities:** Mobilisation of stakeholders for successful implementation of the project, construction of 2 x 10,000 liters of waste oil tanks, installation of a suction pumps, stakeholder engagement workshops at Serowe, Francistown and Kasane.

**Key Results:** Local communities sensitised on proper handling, disposal, management of waste oil; opportunities presented by used oil explored; environmental pollution reduced through proper disposal of used oil; public health safeguarded.



## THANK YOU

### Contacts:

Yoko Watanabe, Global Manager ([yoko.watanabe@undp.org](mailto:yoko.watanabe@undp.org))

Charles Nyandiga, Regional Focal Point ([Charles.Nyandiga@undp.org](mailto:Charles.Nyandiga@undp.org))

National Coordinators ([www.sgp.undp.org/where-we-work-153.html](http://www.sgp.undp.org/where-we-work-153.html))

---